



Madison Avenue Location in Prime Midtown Office Building

270 Madison Avenue, NYC Northwest Corner of East 39th Street

Available

Suite 301:

7,036 rsf

- Perfect for accountants, attorneys or most service firms
- September 1, 2019 possession

Rent

Upon Request

Partial 12th Fl:

5,718 rsf

- Summer/Fall 2019 Possession

\$63 psf (with building standard work)

Partial 15th Fl:

1,350 rsf

- August 1, 2019 possession

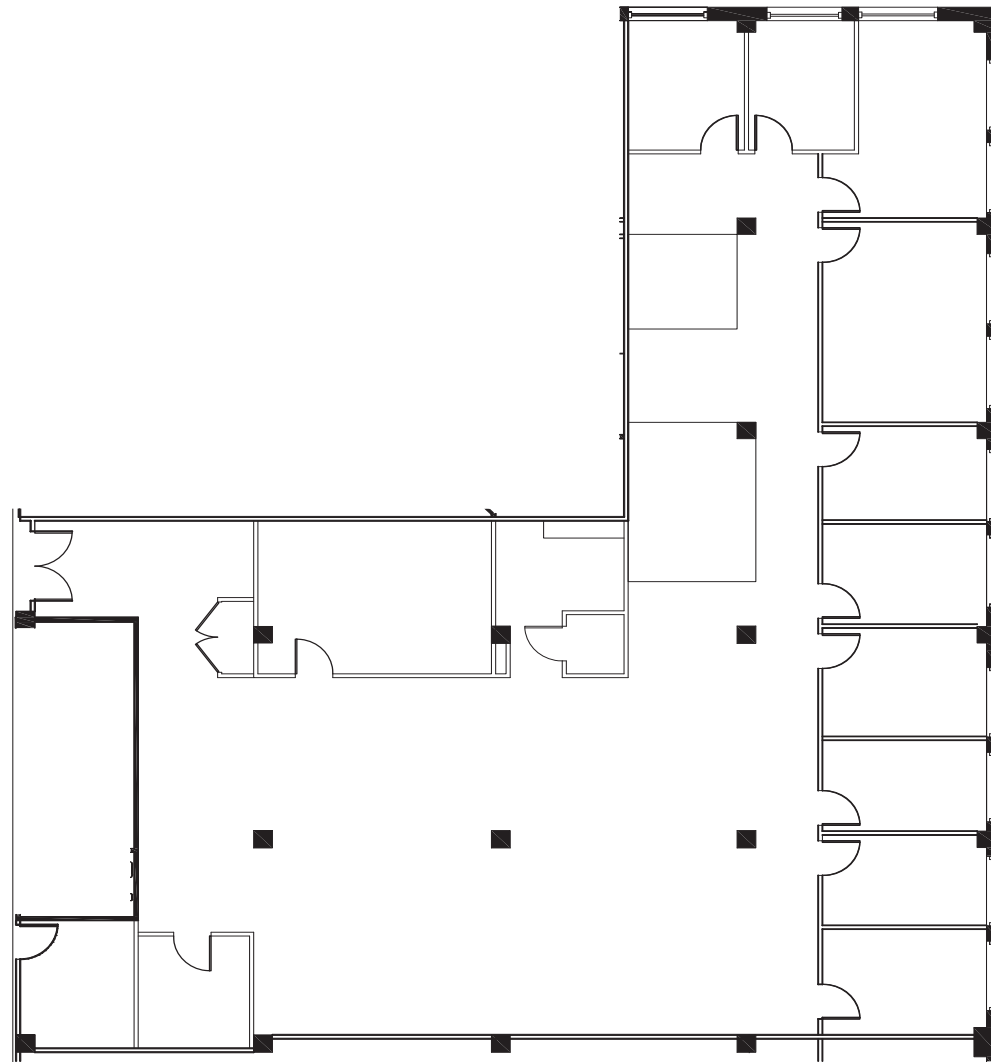
Upon Request

Comments:

- Building features new multi-million dollar lobby renovation underway
- Steps to Grand Central Terminal, Bryant Park and Penn Station
- 24/7 Access with attended lobby
- Nearby transportation **4 5 6 N Q R S W 7**

270 MADISON AVENUE

SUITE 301 - 7,036 RSF















A

BNA LRP

BANKERS BOX

Daily's Steel
1990 - 1993

BANKERS BOX

Daily's
1988 - 1989

BANKERS BOX

AA

GARY Event
(Reception Area)

BANKERS BOX

L

L

CRA

































