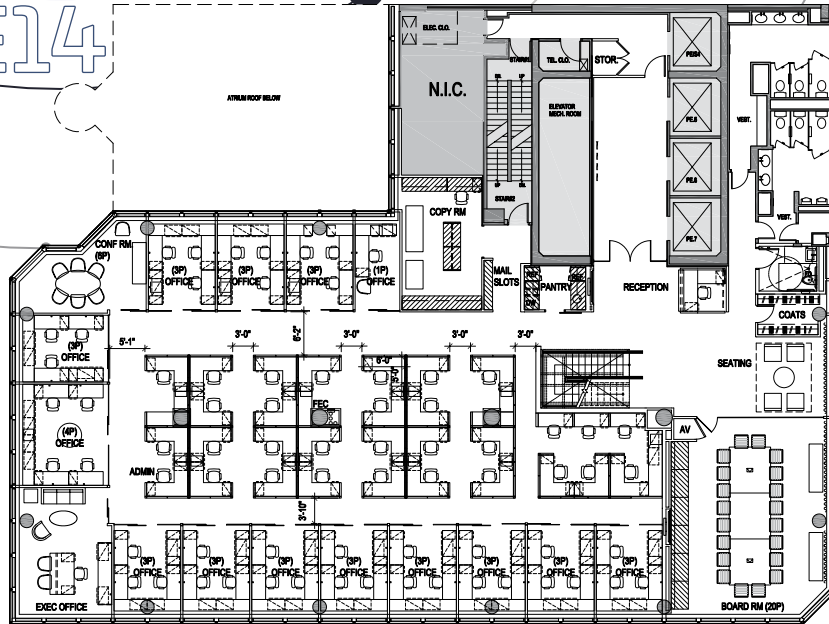


499 PARK AVENUE

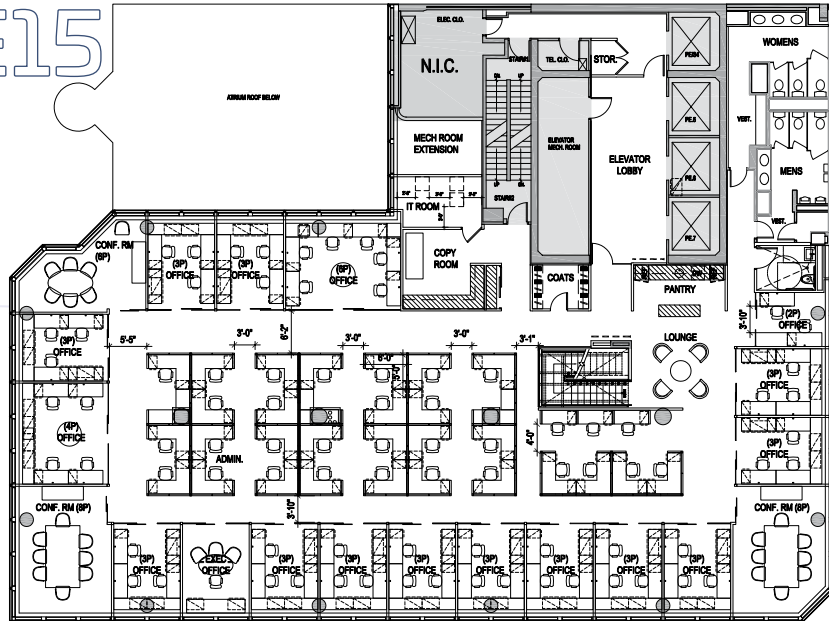
PRIME SPACE FOR SUBLEASE

**High-End Installation, Furnished, Wired and
Ready for Immediate Occupancy**

E14



E15



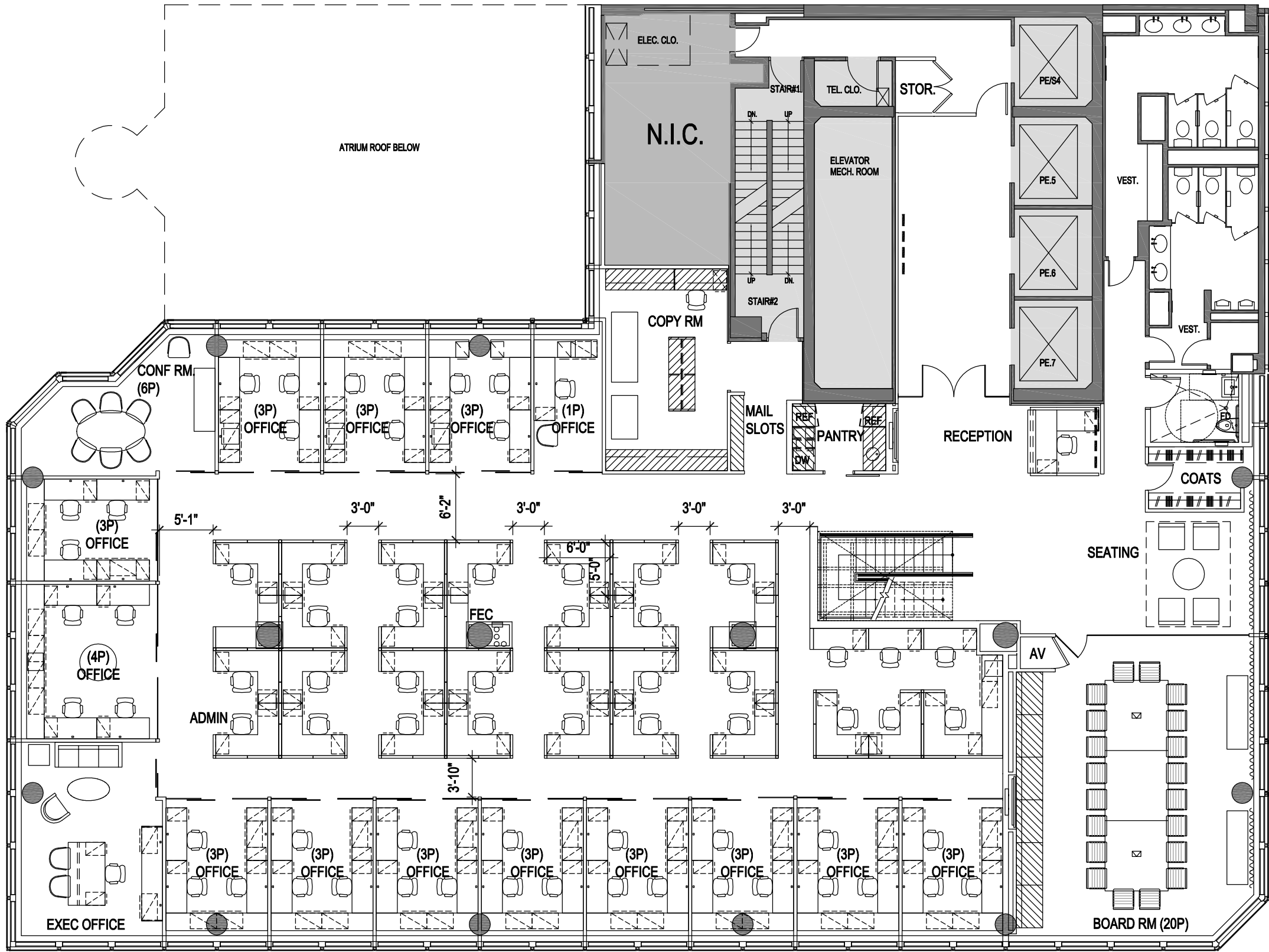
ENTIRE 14TH FLOOR 11,294 RSF
 ENTIRE 15TH FLOOR 11,294 RSF
 TOTAL 22,588 RSF

Floors must be leased together

Available Immediate

Term thru 6/30/2026

- Two full floors with an interconnecting staircase
- Light filled space with views of Park Avenue.
- Fully wired, plug & play floors with furniture available.



| SPACE TYPE (14TH FLR) | QTY |
|-------------------------|-----|
| EXEC OFFICE (DIANE- 1P) | 1 |
| PR OFFICE (1P) | 1 |
| OFFICES (TEAM- 3P) | 12 |
| OFFICES (TEAM- 4P) | 1 |
| TOTAL OFFICES | 15 |
| TOTAL PEOPLE IN OFFICES | 42 |
| WORKSTATIONS (5' X 6') | 27 |
| BENCH (VIRTUAL AGENTS) | 3 |
| ADMIN. ASSISTANT | 1 |
| RECEPTIONIST | 1 |

| | |
|---------------------------|-----|
| TOTAL 14TH FLOOR: | 74 |
| TOTAL 14TH & 15TH FLOORS: | 158 |

--- SIGNAGE

6,756 SF (15TH FLOOR APPROX. PLANNABLE)

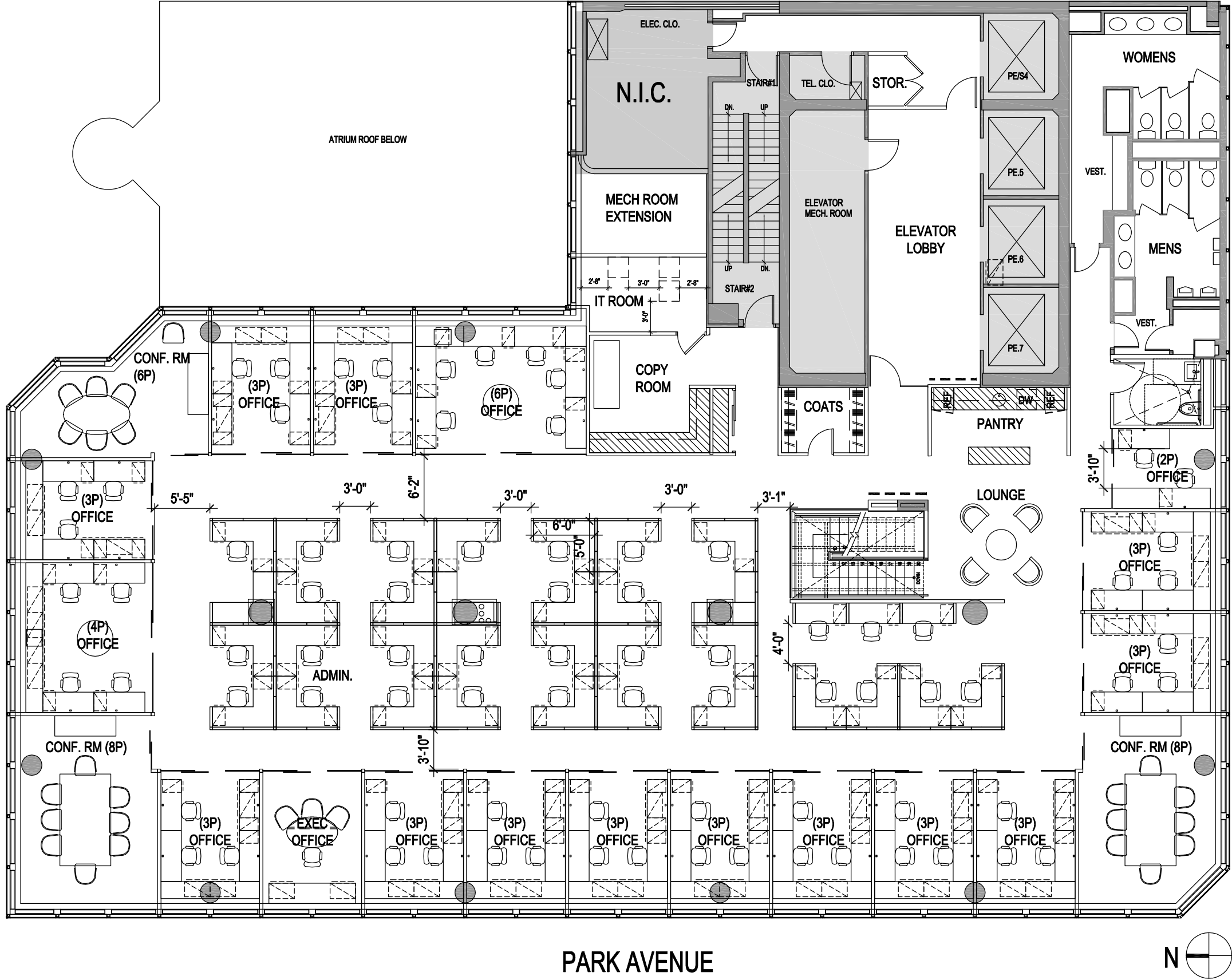
NOT IN SCOPE

| AMENITIES (15TH FLR) | QTY |
|----------------------|-----|
| RECEPTION | 1 |
| RECEPTION SEATING | 1 |
| BOARD RM. (20P) | 1 |
| CONF RM. (6P) | 1 |
| CONF. RMS | 2 |
| CONF. SEATS | 26 |

| SUPPORT (15TH FLR) | QTY |
|--------------------|-----|
| COPY | 1 |
| COATS | 1 |
| STORAGE | 1 |
| MAIL SLOTS | 1 |

PARK AVENUE





| SPACE TYPE (14TH FLR) | QTY |
|-------------------------|-----|
| EXEC OFFICE (JOHN- 1P) | 1 |
| OFFICES (TEAM- 2P) | 1 |
| OFFICES (TEAM- 3P) | 13 |
| OFFICES (TEAM- 4P) | 1 |
| OFFICES (TEAM- 6P) | 1 |
| TOTAL OFFICES | 17 |
| TOTAL PEOPLE IN OFFICES | 46 |
| WORKSTATIONS (5' X 6') | 28 |
| ADMIN. ASSISTANT | 1 |
| BENCH STATIONS | 3 |

TOTAL 15TH FLOOR: 84
TOTAL 14TH (73 P) & 15TH FLOORS: 158

----- SIGNAGE
6,756 SF (15TH FLOOR APPROX. PLANNABLE)

NOT IN SCOPE

| AMENITIES (15TH FLR) | QTY |
|----------------------|-----|
| PANTRY | 1 |
| LOUNGE AREA | 1 |
| CONF RM. (8P) | 2 |
| CONF RM. (6P) | 1 |
| CONF. RMS | 3 |
| CONF. SEATS | 22 |

| SUPPORT (15TH FLR) | QTY |
|--------------------|-----|
| COPY | 1 |
| COATS | 1 |
| STORAGE | 1 |
| IT ROOM | 1 |







499 PARK AVENUE