

RARE FULL FLOOR (DIVISIBLE) TROPHY SUBLEASE AVAILABLE

Southwest corner of Madison Avenue and 53rd Street



Space Profile

Size: **11,500 SF** (currently divided into units;
Unit A: 6,903 rsf & Unit B: 4,597 rsf)

Floor(s): **Entire 18th**

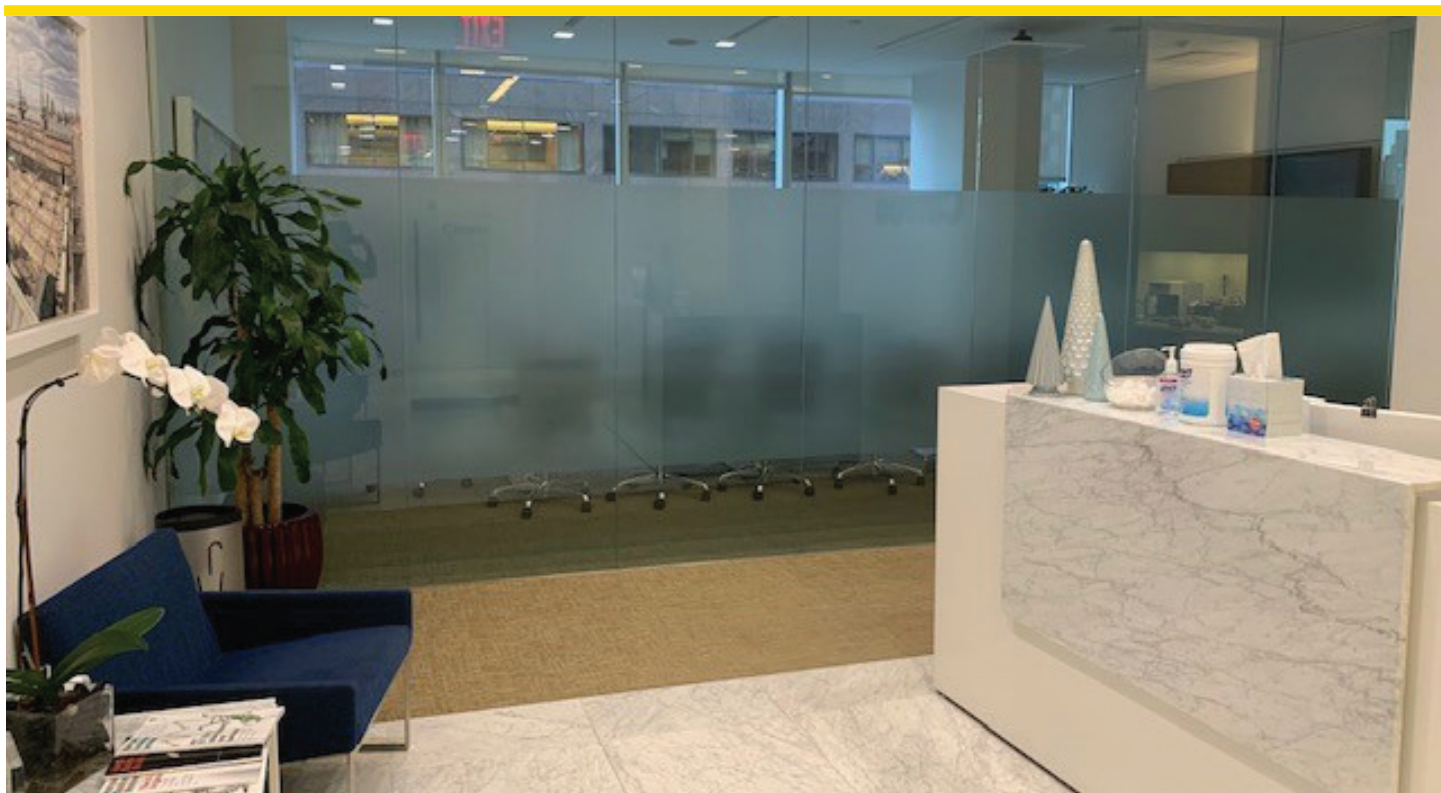
Rate: **Upon request**

Availability: **January 1, 2021**

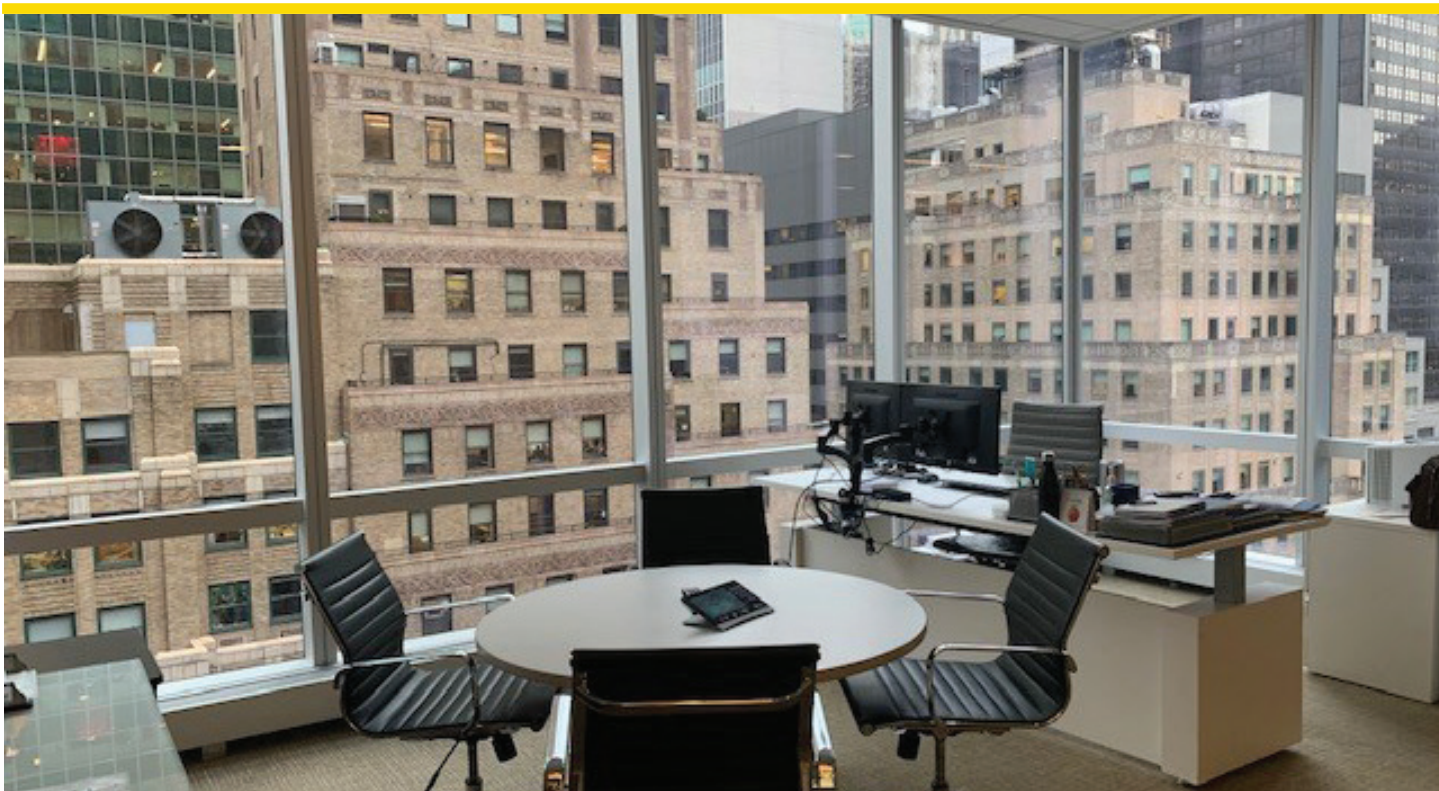
Term: **Sublease through 7/2024**

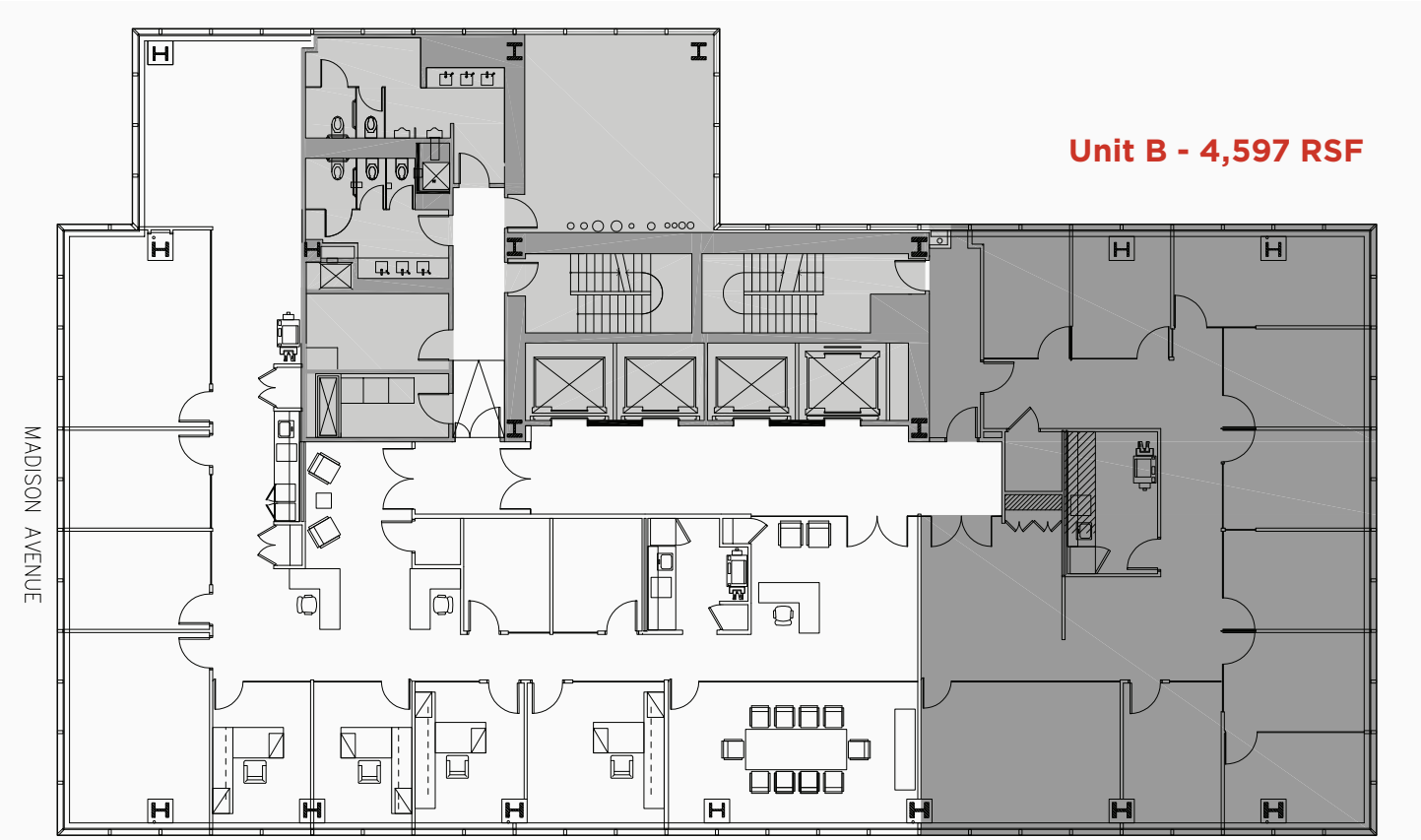
Key Highlights

- High-end recently pre-built units contain a mix of glass-fronted perimeter offices, conference rooms and interior support areas
- Institutional-quality sublandlord
- Floors feature 10' finished ceiling heights
- Property features access to private rooftop and fitness / pool facilities



SUBLEASE 510 Madison Avenue, New York, NY 10022 | Plaza District





Unit A - 6,903 RSF

Unit B - 4,597 RSF