

TWO 12K SF TOWER FLOORS/BUILT PRIVATE EQUITY/ LAW FIRM INSTALLATION IN GRAND CENTRAL

Delivered Fully Furnished & Wired



Space Profile

Space: **Entire 49th: 12,431 SF**
Entire 50th: 12,323 SF
Total of the premises: 24,754 SF

Rate: **Upon request**

Availability: **Immediate**

Term: **September 30, 2021**

Key Highlights

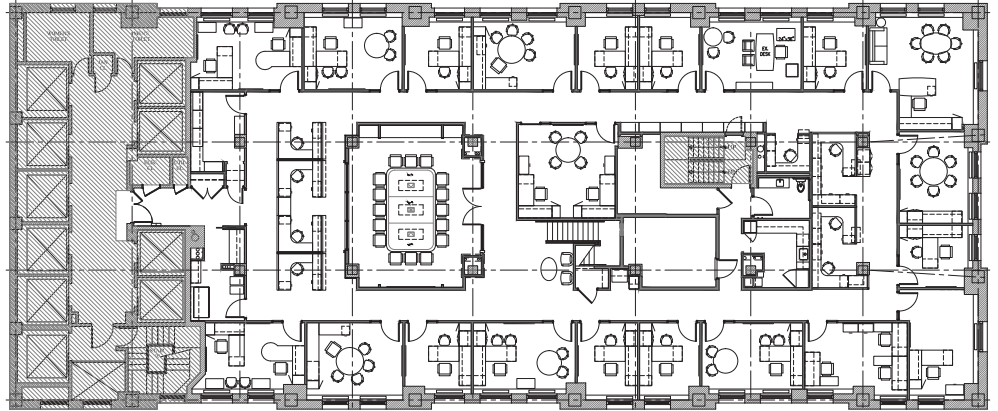
- Move in condition office intensive installation.
- Expansive Midtown views.
- Existing internal staircase between the 49th & 50th floors.
- Newly renovated office intensive installation is fully plug-and-play - fully furnished and wired.
- Single floor sublease possible.
- Two private men and women's restrooms per floor. Exclusive to subtenant.

SUBLEASE 60 East 42nd Street - Grand Central

Space Overview - 49th fl.

[Click for Virtual Tour](#)

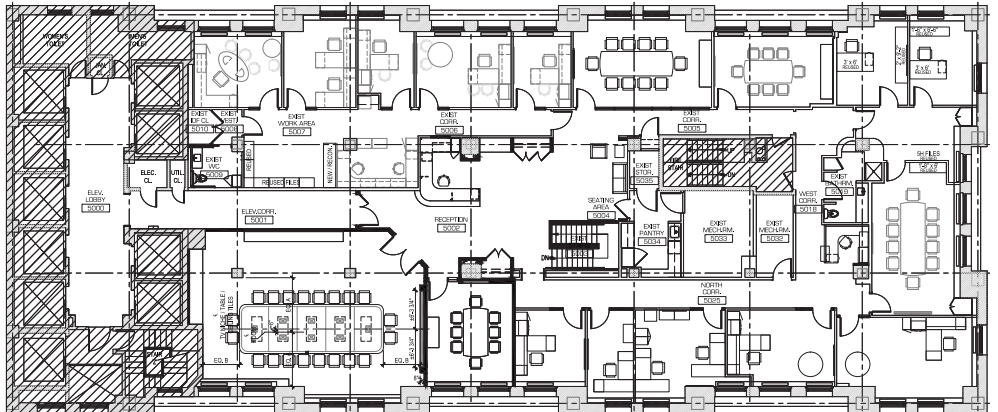
- 19** offices
- 2** conference rooms
- 7** workstations



Space Overview - 50th fl.

[Click for Virtual Tour](#)

- 12** offices
- 4** conference rooms
- 1** boardroom
- 2** workstations



SUBLEASE 60 East 42nd Street - Grand Central

