

200 PARK AVENUE

PRIME SUBLEASE SPACE
Partial **58th** Floor - **13,764** RSF



EAST VIEW



NORTH VIEW



PREMISES

Asking Rent
Possession

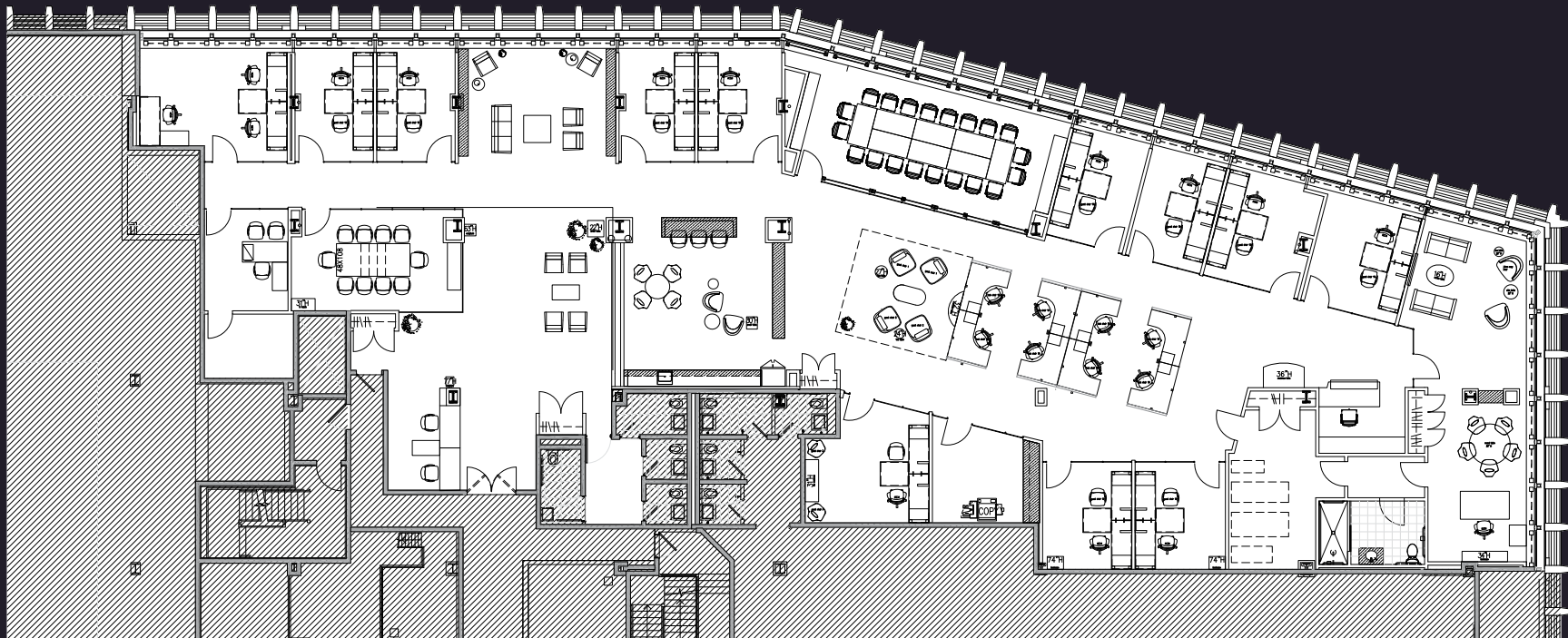
Upon Request
Immediate

Term

Through May 31, 2031
(Will consider shorter term)

COMMENTS

- Ultra high-end installation: mix of offices & open area
- High ceilings
- Spectacular views –North & East exposures
- Unrivalled access to Grand Central Terminal
- Top floor of the building
- Enjoy a contemporary workspace with convenient on-site amenities that include restaurants, shops, child care, banking services, a fitness center and four-level parking garage
- Private Gym on-site
- Reasonable divisions considered





EAST VIEW

200 PARK AVENUE