



For Sublease

Floor: Partial 28th Floor
Size: 14,169 RSF
Possession: Immediate
Term: Through December 2024

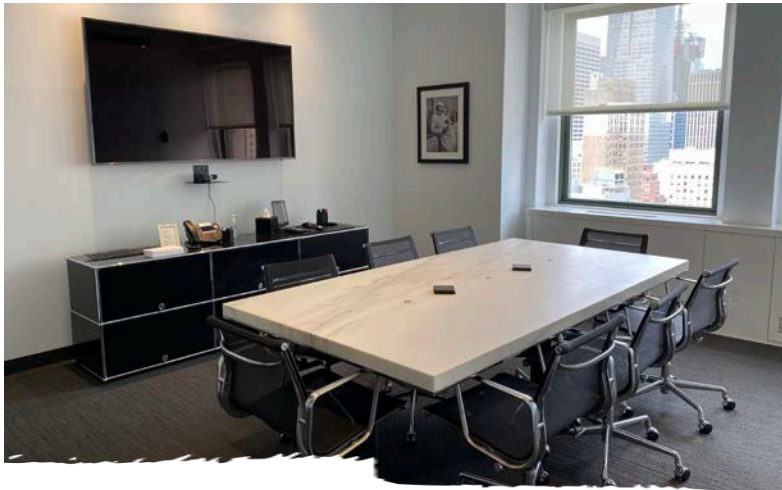
230 Park Avenue
(Between 45th & 46th Streets)

- Built and fully furnished sublease featuring:
 - 18-person boardroom
 - 2 smaller conference rooms (8 people and 10 people)
 - Large corner CEO office and 11 additional private windowed offices
 - 3 interior private offices
 - 11 cubicles
 - 8 trading positions
- High-end installation with exposed ceilings and full glass fronted offices
- Distinct millwork features in corner conference room
- Incredible views looking North directly up Park Avenue
- Entire northside of the floor with prominent elevator presence
- Direct access to Grand Central Terminal

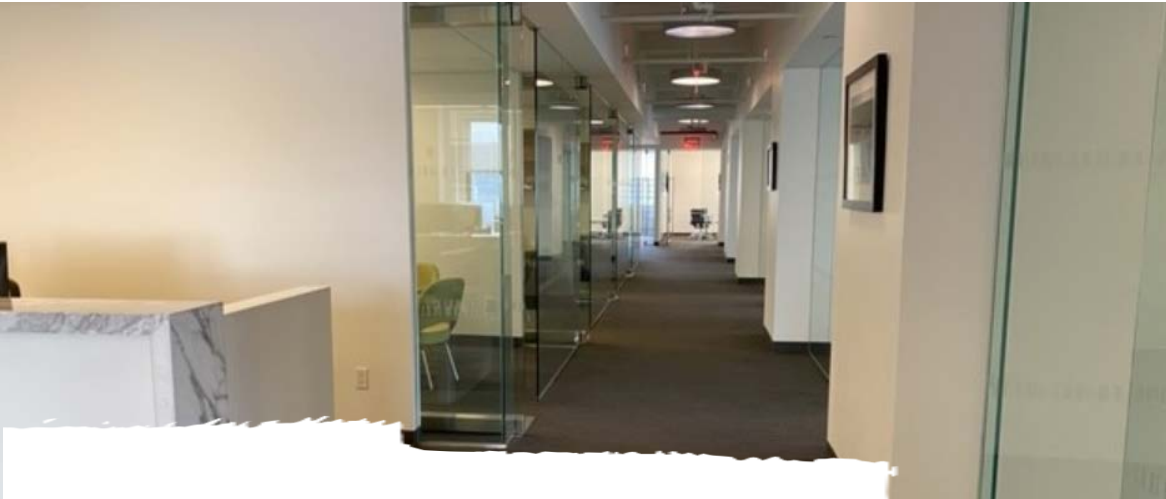
Photos



Photos



Photos



Floorplan

Partial 28th Floor: 14,169 RSF

North up Park Avenue

