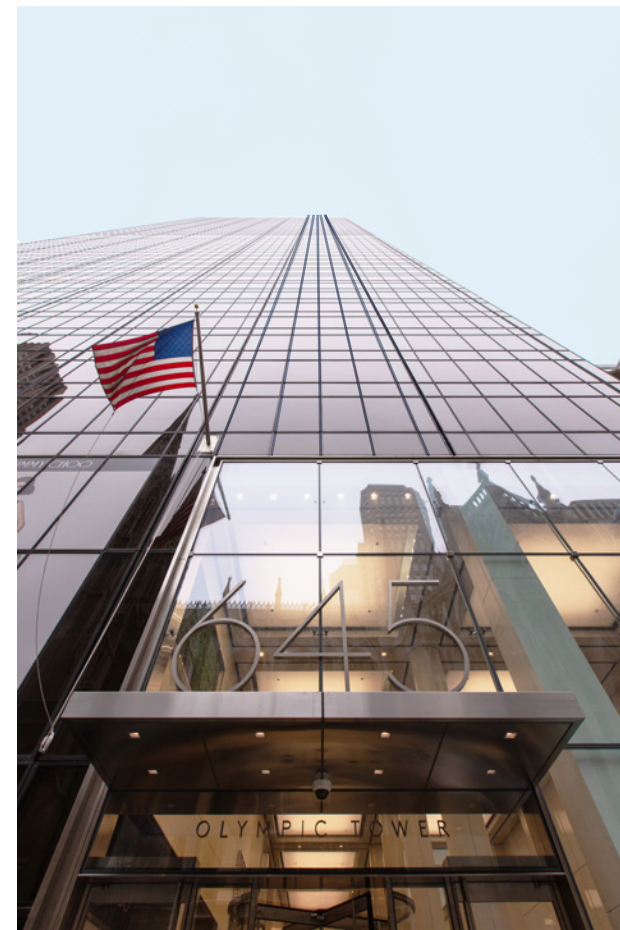


# OLYMPIC TOWER

## THE PIONEER OF EXCELLENCE

Rare Office Sublease Availability In Fifth Avenue's Iconic Tower

645 FIFTH AVENUE | NORTHEAST CORNER OF 51ST STREET



# Premises – PARTIAL 6TH FLOOR: 16,779 RSF

# Space Comments

## Possession

April 2021

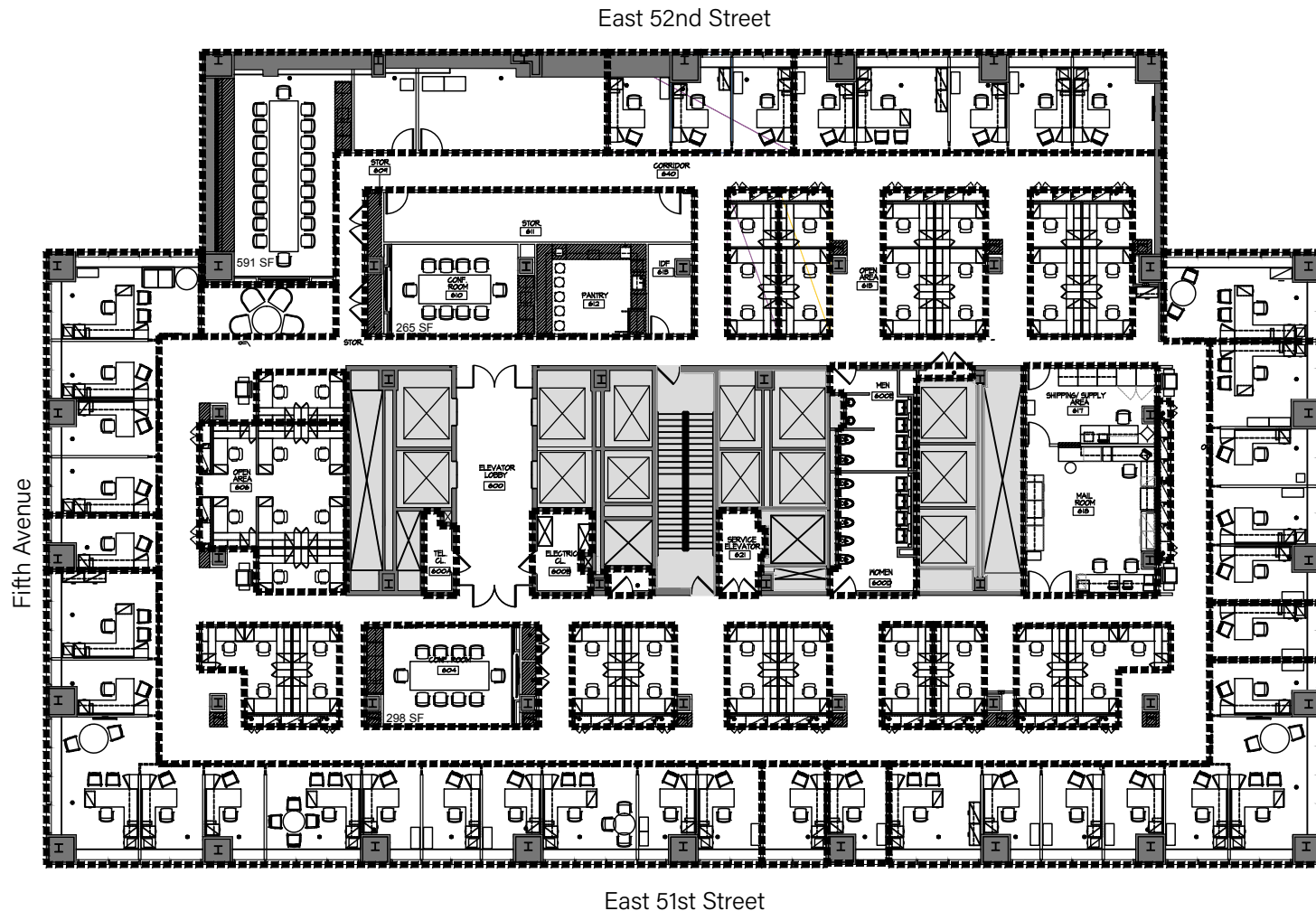
## Price

Upon Request

## Term

Up to three years

- Fully built, high-end sublease with 41 offices, 3 conference rooms and 50 cubicles
- Rare “plug & play” opportunity at Olympic Tower
- Furniture can be made available







---

## *Interior Suite Photos*

---







## *Building Comments*

- Breathtaking views of the adjacent St. Patrick's Cathedral and Rockefeller Center
- Recent \$30MM refurbishment of the building's interior public atrium which now hosts Cipriani's Grano Café and Juice Bar
- Situated along one of the most prestigious retail corridors in the world



