

# AGGRESSIVELY PRICED TURNKEY TAMI SPACE

Excellent Condition / Built in 2018



## Space Profile

Size: **19,517 SF**

Floor(s): **Partial 10th**

Rate: **Negotiable**

Availability: **Immediate**

Term: **November 29, 2027**

## Key Highlights

- Highly efficient, recently built (2018), furnished and wired space
- All workstations separated by glass partitions
- Class A building undergoing building wide renovation; new lobby to open Q2 2021
- Exceptional building ownership and management
- Direct underground access to Penn Station, A/C/E, and 1/2/3 subways



**SUBLEASE** 1 Penn Plaza, New York, NY 10119



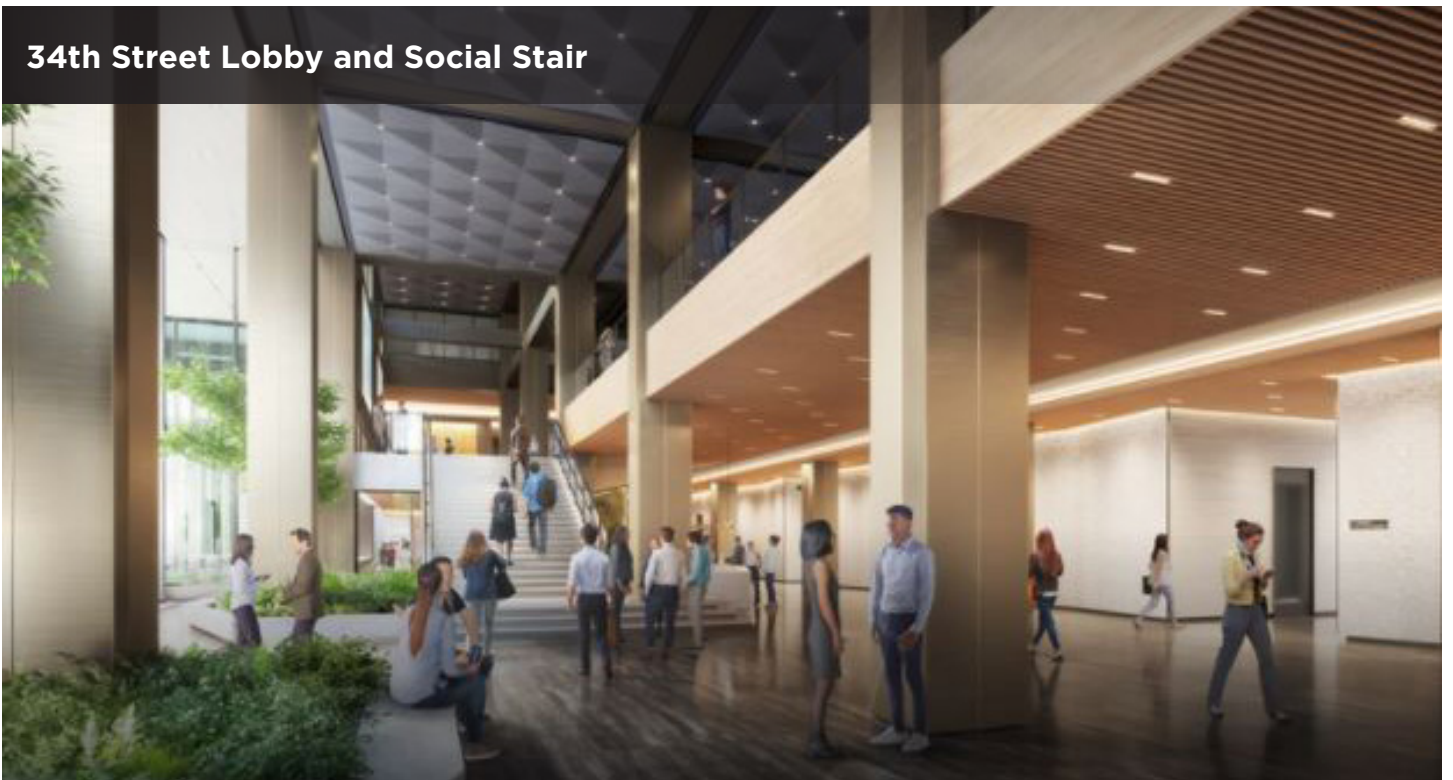


**SUBLEASE** 1 Penn Plaza, New York, NY 10119

**Entrance and Plaza**



**34th Street Lobby and Social Stair**



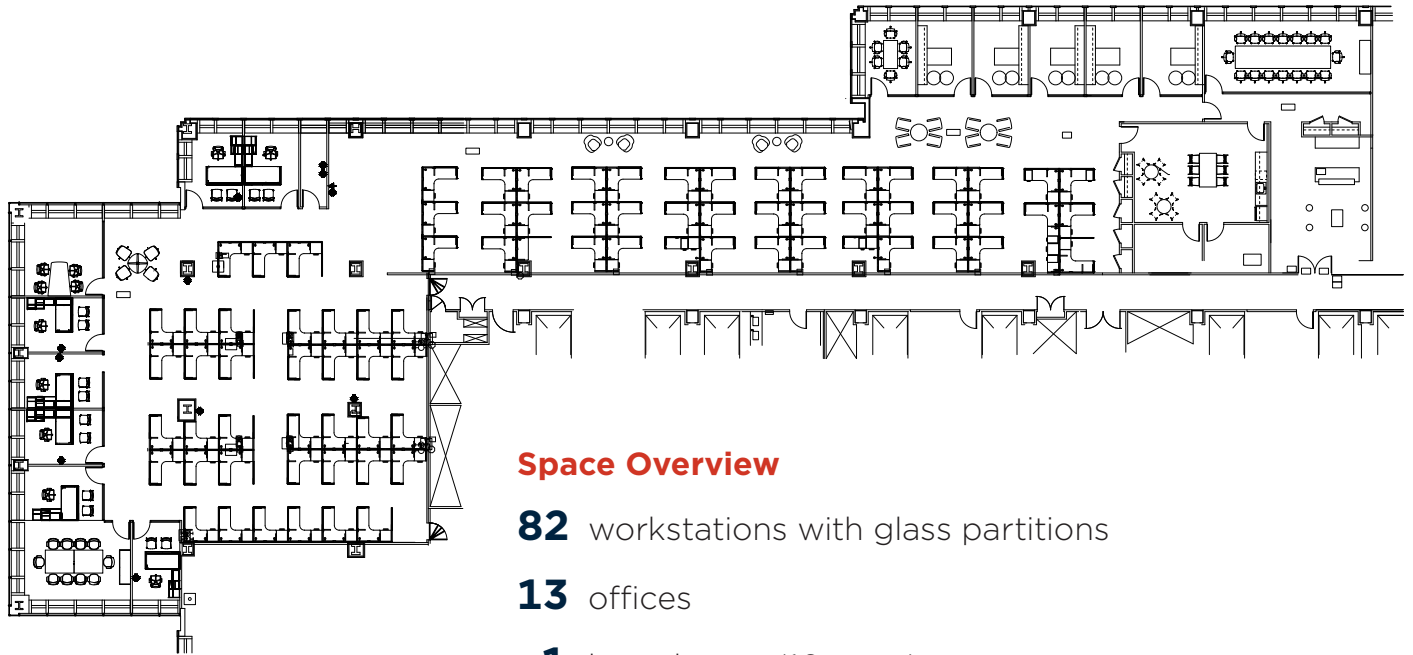
**North Lobby**



**Social Stair**







### Space Overview

**82** workstations with glass partitions

**13** offices

**1** boardroom (16 seats)

**2** conference/meeting rooms

