

OFFICE SPACE FOR SUBLEASE

# 2 GRAND CENTRAL TOWER

BETWEEN LEXINGTON AND THIRD AVENUES



## SPACE

Partial 20th Floor

## AREA

2,495 SF

## POSSESSION

Immediate

## RENT

Upon Request

## TERM

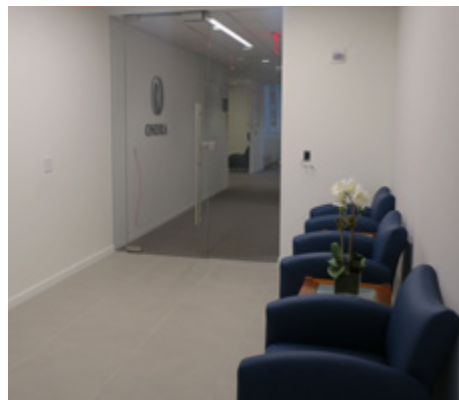
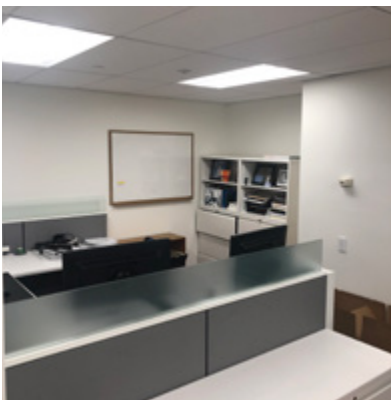
Sublease thru August 2021

## ELECTRIC

\$3.50/SF

## COMMENTS

- Prime Grand Central location
- 1 conference room, open area, reception & high-end pantry



OFFICE SPACE FOR SUBLEASE

# 2 GRAND CENTRAL TOWER

BETWEEN LEXINGTON AND THIRD AVENUES

## PARTIAL 20TH FLOOR

2,495 SF

EAST 44TH STREET

