

# SHORT TERM HIGH-END FINANCIAL SERVICES SUBLEASE

Furnished Plug and Play Sublease @ 489 Fifth Avenue



## Space Profile

Size: **2,711 RSF**

Floor: **Partial 29th**

Rent: **Upon Request**

Possession: **Immediate**

Term: **Through December 30, 2022**

## Key Highlights

- Space features 2 windowed offices, open area with trading desk for 5 (with ability to densify), reception area, open pantry, and 2 conference rooms.
- High-end build out with glass fronted offices.
- Great views of Bryant Park and the Empire State Building.
- Directly off of the elevator.
- Furniture can remain in place.



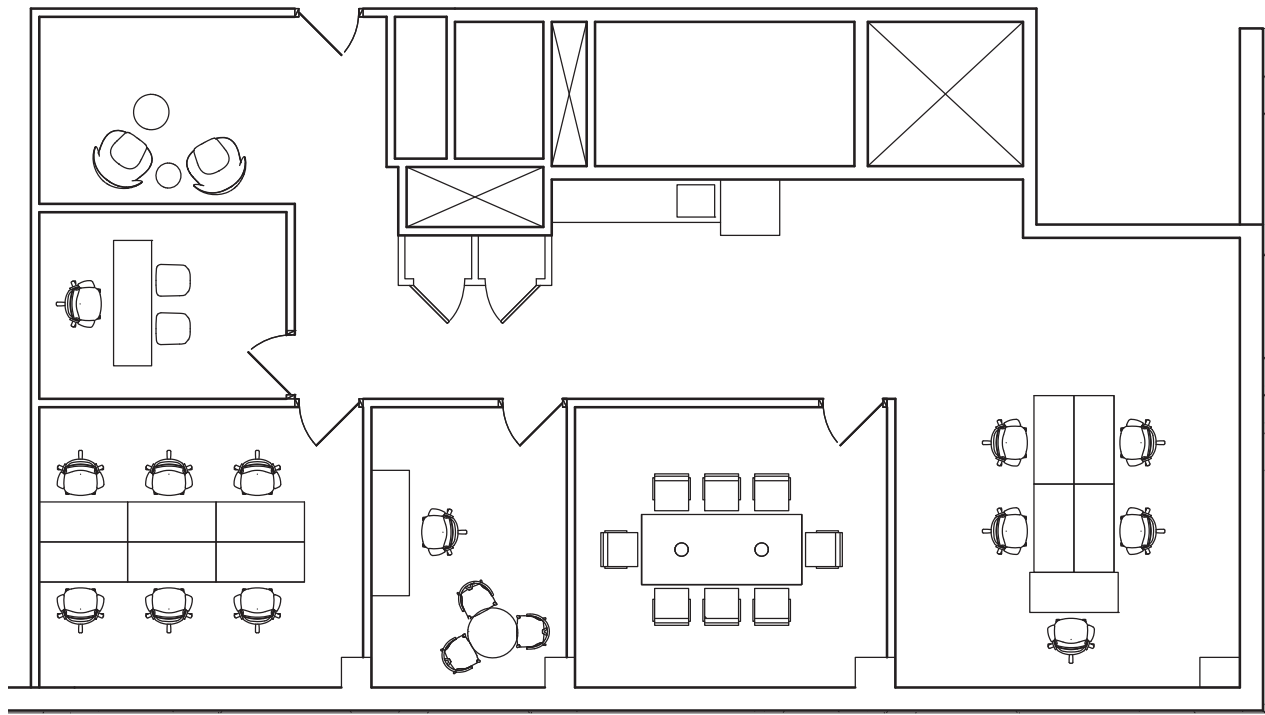
**SUBLEASE** 489 Fifth Avenue | Grand Central Submarket at Bryant Park





**SUBLEASE** 489 Fifth Avenue | Grand Central Submarket at Bryant Park





### Space Overview

- 2** windowed offices
- 5** open seating area  
(ability to densify)
- 1** reception area
- 2** conference rooms
- 1** open pantry