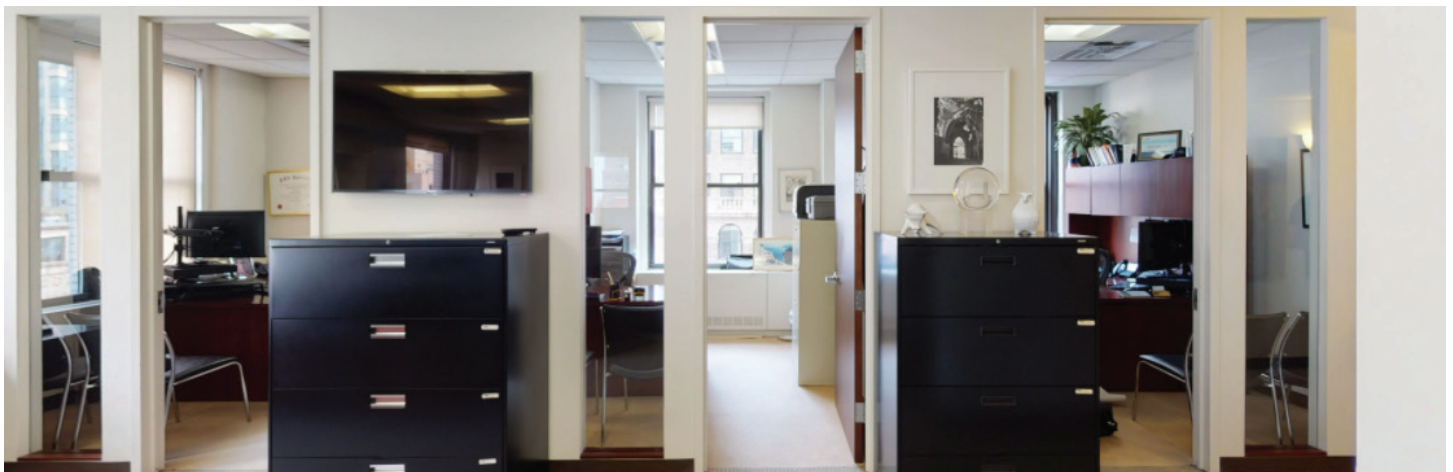


# GREAT VIEWS + IMMEDIATE OCCUPANCY



## Space Profile

Size: **2,789 SF**

Floor: **Partial 20th**

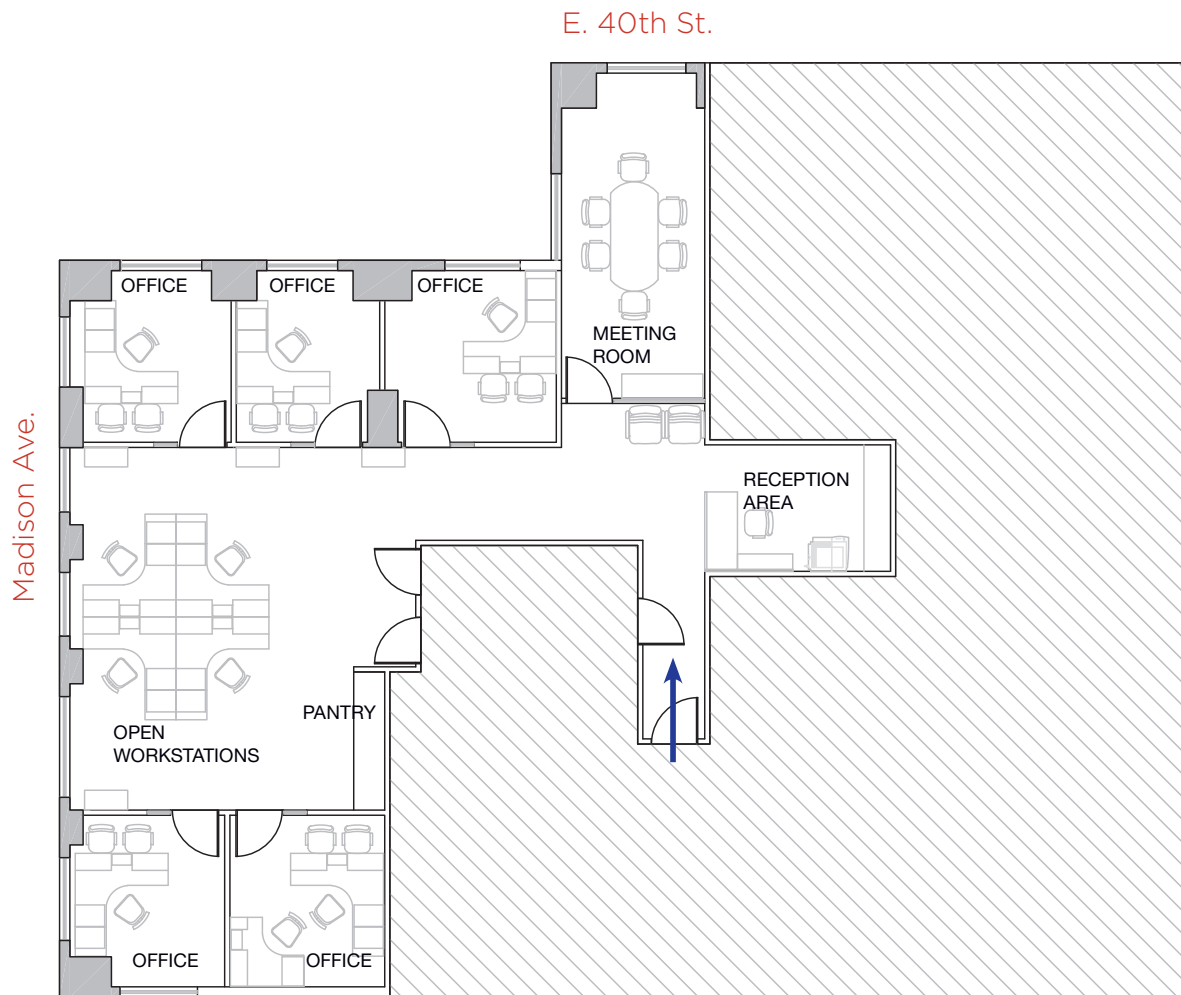
Rate: **Upon request**

Availability: **Immediate**

Term: **Through June 30, 2022**

## Key Highlights

- Built & furnished in great condition
- Excellent views, including down to the Empire State Building
- Convenient Grand Central location
- 2 windowed corner offices, 2 windowed offices, 1 interior office, windowed conference room, 5 work stations



### Space Overview

- 2** windowed corner offices
- 2** windowed offices
- 1** interior office
- 1** windowed conference room
- 5** work stations