

28 WEST 27TH STREET

BETWEEN 6TH AVENUE & BROADWAY

IN THE HEART OF CHELSEA

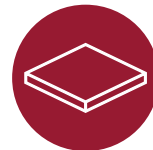
4TH FLOOR, UNIT A

1,000 SF

COMMENTS



Great natural light



Hardwood floors



Perfect for all
creative uses



Great transportation

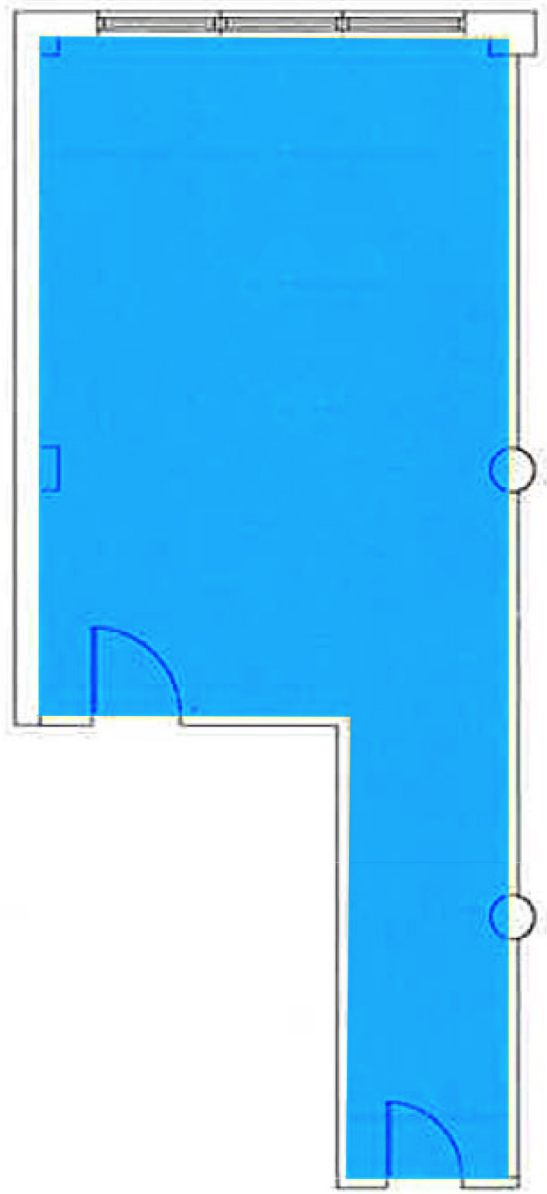
N Q R W 1 2 4 6



28 WEST 27TH STREET

BETWEEN 6TH AVENUE & BROADWAY

4TH FLOOR, UNIT A
1,000 SF



28 WEST 27TH STREET

BETWEEN 6TH AVENUE & BROADWAY

IN THE HEART OF CHELSEA

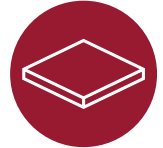
4TH FLOOR, UNIT C

2,250 SF

COMMENTS



Great loft space
with 12' ceilings



Hardwood floors



Perfect for all uses



Easy access to
transportation

N Q R W 1 2 4 6

