

250  
W55





<i>FLOOR</i>	<i>RSF</i>	<i>CONDITION</i>	<i>POSSESSION</i>	<i>TERM</i>
Partial 25	5,747	Built	October 2020	3-5 years
Partial 15	3,110	Built	July 2020	3-5 years

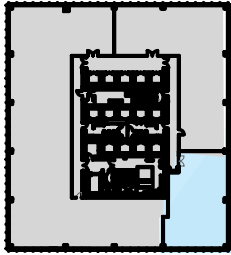
### Space Features

- High-end built space
- Furniture can be made available for the partial 25th floor unit
- 10' finished ceilings
- 10' glass doors and office fronts
- Column and convector free
- High-performance vision glass resulting in quieter space / lower heat load

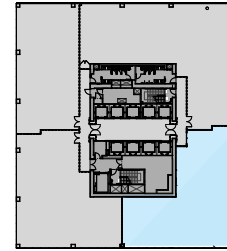
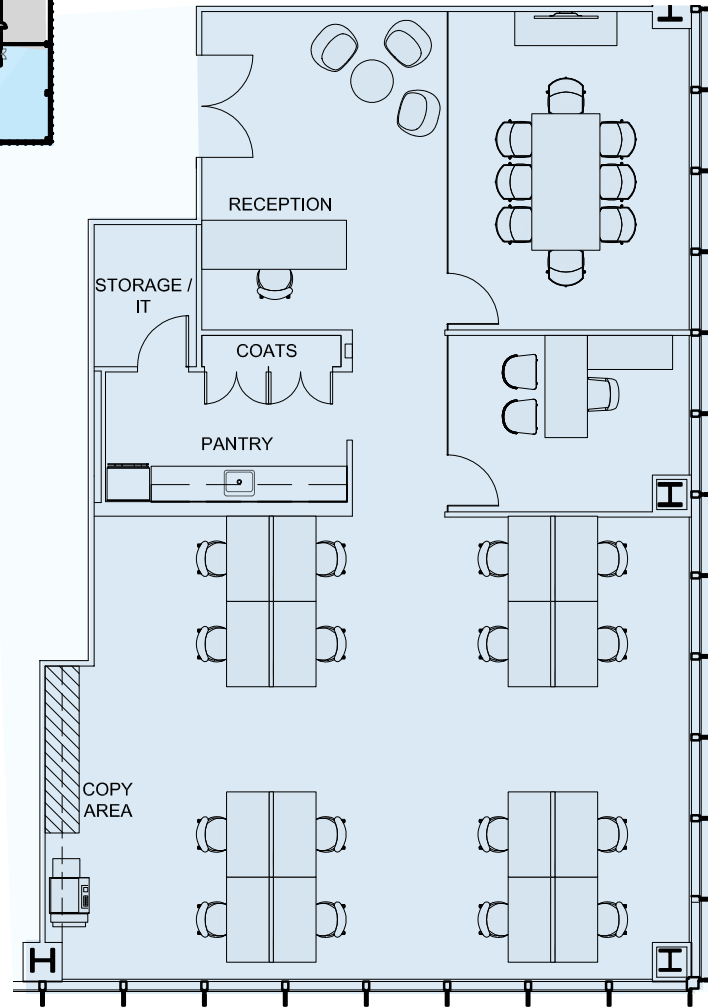
### Building Features

- HVAC—DX units on each floor
- Abundance of premier restaurants and hotels
- 2016 BOMA NY award winner for “New Construction Building of the Year”

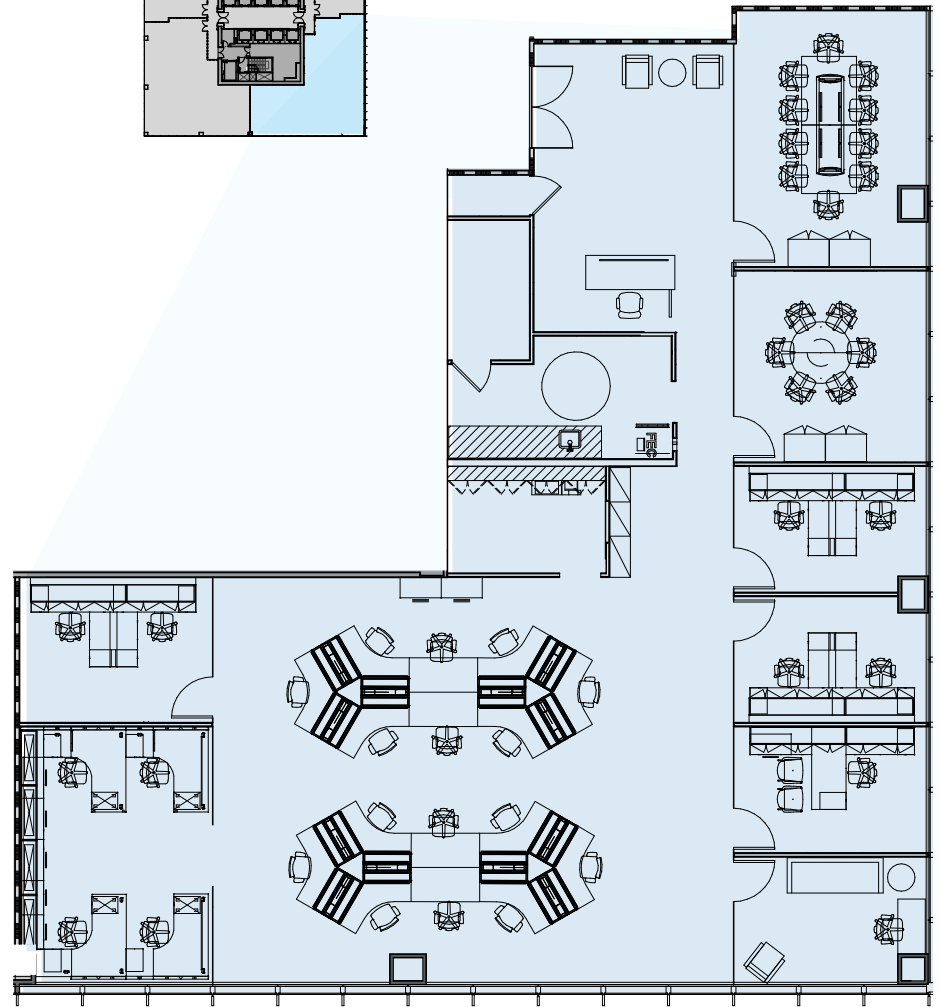




Partial 15 | 3,110 RSF



Partial 25 | 5,747 RSF



54TH STREET



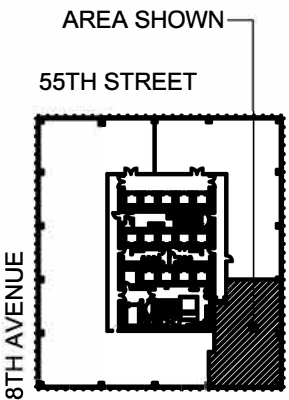
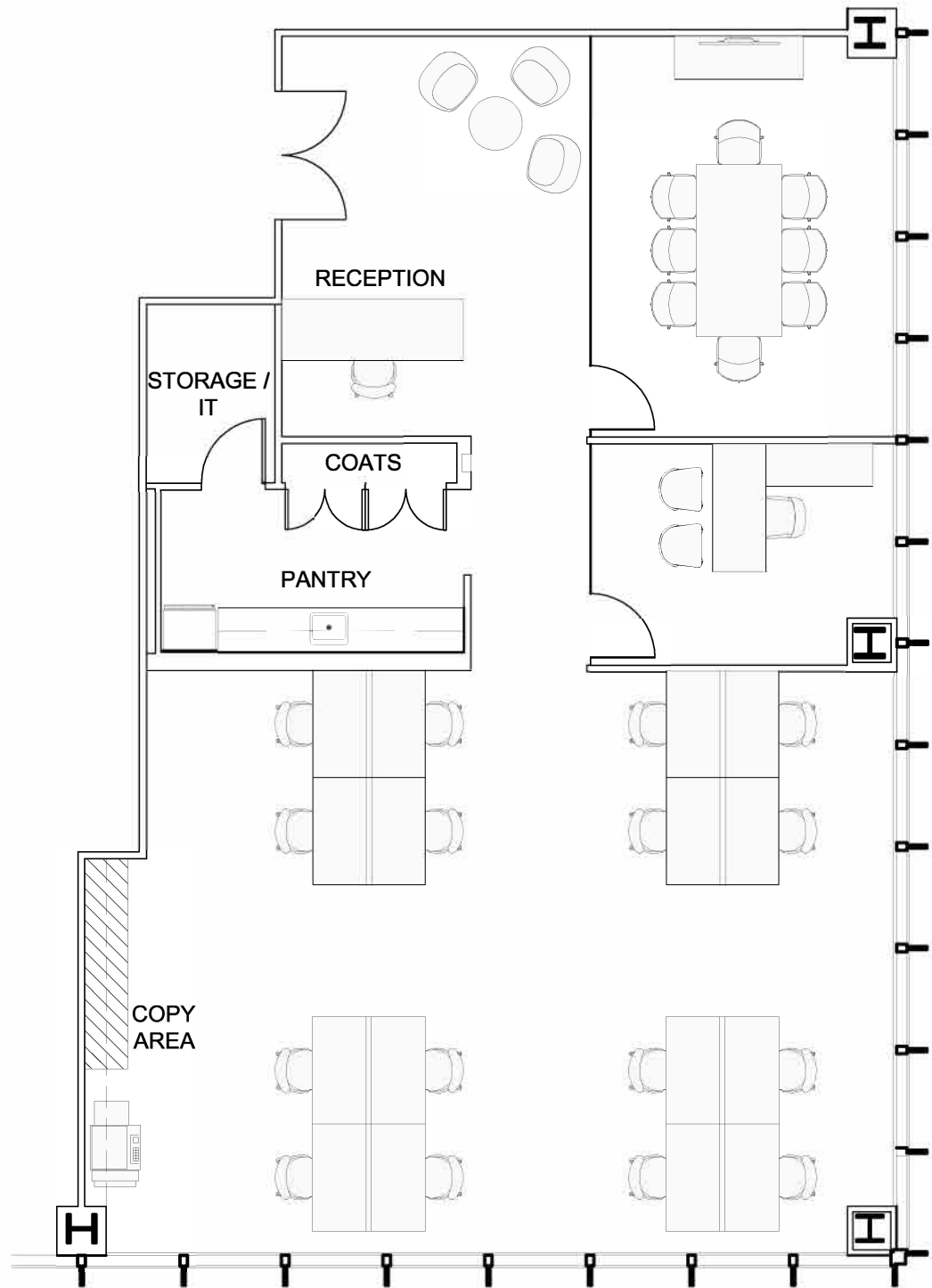




Images are representative of the finishes used in the available space.







KEY PLAN: NTS

LEGEND

WORKSPACE	SEATS
EXECUTIVE OFFICE	1
PRIVATE OFFICE	2
BENCHING	8
RECEPTION	1

TOTAL HEADCOUNT	12
-----------------	----

COLLABORATIVE SPACE	
CONFERENCE ROOM	1

SUPPORT	
PANTRY	1
COAT CLOSET	1
COPY AREA	1
STORAGE / IT ROOM	1

250

WEST 55TH STREET  
15 FLOOR | TEST FIT - SUITE 1502 | 03.12.20

