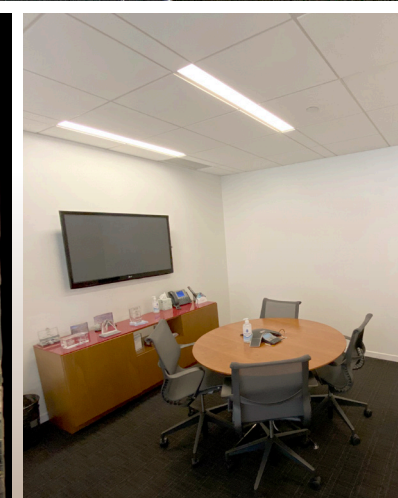


A low-angle, upward-looking photograph of the 1370 Avenue of Americas skyscraper. The building's glass facade reflects the sky and surrounding structures. To the left, a white brick building with many windows is visible. To the right, another brick building features a banner that reads "DUANET by Wala". At the base of the skyscraper, "CHASE" logos are visible in the windows. A green banner with white text is positioned across the lower part of the image.

1370

PARTIAL 20TH FLOOR: 3,374 RSF | SUBLEASE | TERM: THRU JUNE 30, 2024

AVENUE OF AMERICAS



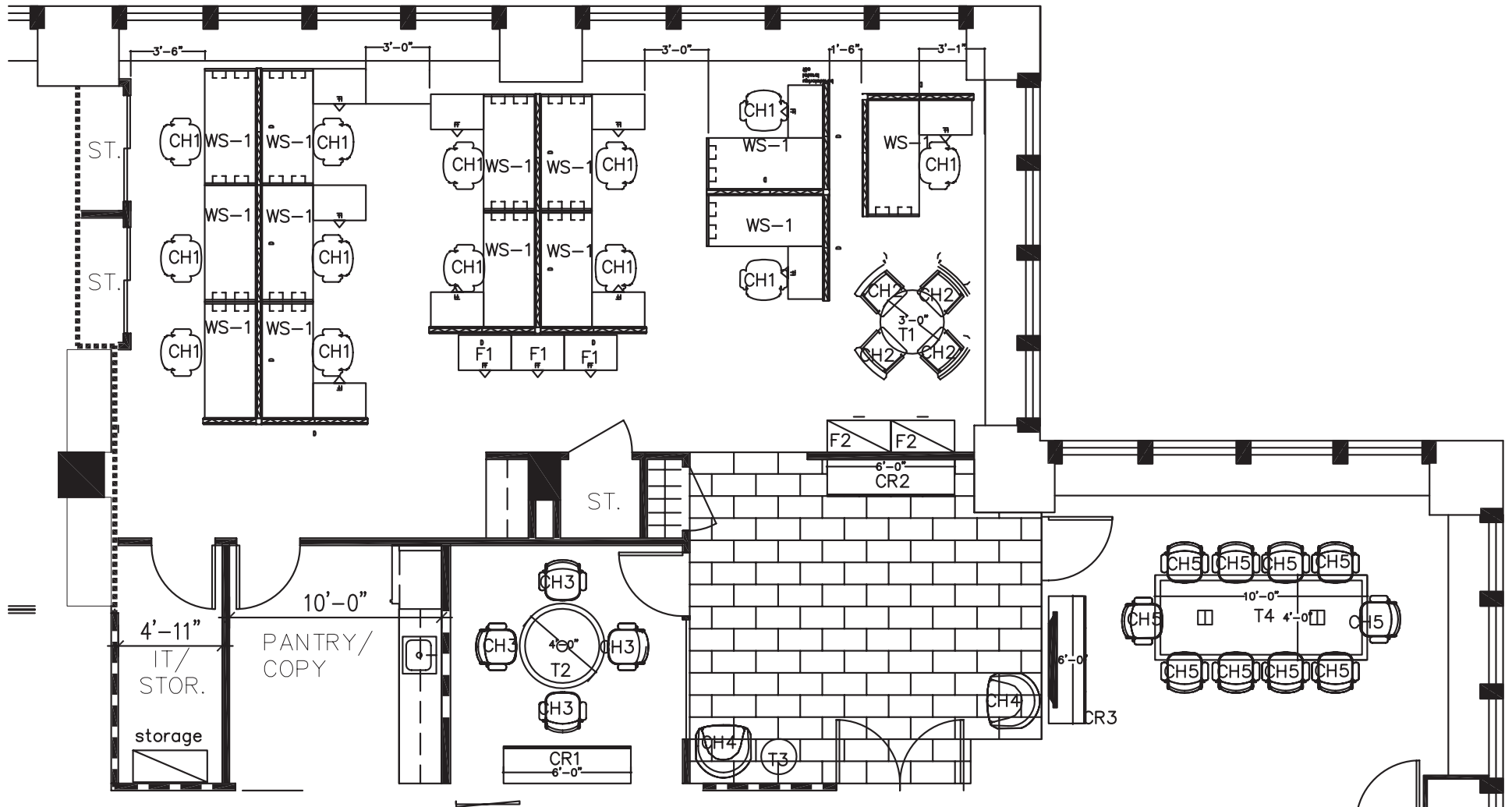
SPACE FEATURES

PARTIAL 20TH FLOOR: 3,374 RSF | SUBLEASE | TERM: THRU JUNE 30, 2024

Recently Built, Plug & Play Space Featuring:

- One (1) Large Conference Room (10-person)
- One (1) Small Conference Room (4-person)
- Open area with 13 desks
- Break Out / Meeting Area (4-person)
- Pantry
- Server Room
- Storage Closets
- Reception

WEST 56TH STREET



FLOOR PLANS

The image shows a modern office interior. In the foreground, there is a long wooden conference table with several black leather chairs. On the table, there is a water bottle, some papers, and a tablet. To the left, there is a whiteboard on a stand. In the background, there is a large window with a view of a city skyline, including a tall yellow building. A green semi-transparent overlay covers the center of the image, containing the text '1370' and 'AVENUE OF AMERICAS'.

1370

AVENUE OF AMERICAS
