

363 Seventh Avenue – 10th Floor

Between 30th and 31st Street



Approximate Size: 3,600 Square Feet

Asking Rent: \$43 / PSF

Possession: Available Immediately!

Electric: Direct Meter

Comments: Private floor with keyed elevator entry. Office intensive layout with three sides of South-West facing light; includes 1 large conference room, 6 windowed offices, 1 internal office, and a large open reception/waiting area. Server room, wet pantry, and private men and women's restrooms. Doorman M-F between 7^{AM}-7^{PM}, freight elevator access, Tenant controlled HVAC. Close proximity to Penn Station.

363 Seventh Avenue – 10th Floor

Between 30th and 31st Street



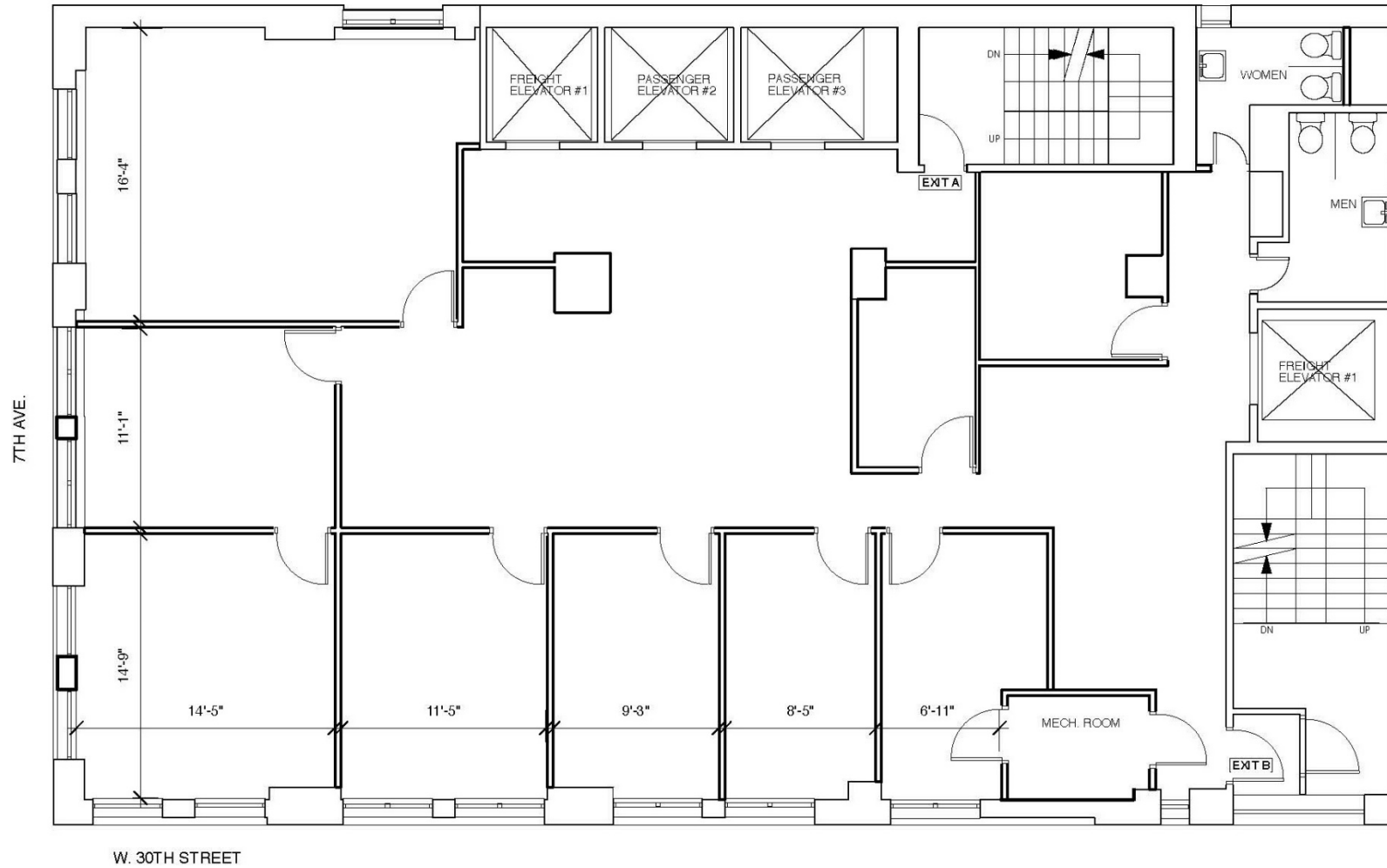
363 Seventh Avenue – 10th Floor

Between 30th and 31st Street



363 Seventh Avenue – 10th Floor

Between 30th and 31st Street



363 Seventh Avenue – 10th Floor

Between 30th and 31st Street

