

# 527 MADISON AVENUE

LAST UNIT AVAILABLE IN THE BUILDING



PARTIAL 12TH FLOOR PRE-BUILT AVAILABLE FOR IMMEDIATE OCCUPANCY 3,623 RSF

## PROPERTY OVERVIEW

Excellent Transportation Access 

Open floor plan with high ceilings

Prestigious plaza district address

Prime institutional landlord

10th floor terrace for building tenants





# 527 MADISON AVENUE

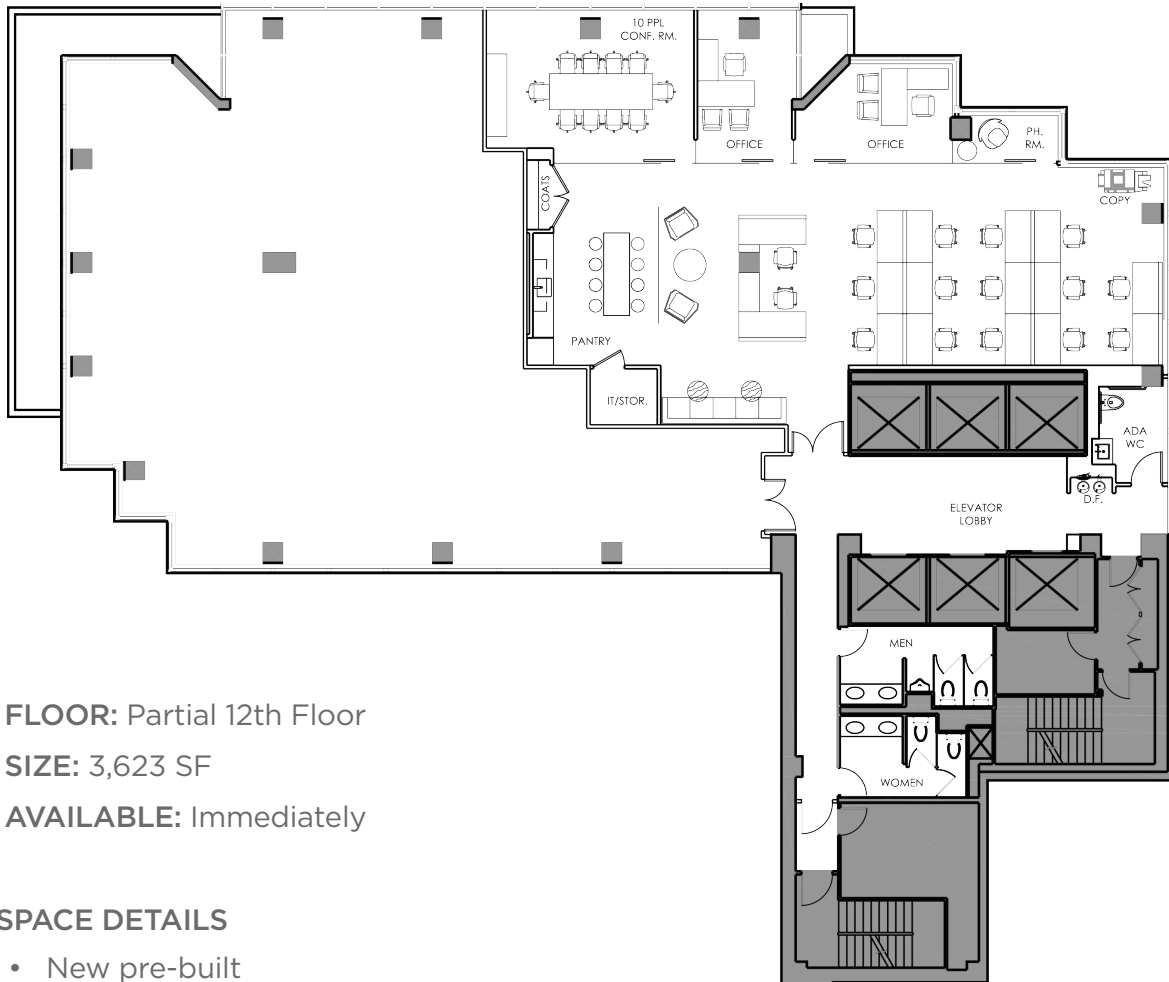
## PHOTOS



# 527 MADISON AVENUE

## FLOOR PLAN

### 12TH FLOOR



**FLOOR:** Partial 12th Floor

**SIZE:** 3,623 SF

**AVAILABLE:** Immediately

#### SPACE DETAILS

- New pre-built