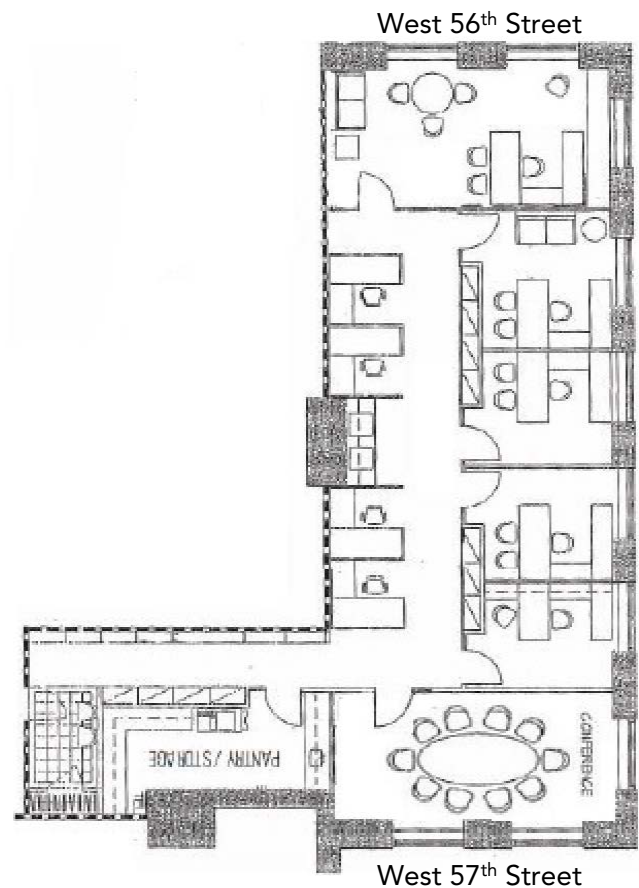


# 152 WEST 57TH STREET

BETWEEN SIXTH AND SEVENTH AVENUES



PREMISES	SIZE	ASKING RENT	POSSESSION	TERM
Partial 37th Floor	3,643 RSF	Upon Request	Immediate	October 30, 2023

## COMMENTS

- Nicely built office intensive space
- Built with 4 offices, 2 large conference rooms, 4 workstations, pantry, copy & storage
- Sweeping views of Central Park
- Direct elevator presence