

118 West 27th Street



Chelsea Full Floor Commercial Lofts

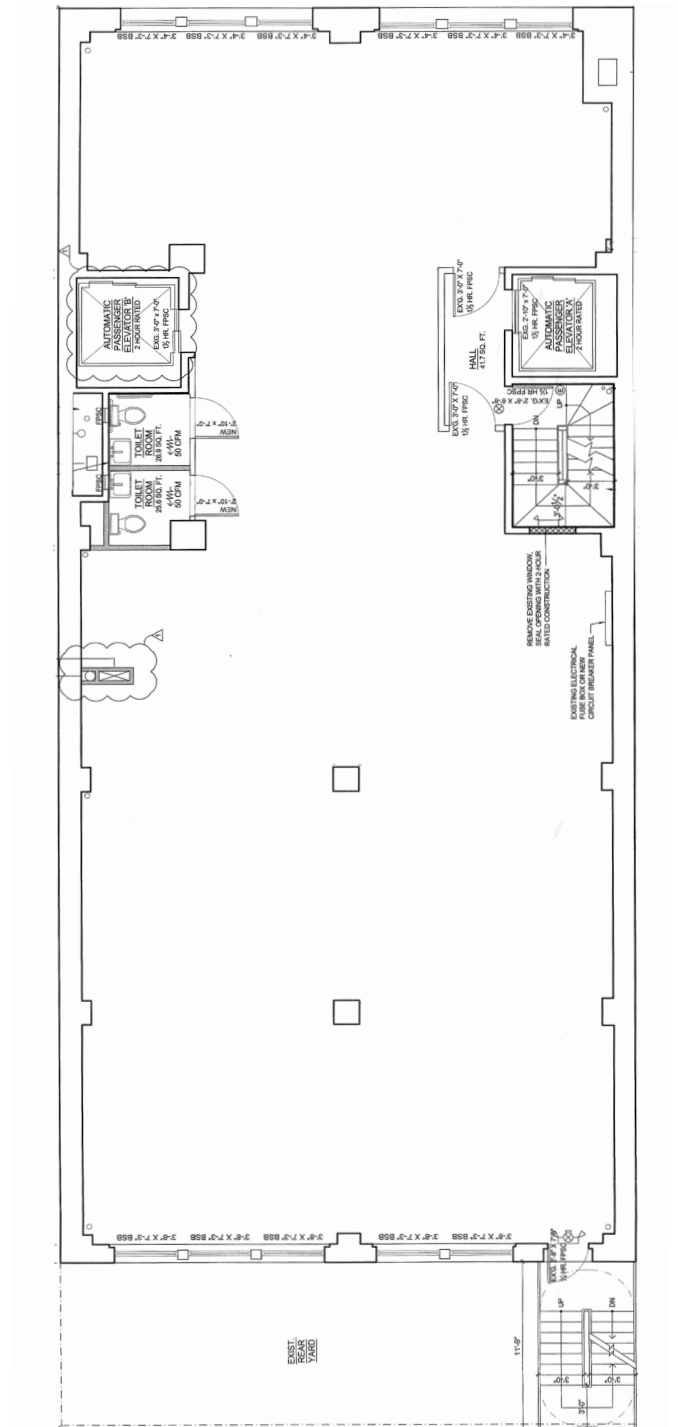
- Boutique office building with low foot traffic in lobby and elevators
- Located in the heart of Chelsea
- Close proximity to multiple subway stations
- Floors 3-6 can be combined
- High ceilings on each floor
- Only two columns per floor
- Two new elevators
- Central HVAC
- New bathrooms
- New kitchens
- ADA compliant elevators and lobby, ideal for medical tenants

For Lease

3,700 sq ft per floor
Floors 3-6 available
Floor 11 available

118 West 27th Street

Typical Plan, Floors 3-6, 11



118 West 27th Street

Renderings of Planned Lobby Renovation

