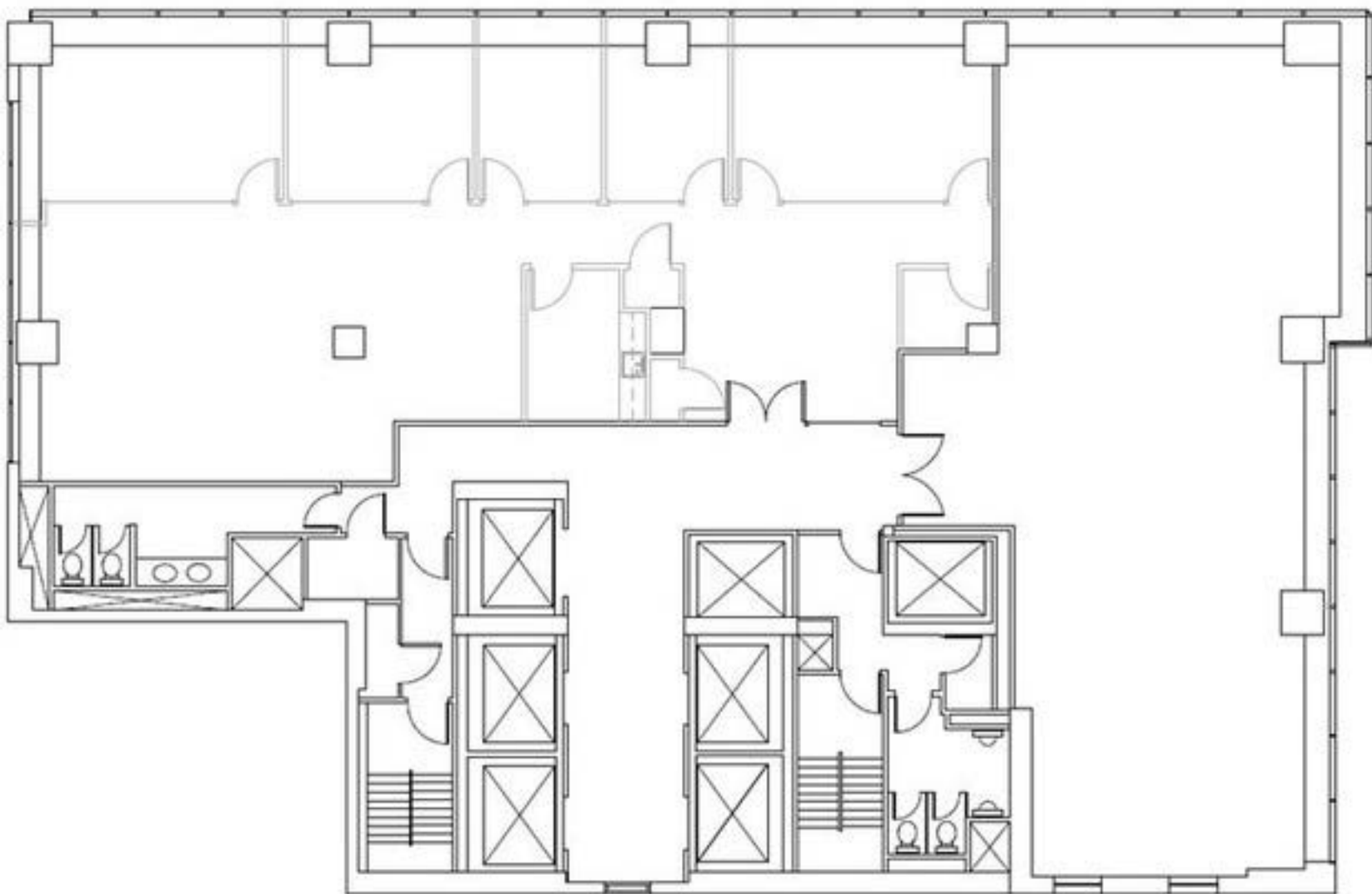
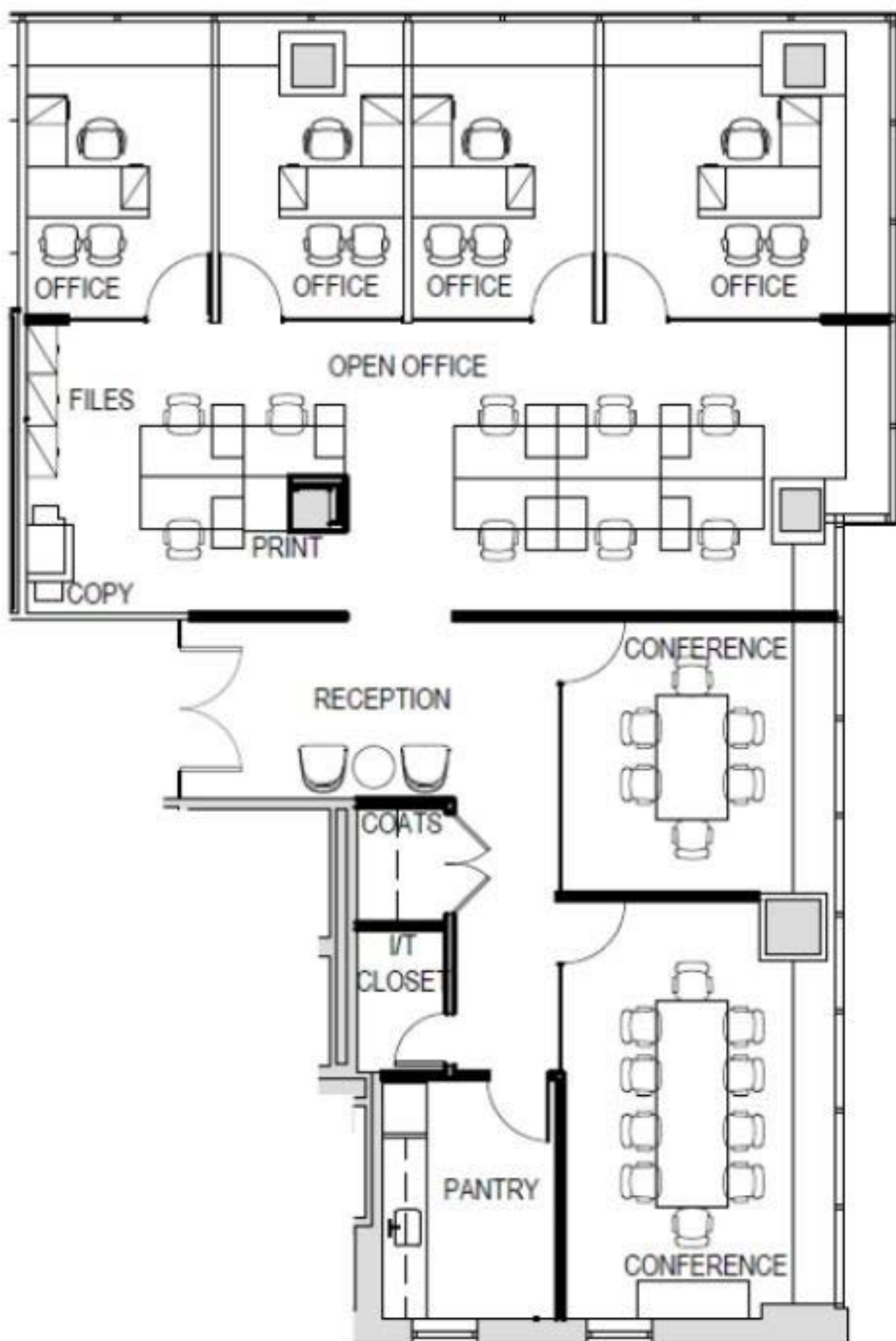


East 55th Street

Madison Avenue



East 55th Street



Madison Avenue

540 MADISON

540 Madison Avenue is
the epitome of the Plaza District's
sophistication and prestige.



WELCOME TO WORLD CLASS

CONTENTS

540 MADISON →

[LOBBY](#)

|

[WATER TOWER LOUNGE](#)

|

[OFFICES](#)

NEIGHBORHOOD →

OWNERSHIP →

CONTACT →

ELEVATE YOUR WORKDAY

This newly renovated, 39-floor office tower offers all the upscale amenities of a trophy-class building with the personal touch of boutique office space.

Here, luxury and hospitality come together to provide world-class workspace in one of New York City's most sought-after neighborhoods.



ENHANCED LOBBY EXPERIENCE

TAILOR-MADE MORNINGS

Our newly renovated lobby has been redesigned with the utmost care and uncompromising attention to detail, providing occupants with a grand selection of comforts and conveniences. Grab a paper or pick-me-up at our tenant-only refresh bar as you make your way into work via the destination dispatch and upgraded elevators.



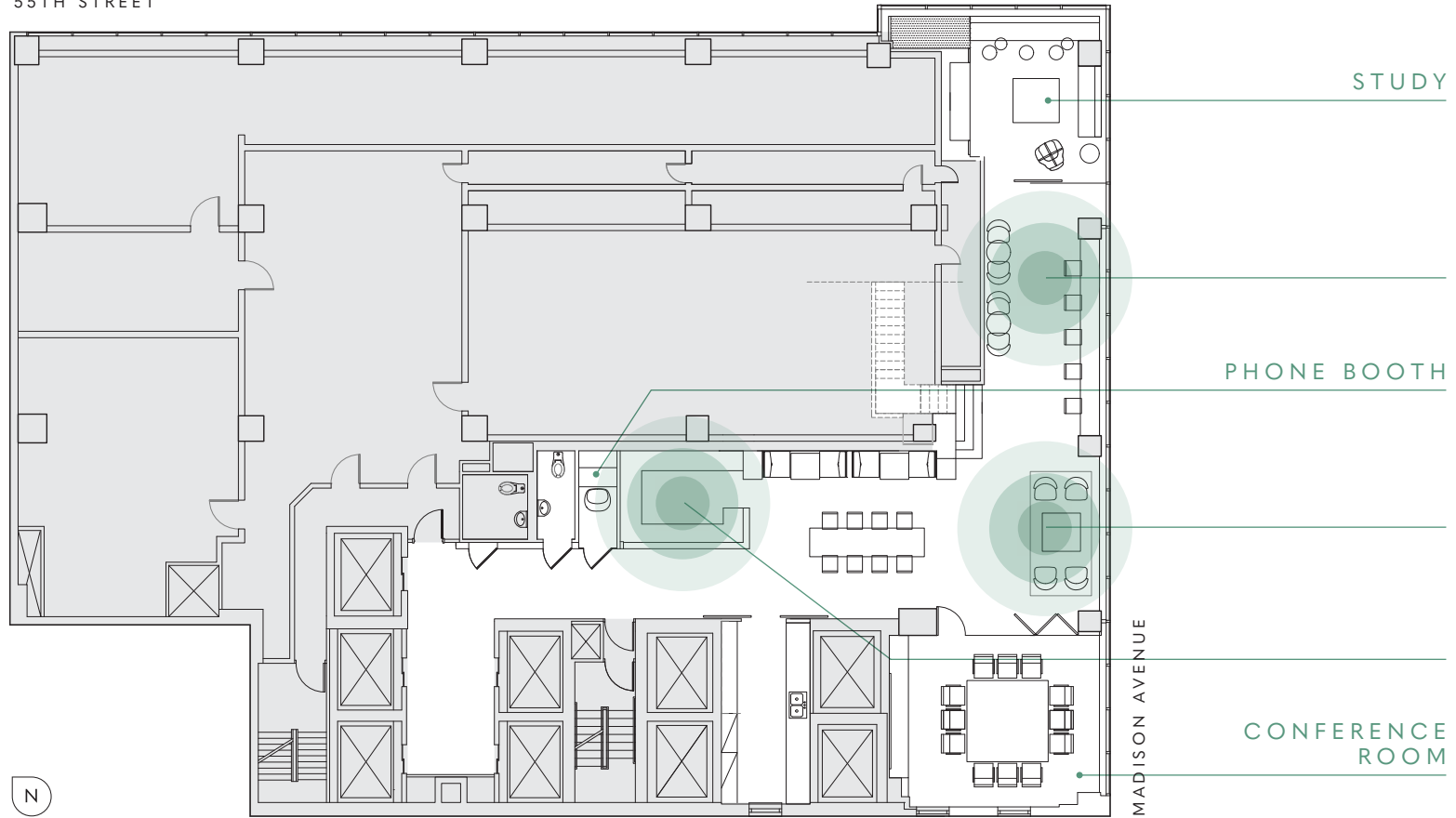
Fresh Coffee
BREWED DAILY

Rotating
Juices



COMPLIMENTARY
Newspapers

55TH STREET





WATER TOWER LOUNGE



BARISTA BAR

11th Floor



WATER TOWER LOUNGE

DEDICATED SPACE TO WORK & UNWIND

The Water Tower Lounge has been thoughtfully designed to house a variety of private amenities and shared meeting spaces throughout the 11th and 12th floors, including a full-service barista bar, an open-concept work lounge, private phone booths, a grab & go kitchen, a mother's room, locker rooms and showers, and a spacious conference room.

Breakout
Space

High-End
Amenities





OPEN LOUNGE

11th Floor

WORLD-CLASS COMFORT, INSIDE & OUT

Enjoy breathtaking views of Central Park and the surrounding Plaza District from the 12th floor. Floor-to-ceiling windows on the building's northeast side look onto East 55th Street, while an outdoor terrace overlooks Madison Avenue.

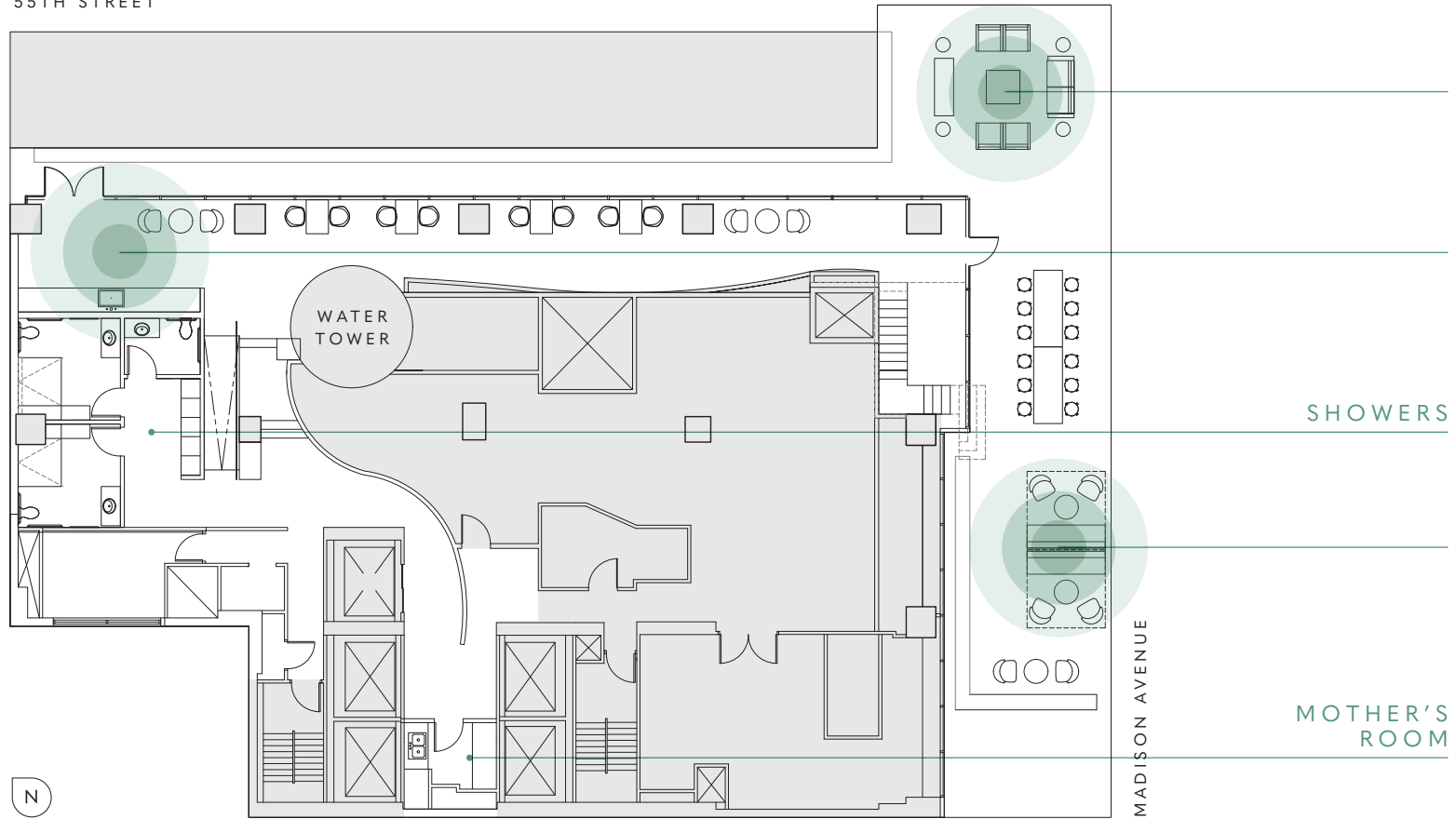


Rooftop
LOUNGE SEATING

Stunning
Views
AND NATURAL LIGHT

Private
OUTDOOR CABANAS

55TH STREET



SHOWERS

MOTHER'S
ROOM

MADISON AVENUE

WATER TOWER LOUNGE

12th Floor



WORK WALL & PANTRY

12th Floor



TERRACE LOUNGE

12th Floor



TERRACE CABANAS

12th Floor



OFFICES

WHITE GLOVE, TURN-KEY

The office floors feature luxury workspace of a size that is unique for the Plaza District.

Boutique, turn-key floor plates create an intimate atmosphere while offering plenty of personal space for your employees.



Central Park VIEWS

Private & Collaborative WORKSPACES

High End FINISHES



TENANT RECEPTION & LOUNGE AREA



TENANT CONFERENCE ROOM



TENANT CAFÉ & PANTRY

AN ELITE ADDRESS

540 Madison lies in the heart of the world's largest central business district. With easy access to Central Park, several transportation hubs, and 5th Avenue retail, the best of the Plaza District is at your fingertips.



108

RESTAURANTS, BARS & CAFÉS
WITHIN A 5 MINUTE WALK

10

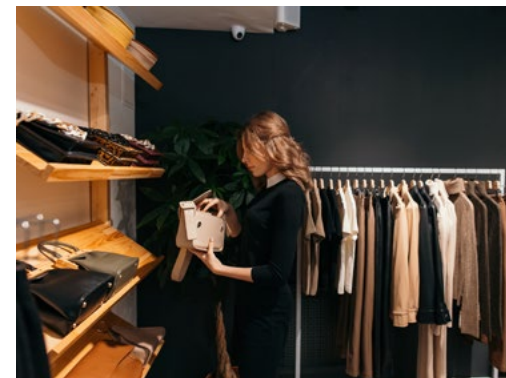
SUBWAY LINES WITHIN
AN 8 MINUTE WALK

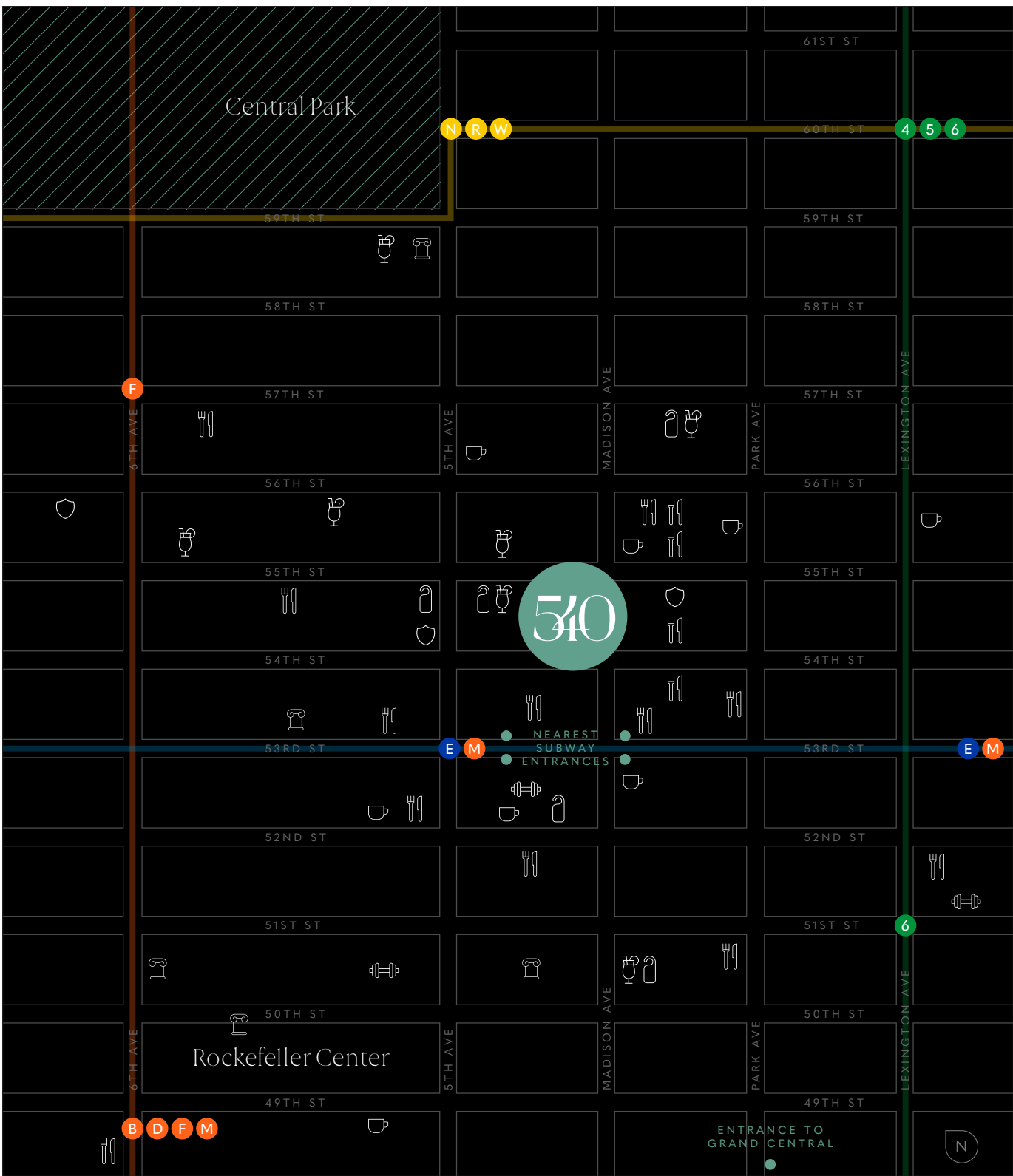
7 Min

WALK TO CENTRAL PARK

13 Min

WALK TO GRAND CENTRAL





NEIGHBORHOOD

IN GOOD COMPANY

RESTAURANTS

- 21 Club
- Aquavit
- Casa Lever
- Del Frisco's
- Fig & Olive
- Nobu 57
- The Modern
- The Monkey Bar

FAST-CASUAL

- sweetgreen
- Dig Inn
- Roast Kitchen
- Maison Kayser
- The Little Beet
- Le Pain Quotidien
- Essen
- Chopt

BARS

- King Cole Bar
- The Polo Bar
- The Champagne Bar
- The Whitby Bar
- Trouble's Trust
- Ty Bar
- Whiskey Trader

CAFÉS

- Bouchon Bakery
- Blue Bottle Coffee
- Gregorys Coffee
- Joe & The Juice
- Little Collins
- Macchiato Espresso Bar
- Starbucks

FITNESS

- Equinox 53rd St
- Equinox Rockefeller Center
- New York Sports Club

CLUBS

- CORE: Club
- NY Health & Racquet Club
- The University Club

SITES & CULTURE

- MoMA
- Pulitzer Fountain
- Radio City Music Hall
- St. Patrick's Cathedral
- Top of the Rock

HOTELS

- Four Seasons Hotel
- Lotte New York Palace
- Omni Berkshire Place
- The Peninsula Hotel
- The St. Regis New York

INSPIRED BY THE
ENERGY OF PEOPLE.

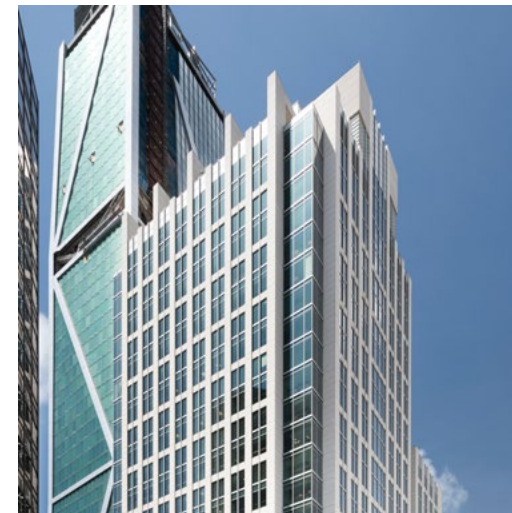
INVESTED IN THE
POWER OF PLACE.

DivcoWest, founded by Stuart Shiff, is a vertically-integrated operator, owner, developer and real estate partner to the innovation economy. DivcoWest employs approximately 140 employees across corporate offices in San Francisco, Los Angeles, Boston, Washington, D.C. and New York as well as numerous property management locations across the US. Since its inception, DivcoWest and its predecessor have acquired more than 46 million square feet of commercial space — primarily throughout the US.

DivcoWest has a longstanding history of investing primarily in properties that serve the innovation markets of the economy, seeking to capitalize on DivcoWest's extensive network of relationships within the markets for which the company has served over the last 25+ years. DivcoWest's real estate portfolio currently includes existing and development properties consisting of office, R&D, lab, industrial, retail and multifamily.



25+
YEARS OF EXPERIENCE



46 Million SF
OF COMMERCIAL REAL ESTATE IN THE US