



# For Sublease

**Priced to move**

**1400 Broadway  
(Between 38<sup>th</sup> and  
39<sup>th</sup> Streets)**

**Entire 18th Floor:**

- Approx. 31,464 RSF

**Term:**

- Through May 2029

**Layout:**

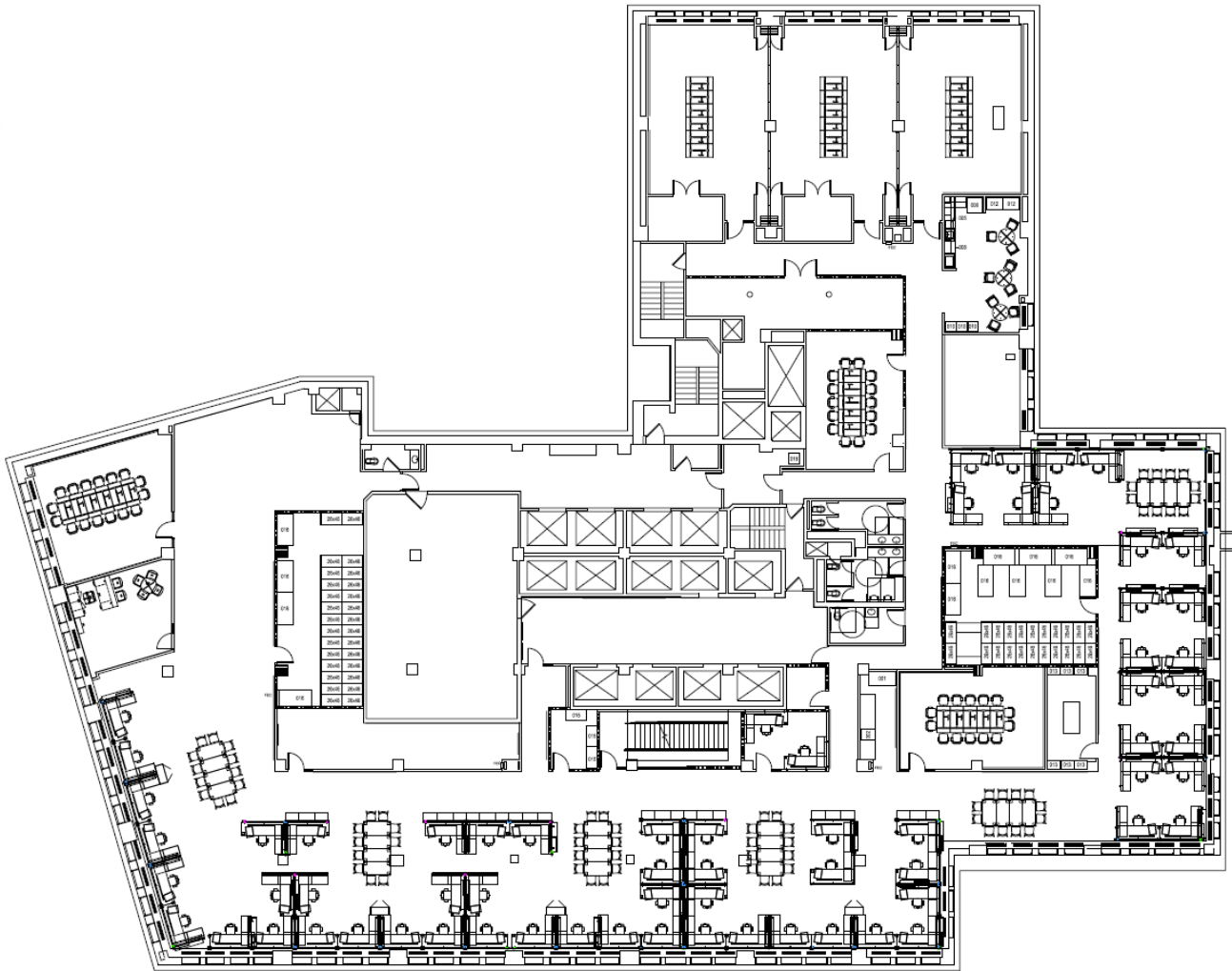
- 4 Offices, Panty, 3 Connecting Conference Rooms with removable walls that can accommodate 140 people, 6 Large Collaborative Areas, 3 Additional Conference rooms with tables for 16 people in each

**Features:**

- Direct elevator presence
- Strong credit sublandlord
- Soaring light & views
- Furniture can be made available
- Centrally located in proximity to Grand Central, Port Authority & Penn Station
- 24/7 tenant controlled HVAC

# For Sublease

## As-Built Floor Plan:



# For Sublease

## Finishes:

