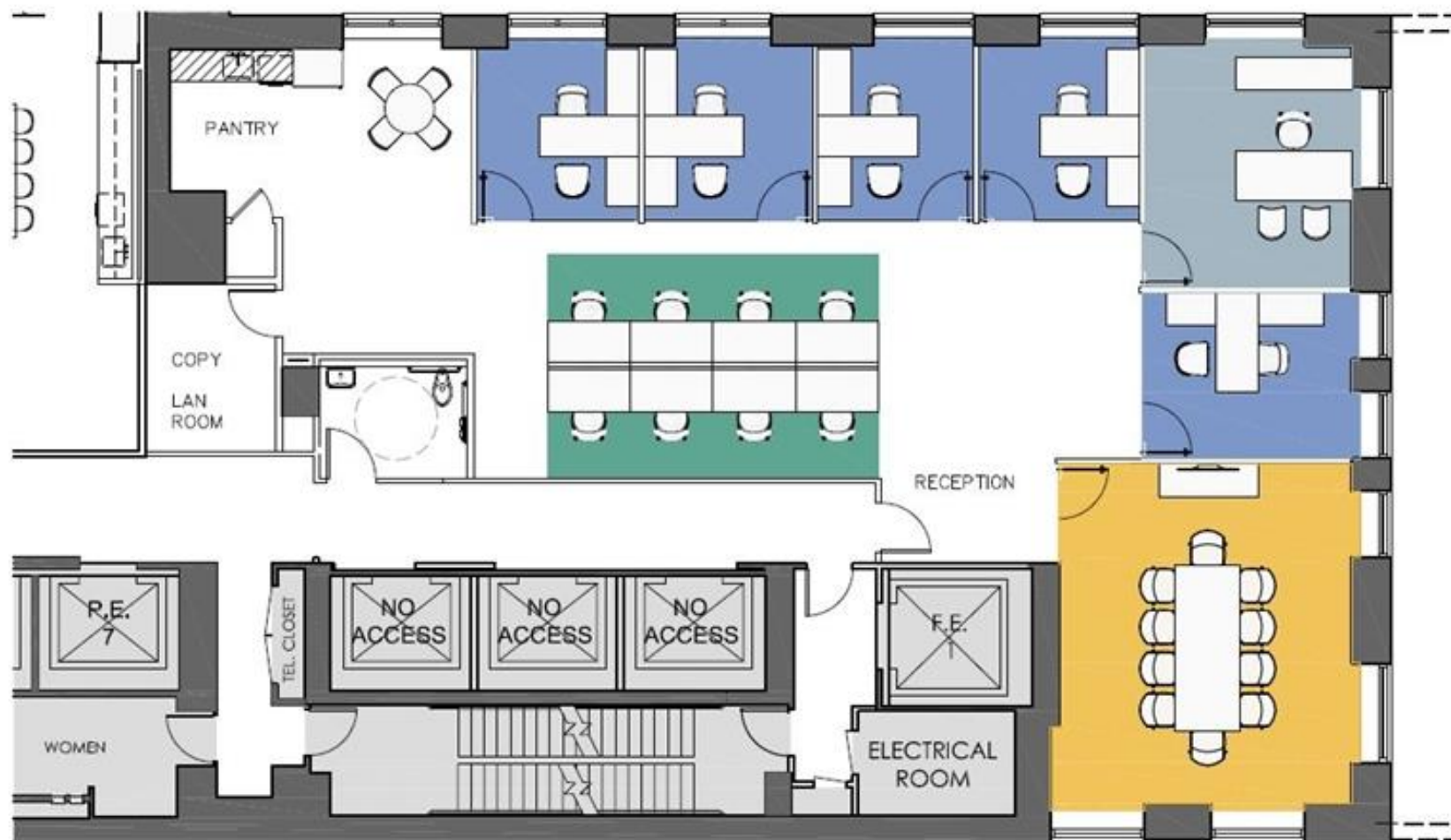




**CARNEGIE HALL TOWER**  
**152 WEST 57<sup>TH</sup> STREET**

## FLOOR PLAN

**152**  
**WEST 57<sup>TH</sup>**  
**STREET**



**FLOOR/AREA**      Partial 39<sup>th</sup> Floor: 4,247 RSF

**POSSESSION**      Immediate

**RENTAL RATE**      Upon Request

**TERM**              2-3 Years

**COMMENTS**

- New high-end installation
- Concrete floors, exposed ceilings, and glass office fronts
- 6 offices, 1 conference room and open area
- Central Park views
- High quality Sublandlord, occupying the balance of the floor



