

307

FIFTH AVENUE

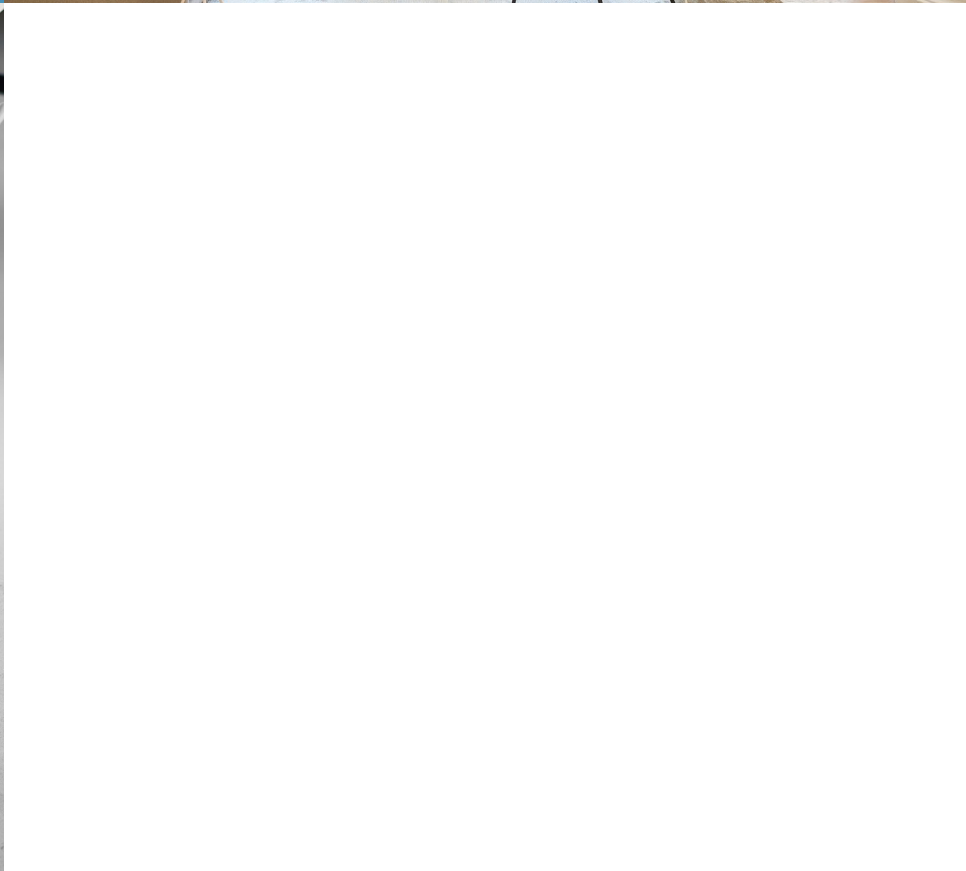
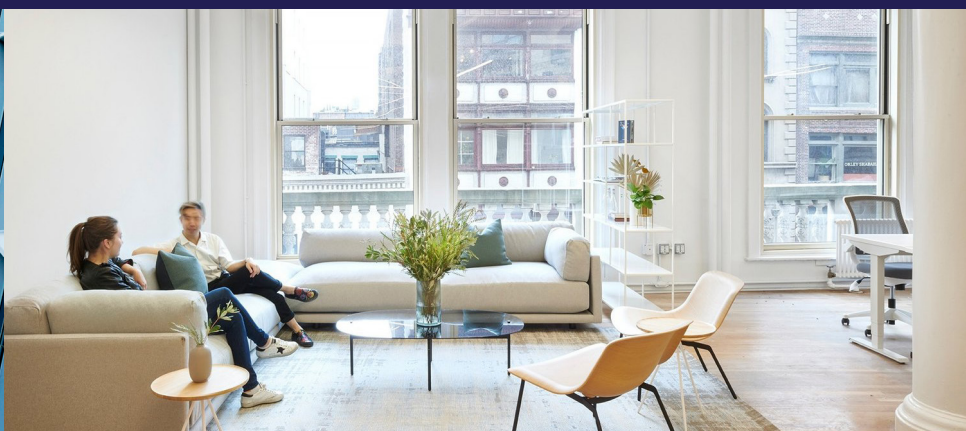
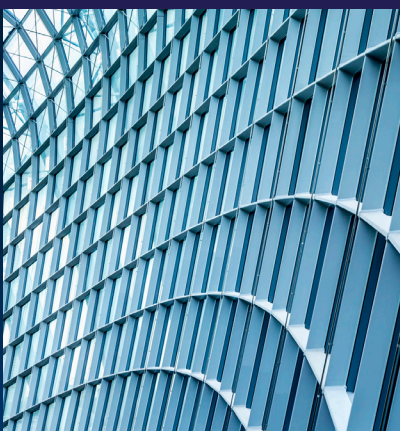
4,000 RSF

Entire 17th

27 max

February 2020





Location



The neighborhood

Conveniently located near NoMad

Commute

4/5/6 trains

N/Q/R/W trains

B/D/F/M trains

Restaurants

Plethora of lunch and coffee options nearby include Chipotle, Xi'an's Famous Foods, Starbucks, Stumptown, and Gregory's

Landmarks

Madison Square Park and Madison Square Garden



Experience



The experience

Arrival

Recently renovated lobby

Reception

24/7 security

Floors

Beautiful views of 5th avenue, exposed ceilings, polished concrete floors, and glass front conference rooms

Building overview

4,000 RSF

307 Fifth Avenue
Entire 17th

27 max

Flex

February 2020



Strategy: Static



Workplace metrics

Workseats

Desks 26

Closed

Medium meeting 2

Phone booths 1

Open

Reception 1

Commons 1

Collaboration 3

Support

IDF 1

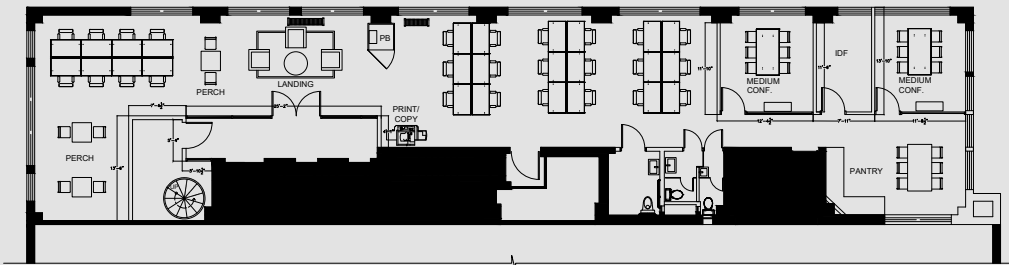
Restrooms 2

Copy / Print 1

LEVEL: Entire 17th

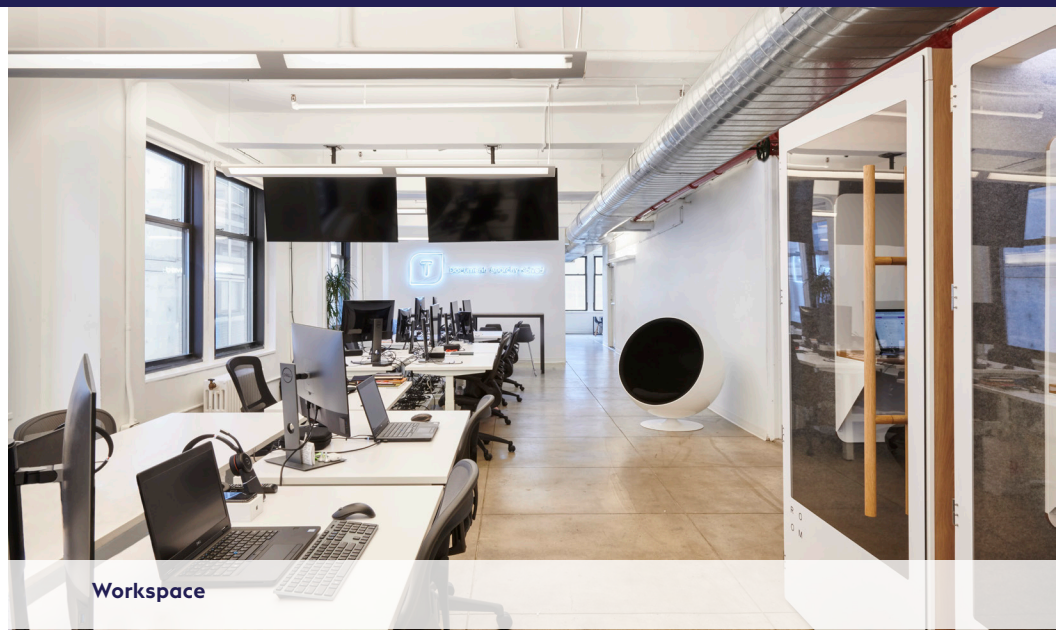
RSF: 4,000

Max Pers: 27





Reception



Workspace



Workspace



Break out

