

SUBLEASE AVAILABLE

437 MADISON

BETWEEN 49TH & 50TH STREETS



437^{MADISON}

BETWEEN 49TH AND 50TH STREETS



FLOOR/AREA

Partial 27th Floor – 4,090 RSF

POSSESSION

Arranged

TERM

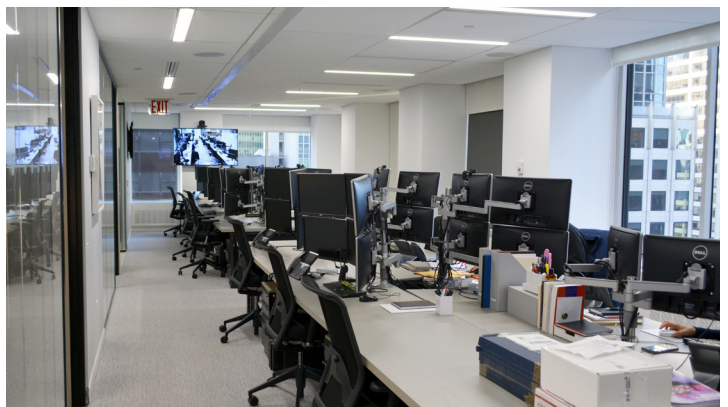
Subleased through April 29, 2023

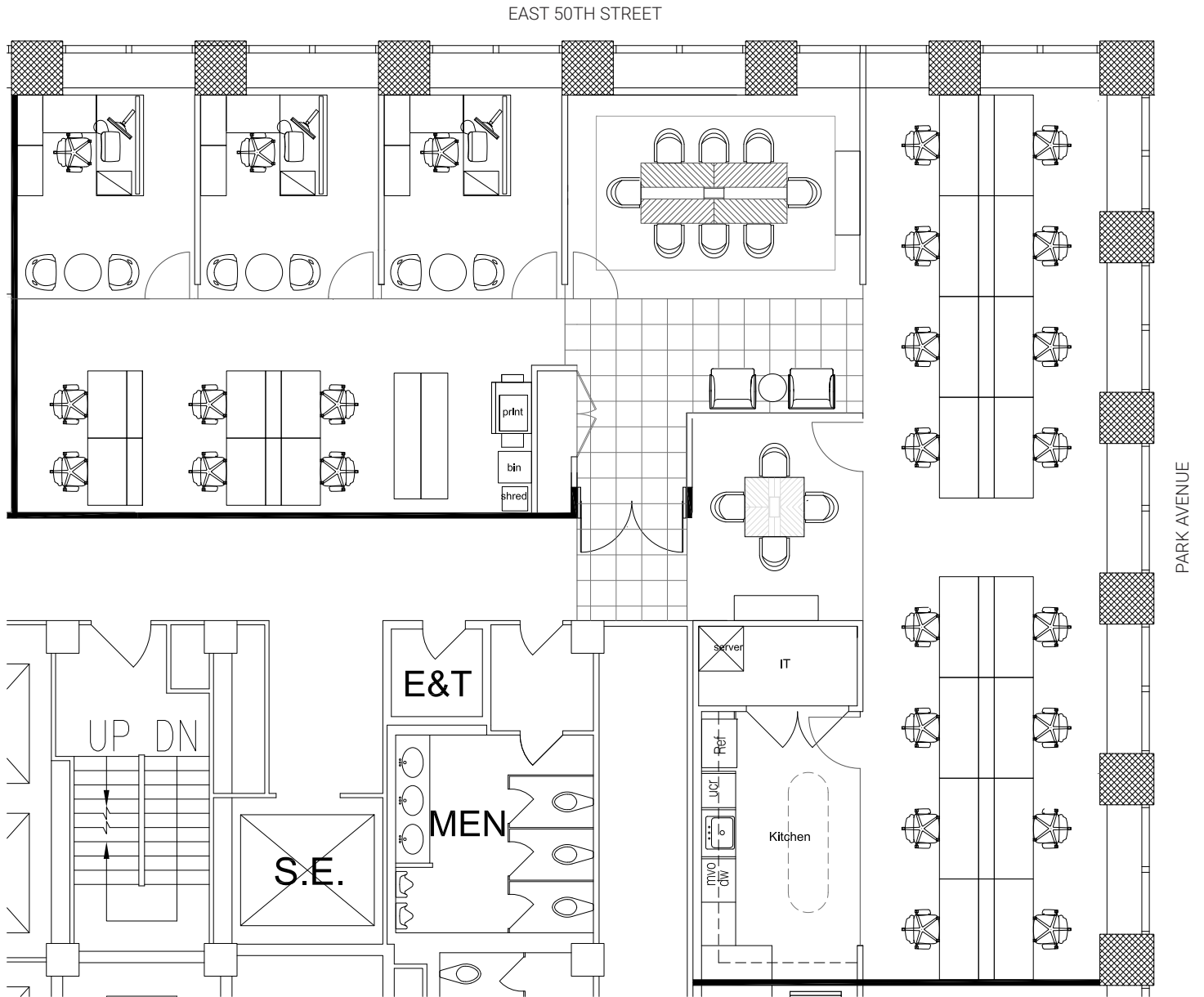
ASKING RENT

Upon request

COMMENTS

- Above standard installation with furniture and wiring in place
- Built with 3 offices, conference room, meeting room and open area for 22 positions
- Exclusive building amenity; Outdoor terrace
- Close proximity to Grand Central Station





SUBLEASE AVAILABLE

437 *MADISON*

