

4K PLUG-AND-PLAY — IN THE HEART OF HERALD SQUARE

Herald Square Building



Space Profile

Size: **4,389 SF**

Floor: **Partial 17th (Suite 1711)**

Rate: **Upon request**

Availability: **Immediate**

Term: **Through May 30, 2024**

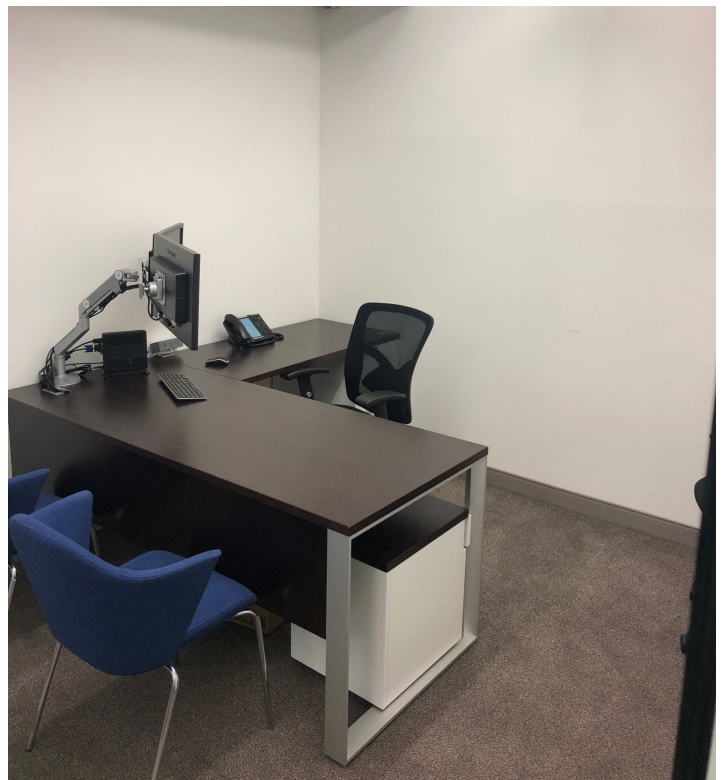
Key Highlights

- Move-in-Condition open office installation
- Fully furnished and wired
- Views overlooking Broadway
- Glass fronts and exposed ceilings
- Excellent access to transportation

SUBLEASE 1350 Broadway, New York, NY 10018



SUBLEASE 1350 Broadway, New York, NY 10018





Space Overview

- | | | | |
|-----------|---------------------|----------|----------------|
| 4 | offices | 1 | reception area |
| 1 | conference room | 1 | open pantry |
| 1 | breakout room | | |
| 16 | workstations | | |
| 2 | collaboration areas | | |