

535FIFTH

STEPS FROM GRAND CENTRAL TERMINAL

FOR LEASE

ENTIRE 31ST FLOOR	4,859 RSF
ENTIRE 26TH FLOOR	4,859 RSF
ENTIRE 13TH FLOOR	7,300 RSF

ASKING RENT: UPON REQUEST

TERM: NEGOTIABLE

PROPERTY HIGHLIGHTS

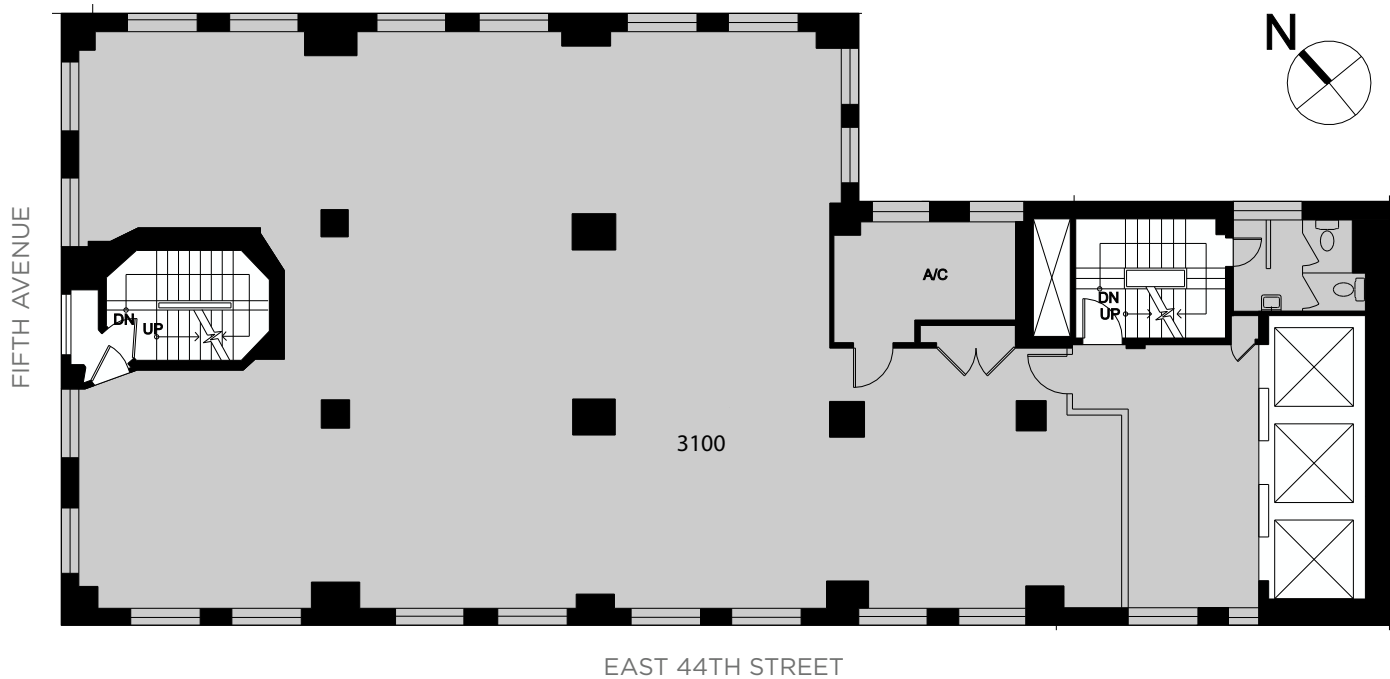
- Close proximity to Grand Central Terminal and Bryant Park
- Commissions paid upon signing
- 24 / 7 / 365 attended lobby



535FIFTH

ENTIRE 31ST FLOOR **4,859 RSF**

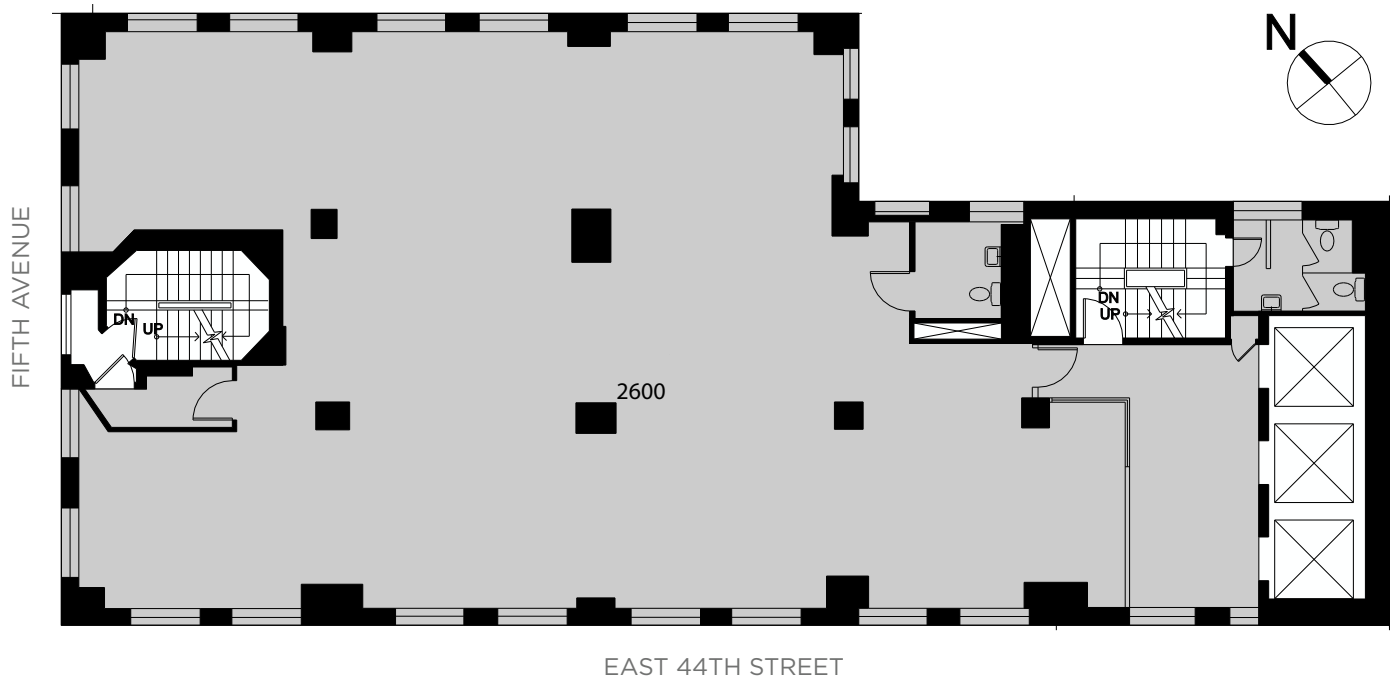
- Full floor opportunity
- White boxed and ready for fit out
- Excellent natural light and views



535FIFTH

ENTIRE 26TH FLOOR 4,825 RSF

- Full floor opportunity
- Landlord will provide NBI or TI allowance
- Excellent natural light and views
- Existing installation



535FIFTH

ENTIRE 13TH FLOOR **7,300 RSF**

- Full floor opportunity
- White boxed and ready for fit out
- Excellent natural light and views
- Above standard ceiling heights
- Large usable terrace

