

FOR SUBLEASE 489 FIFTH AVENUE

Entire 34th Floor (Penthouse): **4,988 SF**

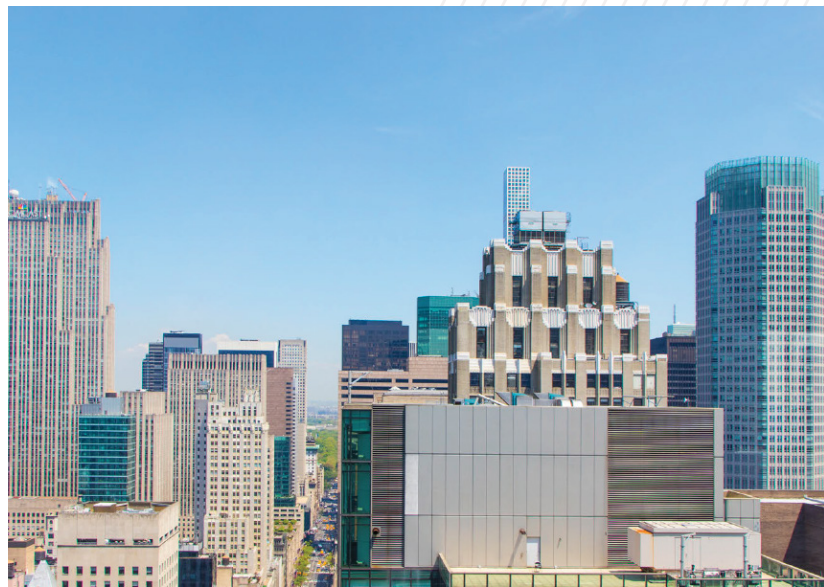


POSSESSION: Immediate

TERM: Through December 2023

SPACE FEATURES

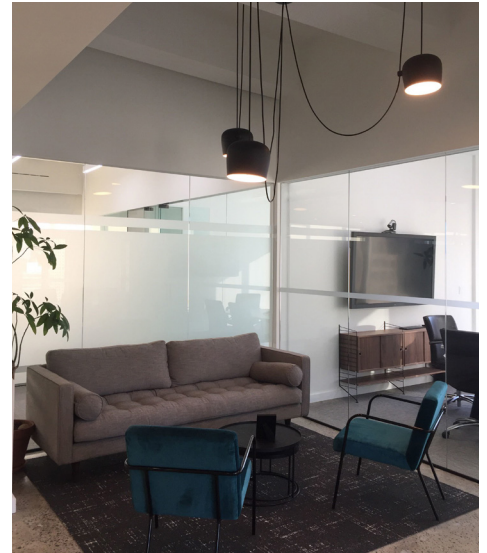
- Penthouse floor with dramatic views overlooking the entire city
- Built with 4 offices, 2 conference rooms, 12 workstations and open pantry
- Polished concrete floors; carpet tiles in offices and conference rooms
- High-end creative finishes and exposed ductwork throughout
- New bathrooms
- Over 20 foot high ceilings
- Recently upgraded lobby and elevator cabs
- Easy access to Grand Central Terminal, the Port Authority Bus Terminal, and Penn Station



SPACE PHOTOS

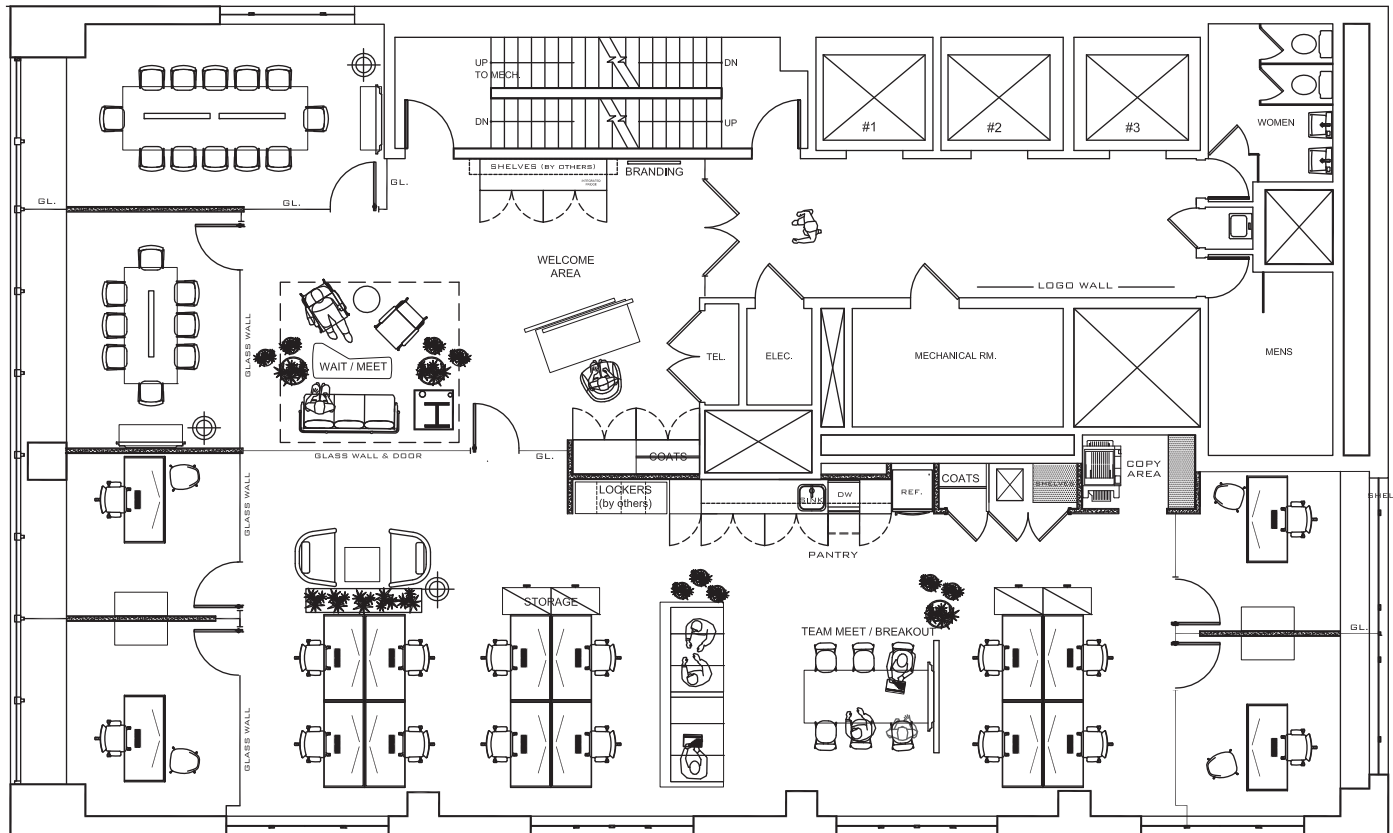
489 FIFTH AVENUE

Entire 34th Floor (Penthouse): **4,988 SF**



FLOOR PLAN 489 FIFTH AVENUE

Entire 34th Floor (Penthouse): **4,988 SF**



LOCATION

489 FIFTH AVENUE

Entire 34th Floor (Penthouse): **4,988 SF**

