



# 70 East 55<sup>TH</sup> Street

*Between Park & Madison Avenues*

**SUBLEASE  
THROUGH 12/31/23**

**Floor**  
Entire 12th

**Size**  
5,835 Square Feet

**Possession**  
Immediate

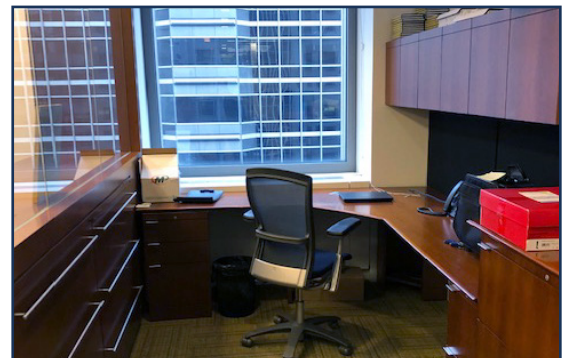
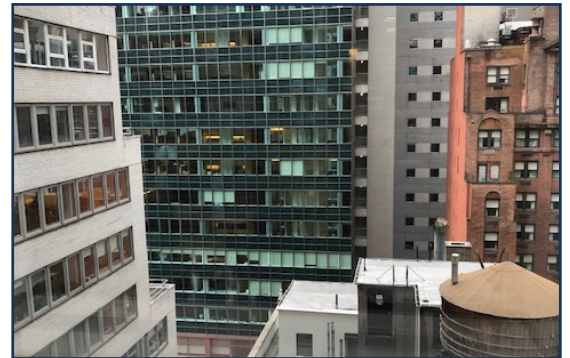
**Rental**  
Upon Request

## SPACE FEATURES

- Recent, executive level installation in move-in condition
- Extensive use of wood, glass and stone finishes
- Space is offered fully furnished
- Ideal for Financial Services firms, Law firms, Private Foundations or other quality office users
- Large conference room
- Full pantry
- Windows on three sides
- Tenant controlled HVAC
- Financially secure sublessor

## BUILDING FEATURES

- Spectacular boutique office building
- Beautiful, attended lobby with 24 hour concierge
- Brand new destination elevators
- Convenient location





# 70 East 55<sup>TH</sup> Street

*Between Park & Madison Avenues*

