

261 Fifth Ave, suite 2200

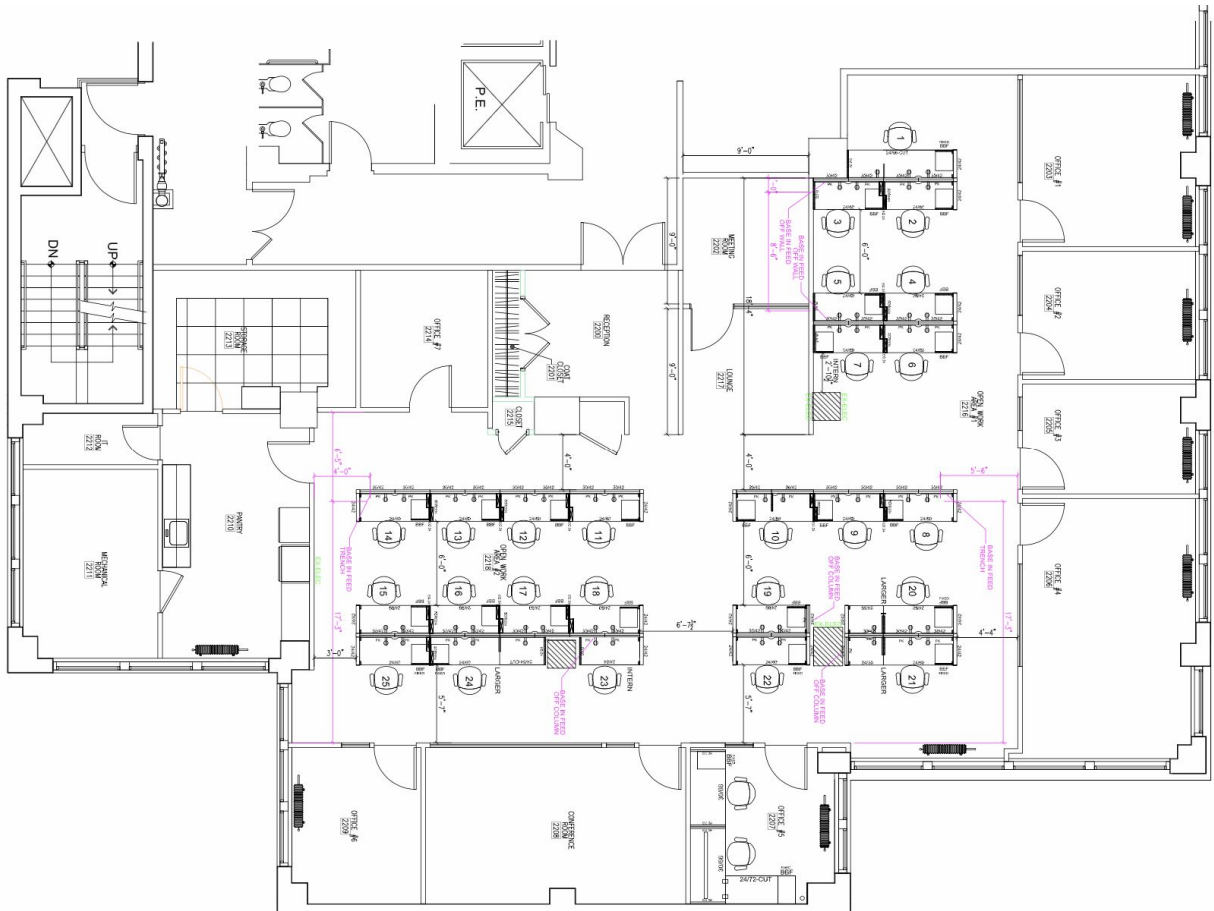


Size: 6,011 RSF
Term: to 7/31/2026
Asking Rent: Inquire

Layout:

- 6 windowed offices
- 1 interior office
- Windowed conference room
- Small interior meeting room
- Lounge area
- Open area currently set up with 24 desks
- Reception
- Large full pantry
- IT closet

Modern elegantly designed space with high ceilings, wood flooring, glass partitions, wet pantry with SS appliances. Windows on 3 sides with open views and an abundance of natural light. Furniture, fixtures and equipment available.



261 Fifth Ave, suite 2200

