

1375 Broadway | Sublease Opportunity

Between 38th and 39th Streets



space for sublease:

Availability:

Space:	Partial 6th floor
Total Size:	8,674 RSF
Possession:	Immediate
Term:	July 30, 2024
Rental Rate:	Upon request

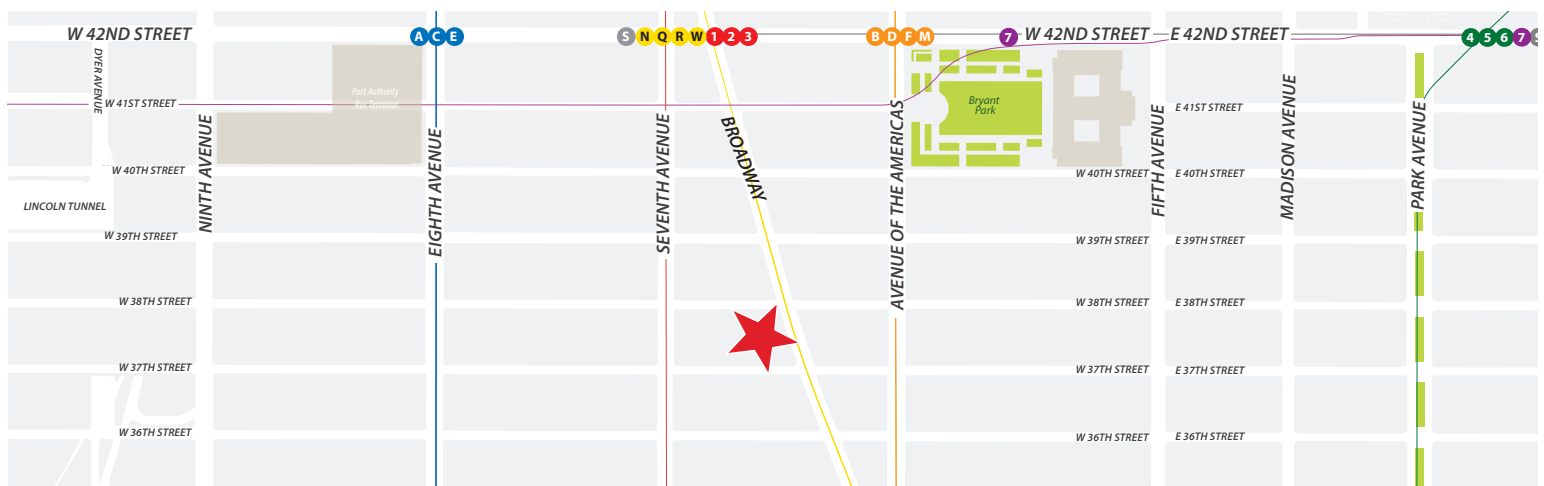
Space Highlights:

- New construction
- Move-in condition
- Open ceiling and concrete flooring
- Sublandlord will provide alterations, if required
- Views in three directions, including Central Park
- Tenant controlled air-cooled package units

Building Highlights:

- Located on the Broadway Pedestrian Plaza
- Fully renovated office building
- Close proximity to Penn Station, Port Authority, Grand Central Terminal, PATH and the following subway lines:

A C E 1 2 3 7 B D F M N Q R W S

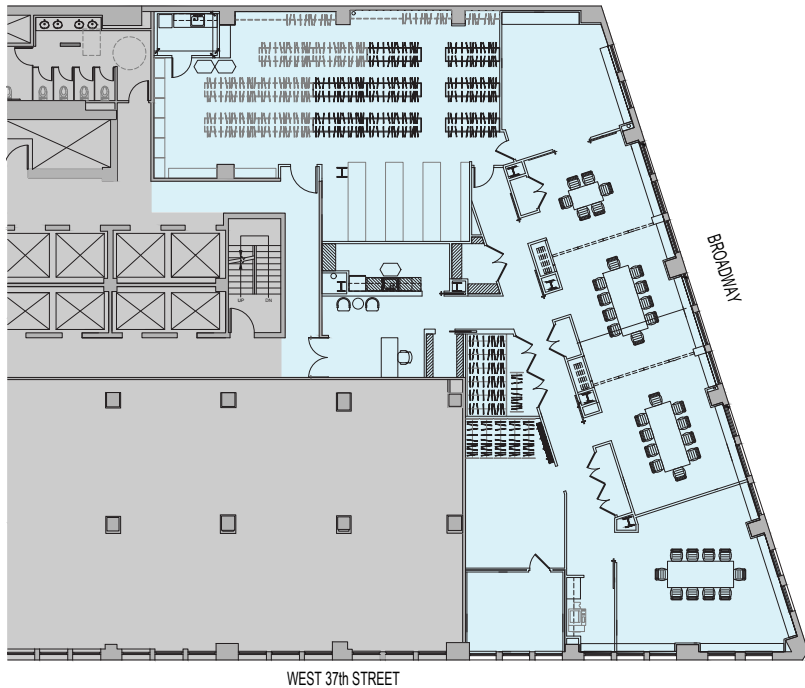


1375 Broadway | Sublease Opportunity

Between 38th and 39th Streets

Partial 6th Floor | 8,674 RSF

Existing Floor Plan



Proposed Floor Plan



Interior Space Images

