

BEST LOW COST NEWLY BUILT GRAND CENTRAL SUBLEASE; FLEXIBLE SIZE, TERM AND PRICE



Space Profile

Space: **Entire 6th: 22,628 RSF**
Entire 7th: 22,374 RSF
Partial 9th: 8,701 RSF
Total: 53,703 RSF

Floors can be subleased individually
or together

Rate: **Upon request**

Availability: **Immediate**

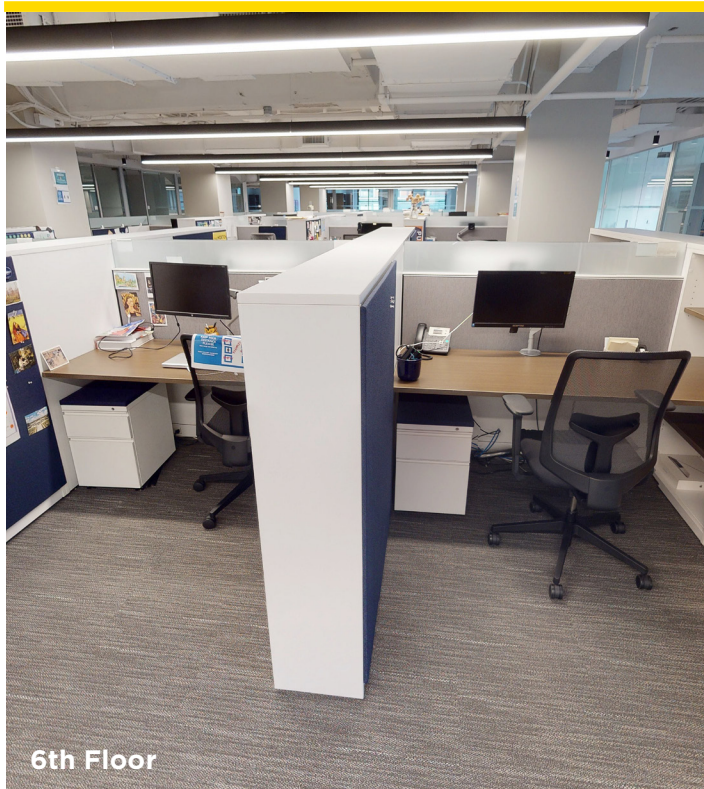
Term: **Flexible (Max term through February 2039)**

Key Highlights

- Class "A" asset
- Across the street from Bryant Park.
- Short walk to Grand Central, Penn Station and Port Authority
- Institutional Sublandlord and Landlord
- Turn-key / fully furnished sublease
- Recently built installations that includes a mix of private offices and open areas
- Proximate to the B, D, F, M, 7 trains at Bryant Park and the 4, 5, 6 and S trains at Grand Central Terminal



SUBLEASE 500 Fifth Avenue | Fifth Avenue at **Bryant Park**

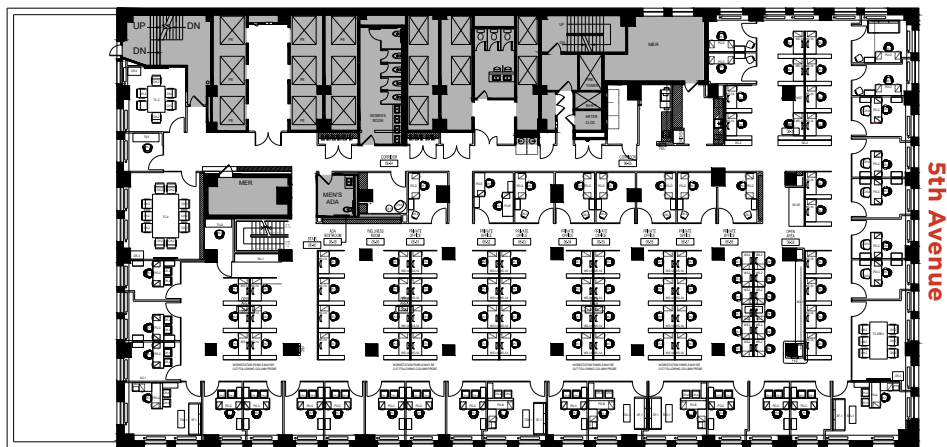


SUBLEASE 500 Fifth Avenue | Fifth Avenue at **Bryant Park**



SUBLEASE 500 Fifth Avenue | Fifth Avenue at **Bryant Park**

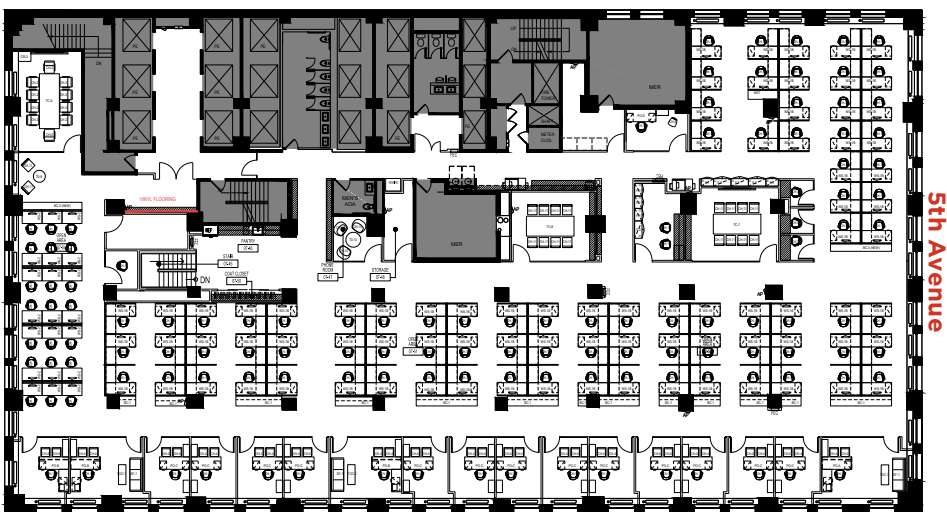




Space Overview Entire 6th floor

- 37** offices
- 64** workstations
- 3** conference rooms
- 1** phone booth

[Click here for 6th floor virtual tour](#)



Space Overview Entire 7th floor

- 18** offices
- 100** workstations with partitions
- 3** conference rooms
- 4** huddle rooms

[Click here for 7th floor virtual tour](#)



Space Overview Partial 9th floor

- 6** offices
- 43** workstations with partitions
- 2** conference rooms

[Click here for 9th floor virtual tour](#)