

# SHORT TERM HIGH-END FINANCIAL SERVICES SUBLEASE

Furnished Plug and Play Sublease in the GM Building



## Space Profile

Floor: **Partial 21st Floor: 9,116 RSF**  
**Entire 18th Floor: 9,270 RSF**  
**Total: 18,386 RSF**

Rent: **Negotiable**

Possession: **Immediate**

Term: **Through October 30, 2023**

## Key Highlights

- Unique opportunities to sublease in the GM building on a short-term basis
- Renovated building plaza on Fifth Avenue, featuring a brand new Apple Store
- **Partial 21st Floor:** Unit is built with a reception area, 3 conference rooms off reception (one 14-person and two 8-person), 8 northern facing perimeter offices (2 of which are executive sized), 2 internal offices, a wet pantry and open area for 11 workstations (can be further densified)
- **Entire 18th Floor:** Full floor opportunity with a combination of conference rooms off reception, northern facing perimeter offices and open area. Floor is in the process of being upgraded to a high standard and delivered with brand new furniture and a new pantry.
- Both units will be delivered wired and furnished and feature Central Park views and double glass door entryways directly off the elevator lobbies
- Units can be subleased separately



**SUBLEASE** 767 Fifth Avenue | In the Heart of the Plaza District



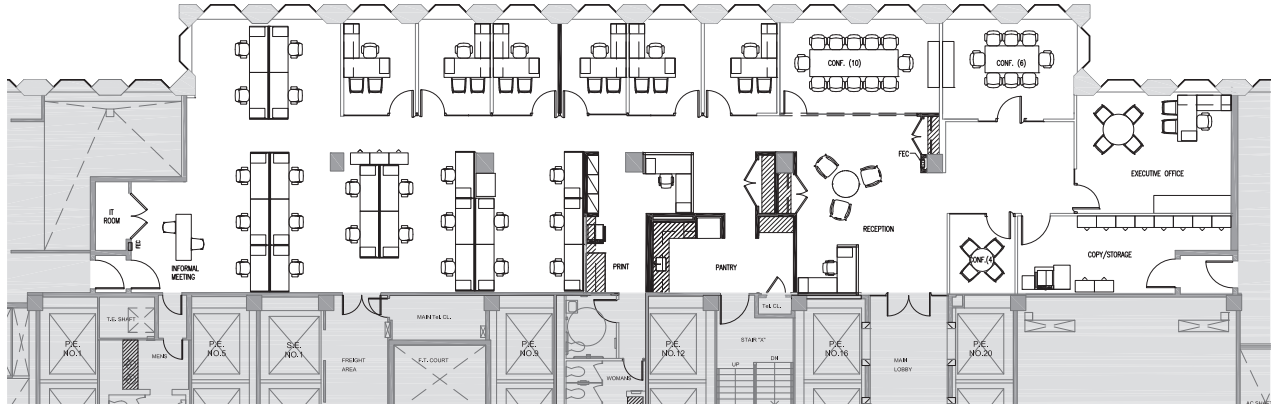


**SUBLEASE** 767 Fifth Avenue | In the Heart of the Plaza District





## Entire 18th Floor - Post-Renovation Conditions (Renovations underway)



## Partial 21st Floor - Existing Conditions

