



Beautifully Built Space for Lease

Plug-and-Play Opportunities at 680 Fifth Avenue

680 Fifth Avenue

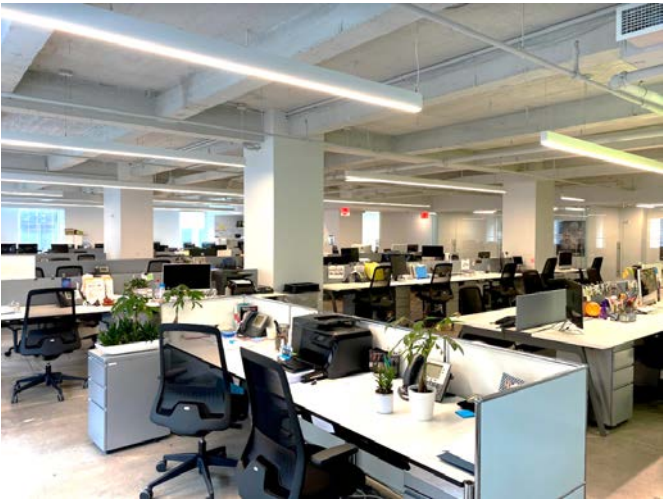
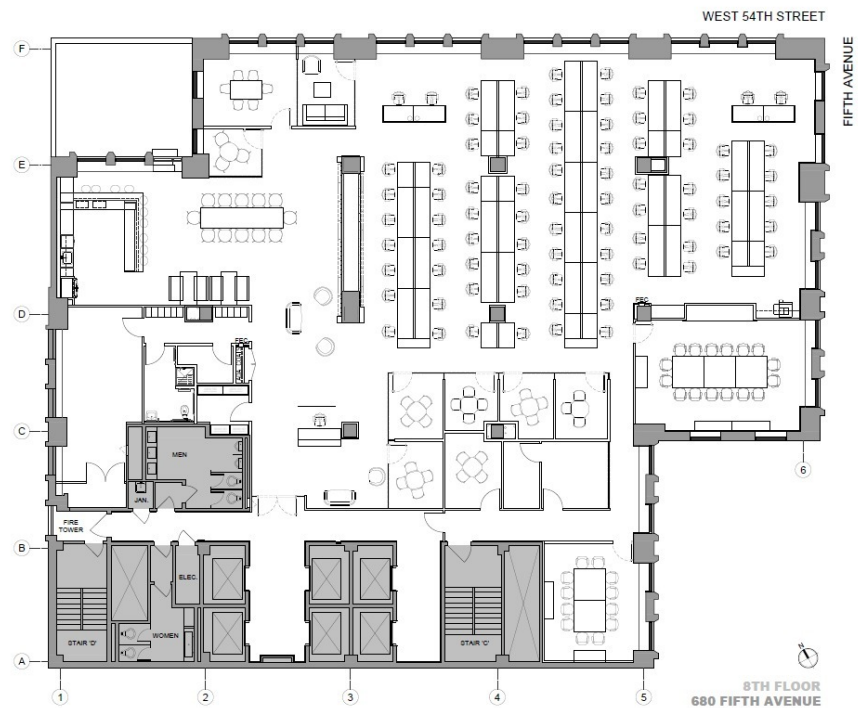
- Boutique full floor opportunities with large outdoor terraces
- Prime Plaza District location within close proximity to Central Park
- Excellent natural light and views

Space Details

- Entire 8th Floor – 13,185 RSF
 - Creatively built installation with 8 office / breakout rooms, 2 conference rooms, café style pantry, and open area for up to 82 workstations
 - Private usable terrace
- Entire 10th – 9,400 RSF
 - High-end built installation consisting of 1 large boardroom, 1 small conference room, executive corner office, 7 office / break out rooms, and open area for up to 20 people
 - Large wraparound usable terrace
- Possession is immediate
- Flexible term
- Furniture available

680 Fifth Avenue | Entire 8th Floor

13,185 RSF



680 Fifth Avenue | Entire 10th Floor

9,400 RSF

