

60 EAST 66TH STREET

UPPER EAST SIDE

Between Madison and Park Avenues

AVAILABLE SPACE

Penthouse	1,338 RSF
Partial 5th floor Suite 5A	875 RSF
Partial 5th floor Suite 5B	983 RSF
Partial 3rd floor Suite 3B	923 RSF
Entire 2nd floor	1,815 RSF
Partial 1st floor Suite 1A	582 RSF
Partial 1st floor Suite 1B	918 RSF

POSSESSION

Immediate (all spaces)

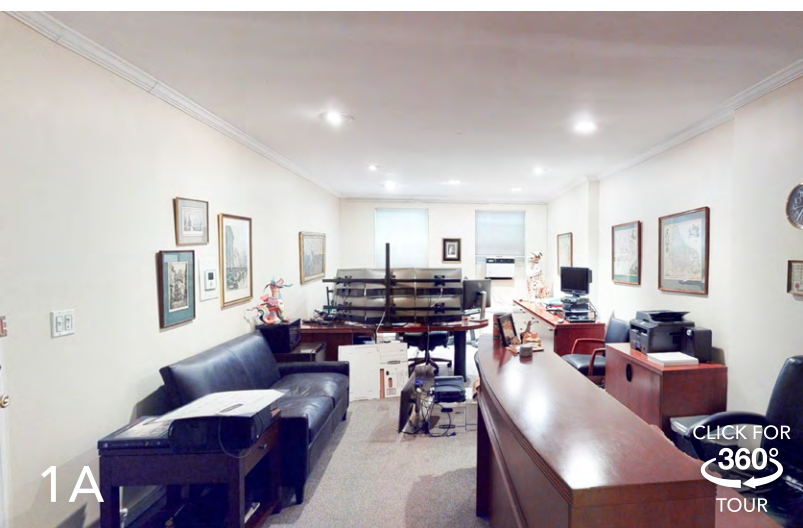
BUILDING DESCRIPTION

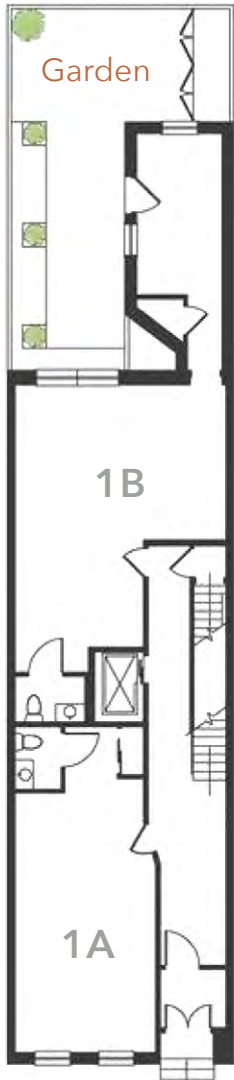
- Elegant townhouse available for commercial use
- Video/intercom secured building
- Within two blocks of Central Park
- Several units come with outdoor areas such as garden, terrace and deck
- Recently renovated elevator cabs and common corridors

TRANSPORTATION

4 5 6 F N Q R W

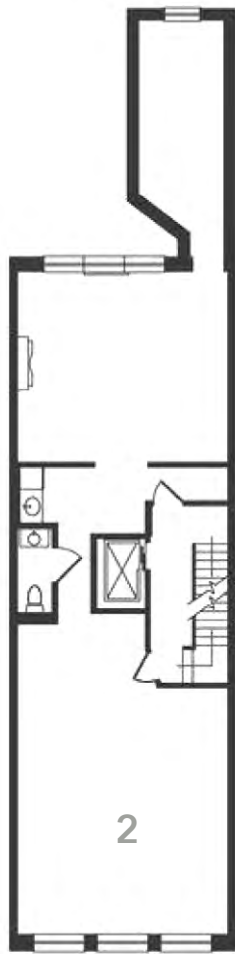






First Floor*

1A 582 RSF
1B 918 RSF



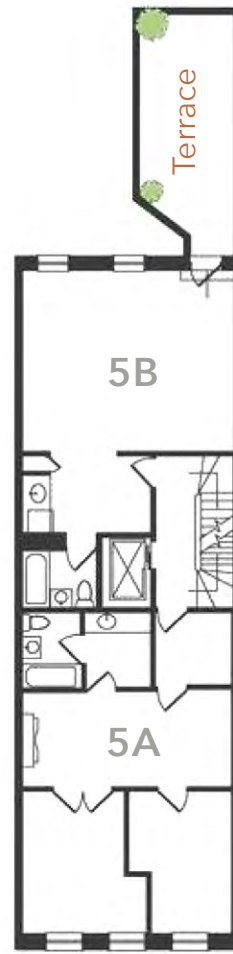
Second Floor

1,815 RSF



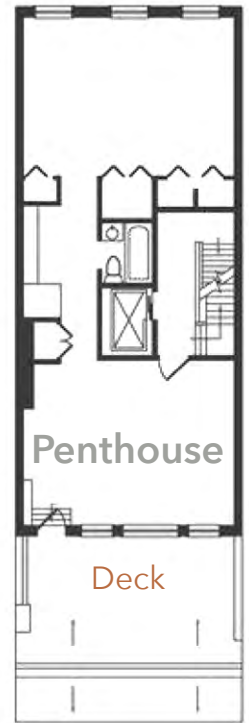
Third Floor

3B 923 RSF



Fifth Floor*

5A 875 RSF
5B 983 RSF



Penthouse*

1,338 RSF

* Includes outdoor space