

# 150 East 58th

**Sublease Opportunity  
with Central Park Views**



## LEASING OPTIONS

---

### Partial Floor

**6,000** RSF

Partial 37th

### Single Floor

**12,119** RSF

Entire 37th or 38th Floor

### Full Block

**24,238** RSF

Entire 37th + Entire 38th

---

## SPACE DETAILS

### ENTIRE 37TH

- Full floor consisting of a reception area, 15 windowed offices, 2 (12) person conference rooms, 2 break-out rooms, 2 pantries, substantial storage space, and open area for 10 workstations.
- Oversized windows throughout providing great natural light and Central Park views.
- Interconnecting staircase to the 38th floor.

### ENTIRE 38TH

- Full floor opportunity consisting of a grand reception area, 1 (28) person board room, 1 (16) person conference room, 1 (12) person conference room, 11 windowed offices, 2 pantries, substantial storage and filing space, and open area for 8 workstations.
- Oversized windows throughout providing great natural light and Central Park views.
- Interconnecting staircase to the 37th floor.
- Extremely spacious offices.

POSSESSION

**IMMEDIATE**

TERM

**THRU 4/30/2024**

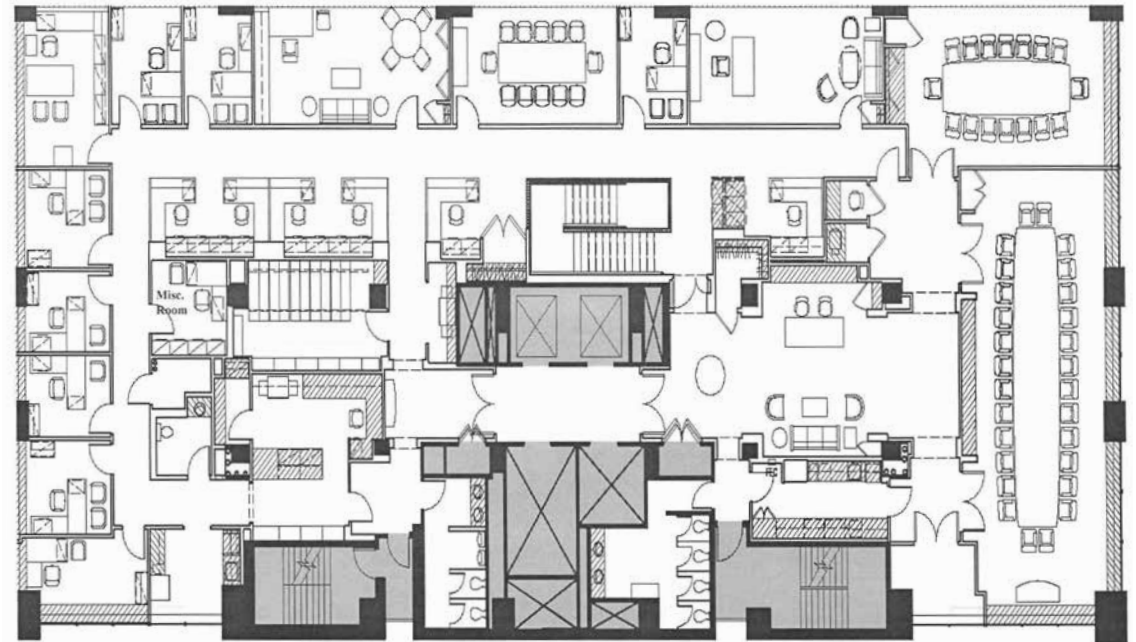
---

**Partial 37th Floor**  
**6,000 RSF**

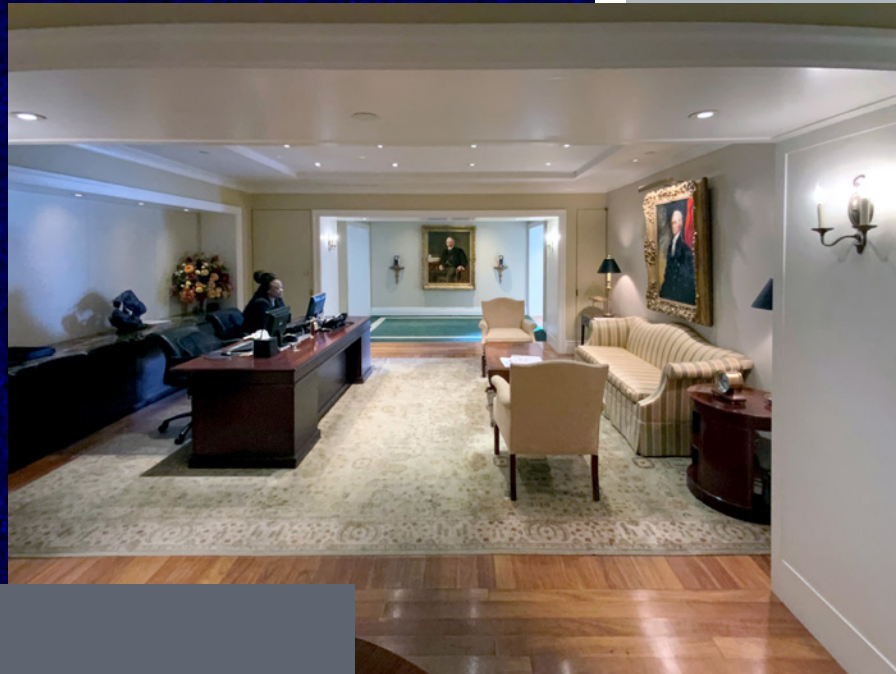
**Entire 37th Floor**  
**12,119 RSF**



**Entire 38th Floor**  
**12,119 RSF**







38th Floor











37th Floor

