



461 Park Avenue South

*Prime Positioning: Sublease at
Park Avenue South's Most Connected Address*

Partial 8th Floor:

1,500 RSF

461 Park Avenue South

Date Available:

July 2026

Term:

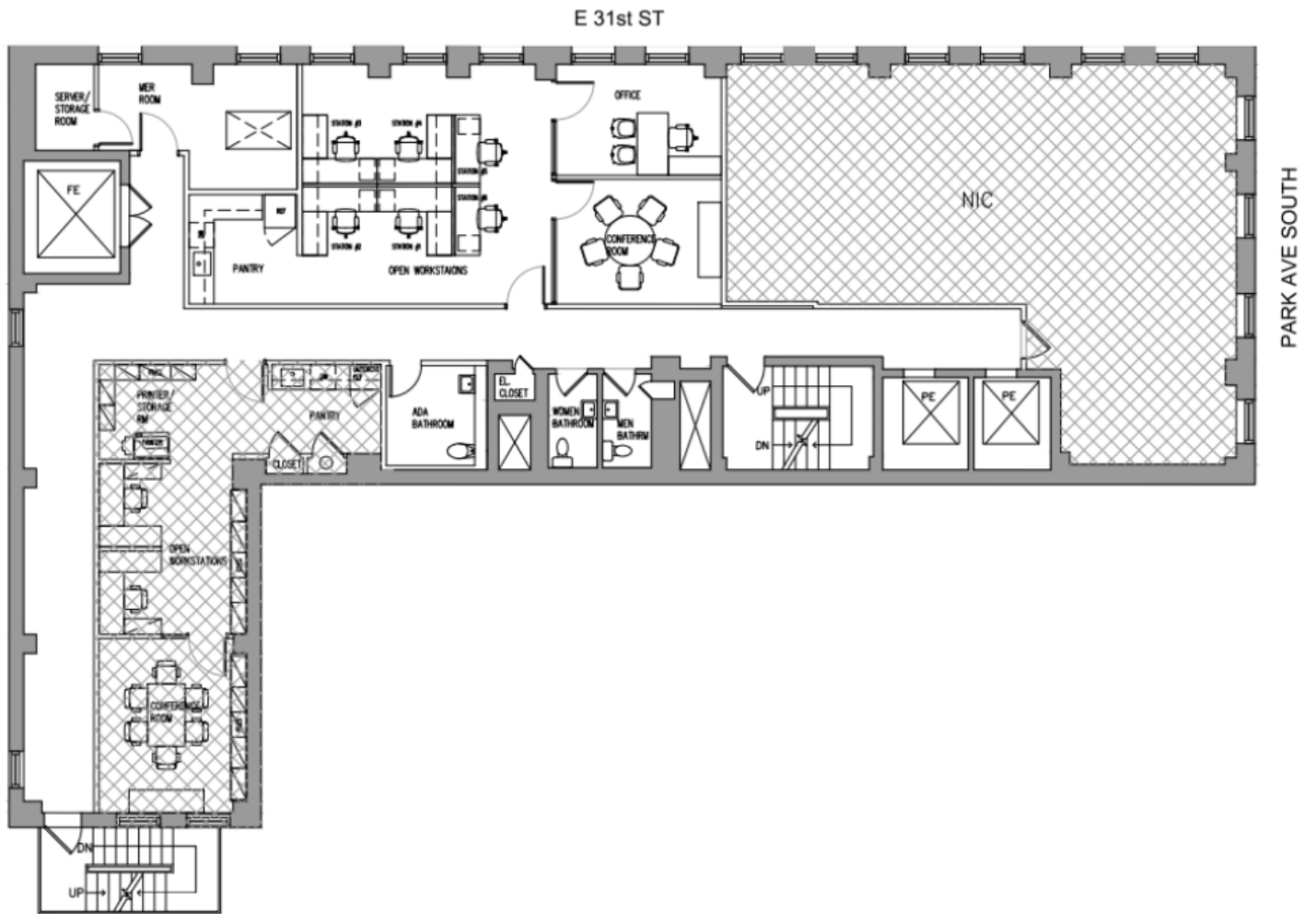
March 2027

Availability Details

- Recently built space with 1 office, 1 meeting room, open area and pantry.
- Short-term plug and play sublease with the possibility for a direct extension.
- Direct elevator presence.
- Boutique building positioned at the intersection of Midtown and Midtown South.
- Recently renovated building lobby and elevators.

Partial 8th Floor: As-Built Plan

For Sublease



Space Photos

For Sublease

