



# CHELSEA ARTS CENTRE

- Prime West Chelsea location between West 24th and 25th Streets — steps from The High Line and Hudson River Park
- Building features 24/7 access, operable windows, 3 elevators (1 oversized), tenant-controlled HVAC, High quality interior finishes, and 24-hour freight elevator
- Walking distance to Hudson Yards, Chelsea Waterside Park, Chelsea Dog Park, Pier 62 Skatepark, Pier 62 Carousel, Hudson River Park, Pier 63, The High Line, Chelsea Piers, and Little Island at Pier 55

**210 11<sup>TH</sup> AVE**

## LAST AVAILABLE SUITE

### Current Availabilities

Unit	Size	Possession
Suite 504:	1,574 rsf	August 2025
- 5 Windows providing south and east exposure; wide open space with (1) office		

- Comments:
- Boutique building offering flexible lease terms - Good city and river views
  - All units feature polished concrete floors, operable windows, and exposed ceilings
  - Most spaces are wide open with creative lighting and pantry
  - Some spaces have offices and conference rooms
  - Prime Chelsea neighborhood - Hudson Yards vicinity
  - Spectrum (formerly Time Warner) & Verizon data/telecom
  - Bike Room with storage for helmets and bike air pump

### Join Fashion Tenants such as:

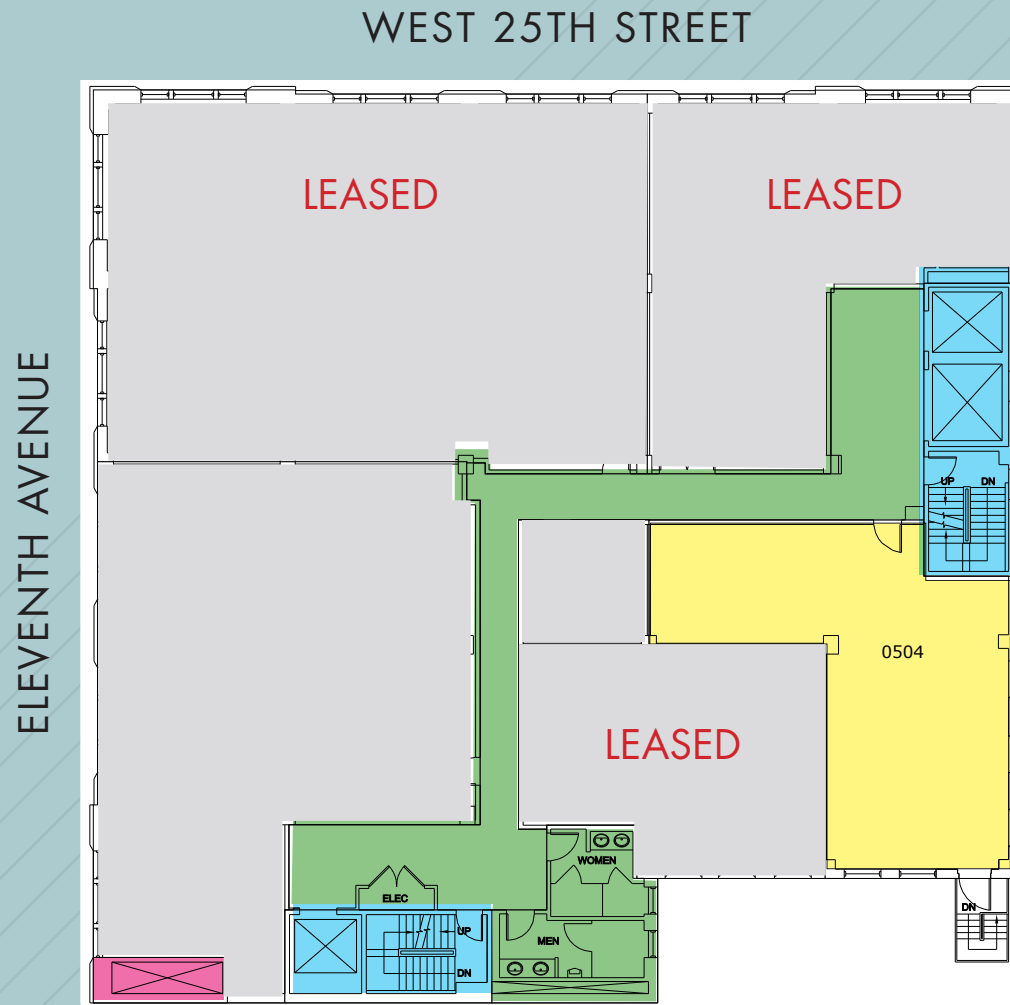
Marc Cain, Gabriela Hearst, Jonathan Simkhai, Isabel Marant, Mackage, Rainbowwave  
Citizens of Humanity, Michael Stars, EFG Apparel

### Join Art & Design Tenants such as:

Sears-Peyton Gallery, Amsterdam Whitney International Fine Art, Craig Greenberg Architects, Moleskin America  
Betsy Senior Fine Art, Minagawa Art Lines, Bossa Furniture, Team Laird, Fernando Jorge

## 210 ELEVENTH AVENUE

Suite 504: 1,574 rsf - 5 Windows providing south and east exposure; wide open space with (1) office

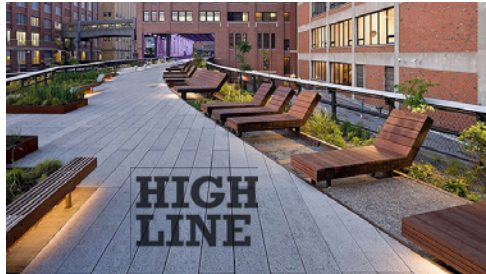


(for descriptive purposes only; not to scale.)





Hudson River Park



High Line



Hudson Yards