

SUBLEASE

BUILT  
SPACE

PLUG  
&  
PLAY

1,823 SF

# 630 FIFTH AVENUE

Between 50<sup>th</sup> & 51<sup>st</sup> Streets



## Availability:

- Partial 24<sup>th</sup> Floor
- **Total: 1,823 SF**
- Availability: Immediate
- Asking Rent: Negotiable
- Term: Thru April 2029

## Space Features:

- Fully furnished and wired
- 5 Workstations (room to densify)
- 1 Large Conference Room
- Pantry
- Lounge Area
- Great light and views of the rink / tree

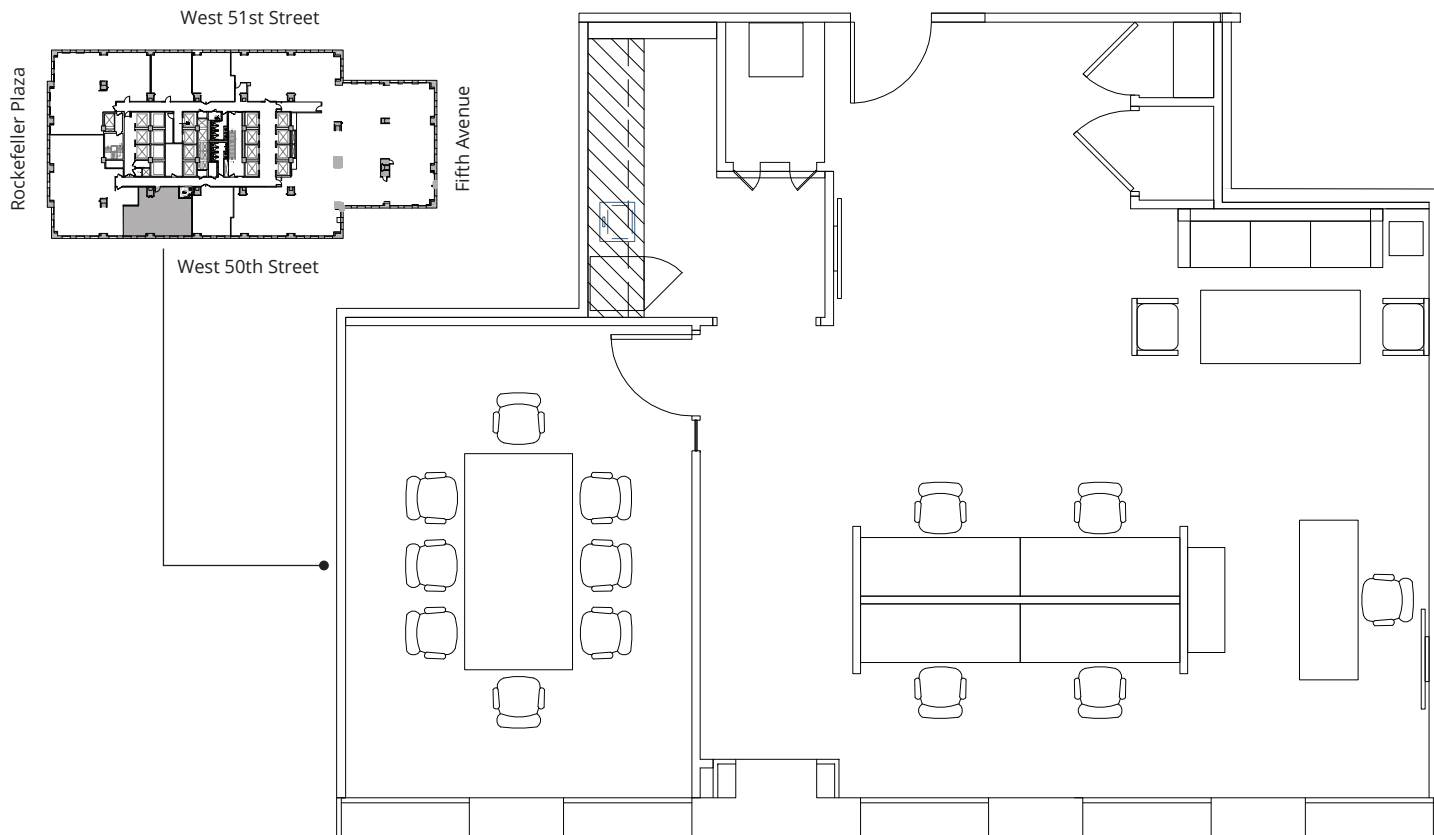
## Building Features:

- 24/7 access
- Access to Rockefeller Center amenities
- Restaurants, Cafés and Shops
- Direct access to the subway

SUBLEASE

# 630 FIFTH AVENUE

Between 50<sup>th</sup> & 51<sup>st</sup> Streets



Partial 24<sup>th</sup> Floor: 1,823 SF

