



In the Heart of NoMad

276 FIFTH AVENUE OFFICE SUITES

Originally opened in 1892 as the Holland House Hotel, this building was designed by architects George Edward Harding & Gooch boasting 350 rooms of palatial elegance emanating both social and technological ambitions of Gilded Age New York. The Holland House lost its luster in changing economic realities and was converted to commercial use in 1920. The building's limestone facade offers a surviving glimpse into the grandeur that once defined its era on Fifth Avenue. Today the building features office suites small and large accommodating teams from 10 to 50 plus with organic growth potential and onsite property management and services.

BUILDING FEATURES

This 11-story corner office building at 276 Fifth Avenue sits in a prime NoMad spot at Fifth Avenue and 30th Street. It offers classic, modern, and creative office spaces from 1,500 to 11,000 RSF, with a freshly updated lobby, grand staircase, new windows, and fully furnished, wired suites ready for move-in.

Building Highlights

Abundance of operable windows

Renovated Suites of varying sizes with hardwood flooring, branding opportunity, new pantries; soft seating, conference, huddle and social areas

24/7 access with attended lobby and security

Tenant Controlled A/C; often ductless

Exceptional proximity to public transportation

On site property management office/services for hands on delivery

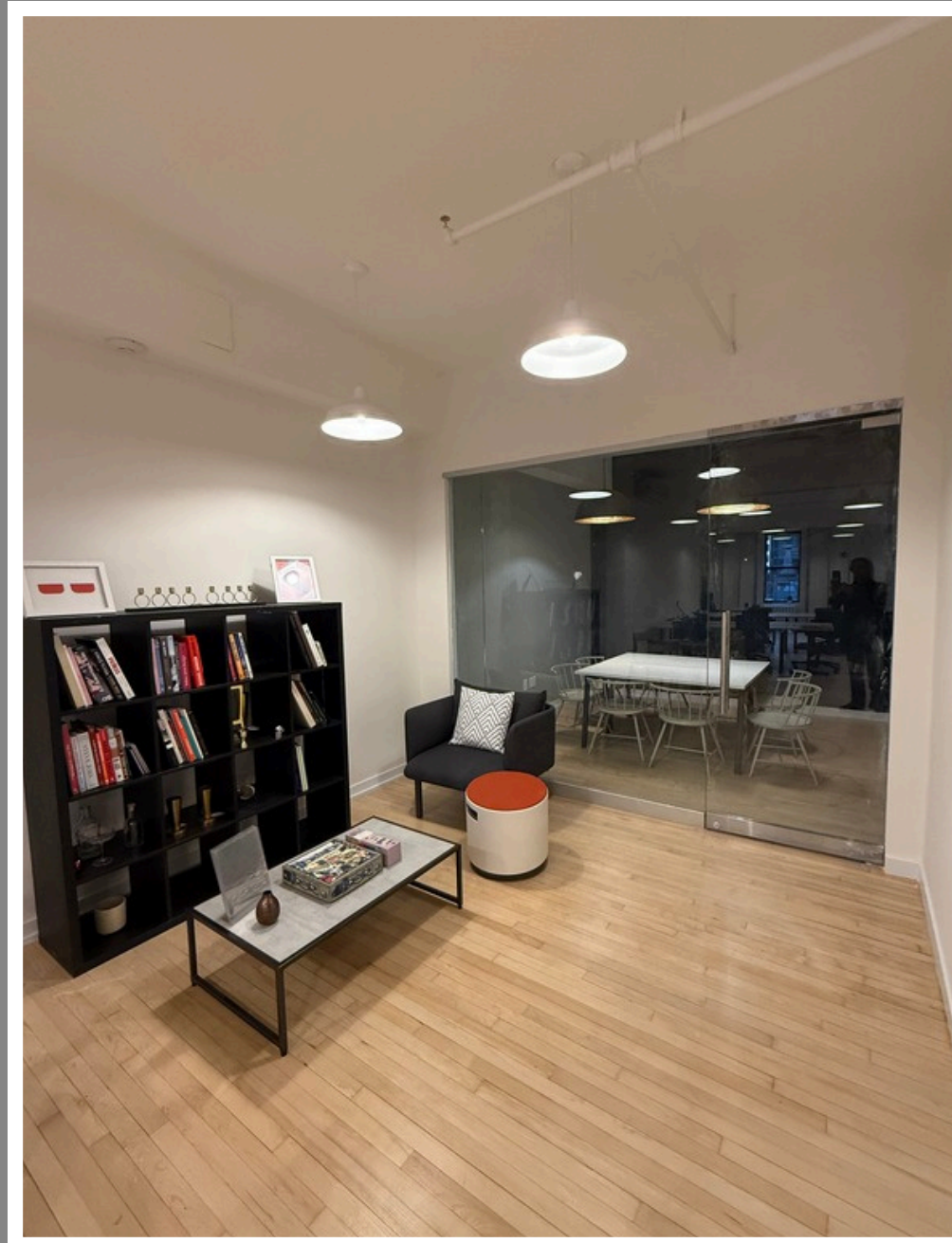
Smart key access and sub-metered electric



SUITE 501

Just Completed - First Time offered

1,998 RSF
Base Rent: \$63 PRSF



1 Conference Room



Seating/Dining area

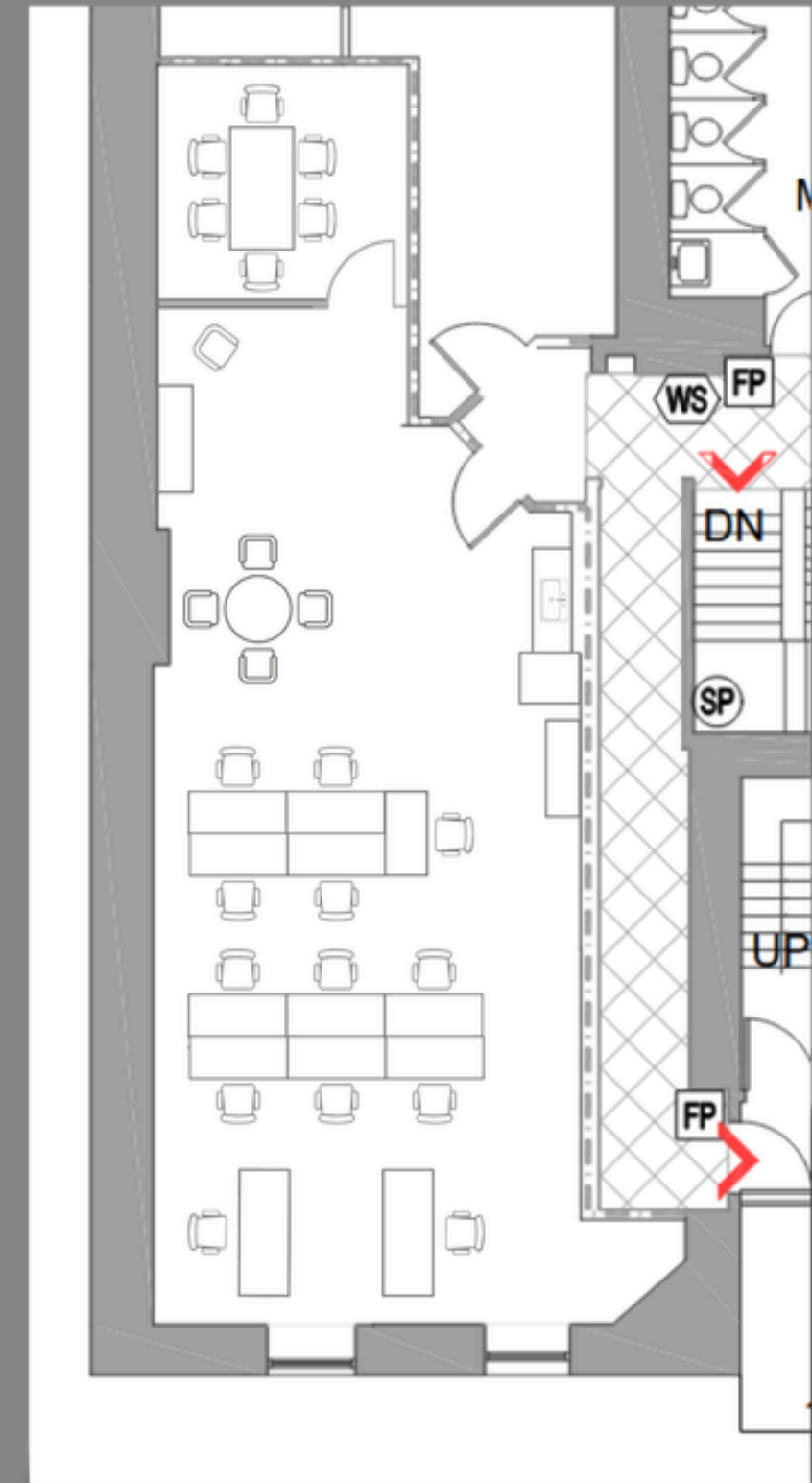


13 plus desks



EXISTING CONDITIONS FLOOR PLAN

- Exceptional south facing Unit just completed
- Set up as largely open space with soft seating, cafe table, cafe style pantry and open desk space for up to 15 with hardwood flooring
- 1 Conference room seating 8
- Furnished with 13 bullpen desks/chairs
- Cafe style pantry
- Prominent glass entry
- Tenant controlled ductless HVAC
- Smart phone keyless entry



NOT TO SCALE