



**FIFTY
BROAD**

FOR LEASE

10,682 SF
AVAILABLE

50 BROAD ST.
NEW YORK, NY
PARTIAL PENTHOUSE

BUILDING HIGHLIGHTS



SPACE

PARTIAL PENTHOUSE
10,682 SF



POSSESSION

ARRANGED



TERM

3-10 YEARS

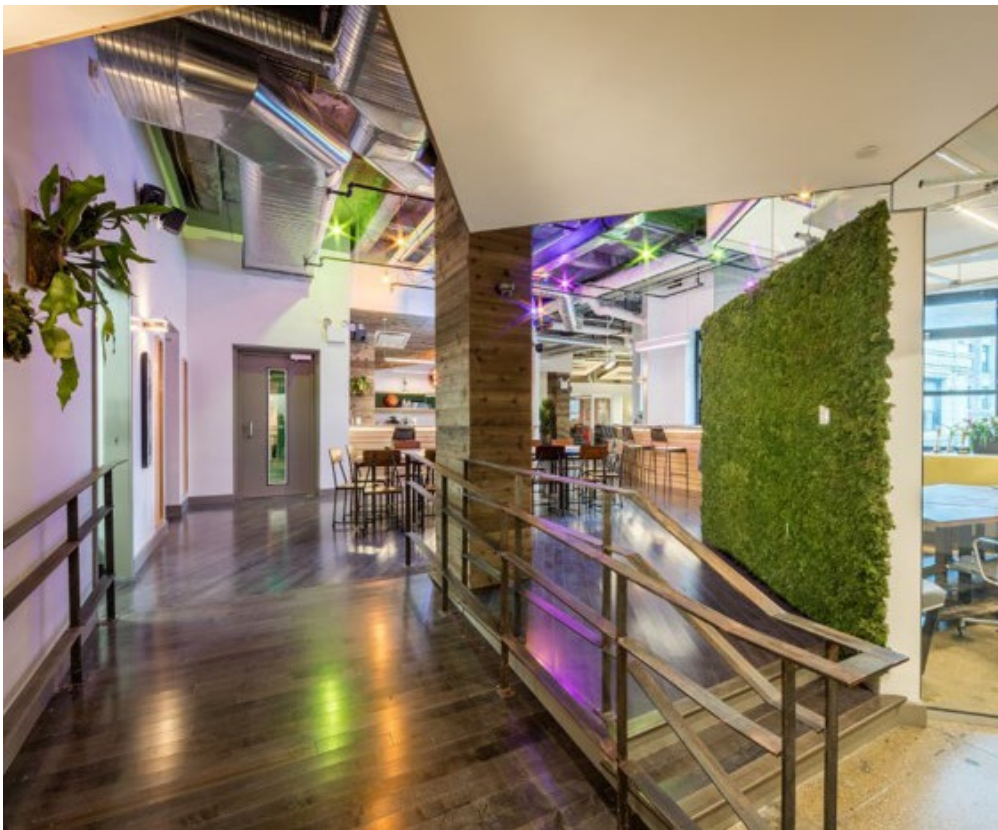
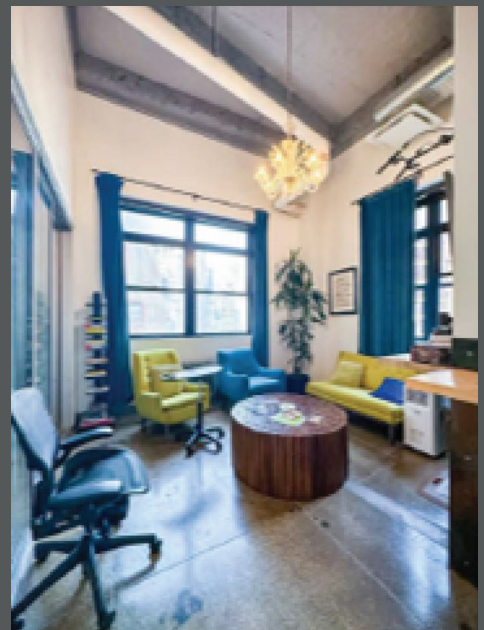
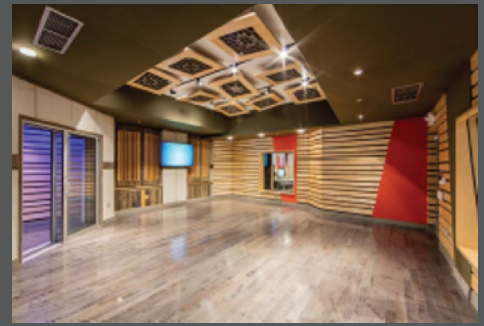


RENT

UPON REQUEST

COMMENTS

- Former sound studio/podcasting space featuring partially raised floors, eight fully sound proofed rooms, six private offices, and an open area accommodating 15-20 people.
- The layout offers abundant power and HVAC capacity throughout.
- The space includes 14-foot ceilings and windows on three sides providing excellent natural light and expansive views.





island