

505
FIFTH



**First time availability
since building inception.**

**Entire 26th floor - 8,471 RSF
with expansive terrace
Entire 17th floor - 11,153 RSF**



Exact Space. Inventive design



Neighborhood

505 FIFTH is located at the intersection of 42nd Street and Fifth Avenue just next to Bryant Park. This ideal location provides easy access to shops, restaurants, and hotels in one of New York City's most vibrant neighborhoods.

/ BRYANT PARK

Across the street

/ GRAND CENTRAL TERMINAL

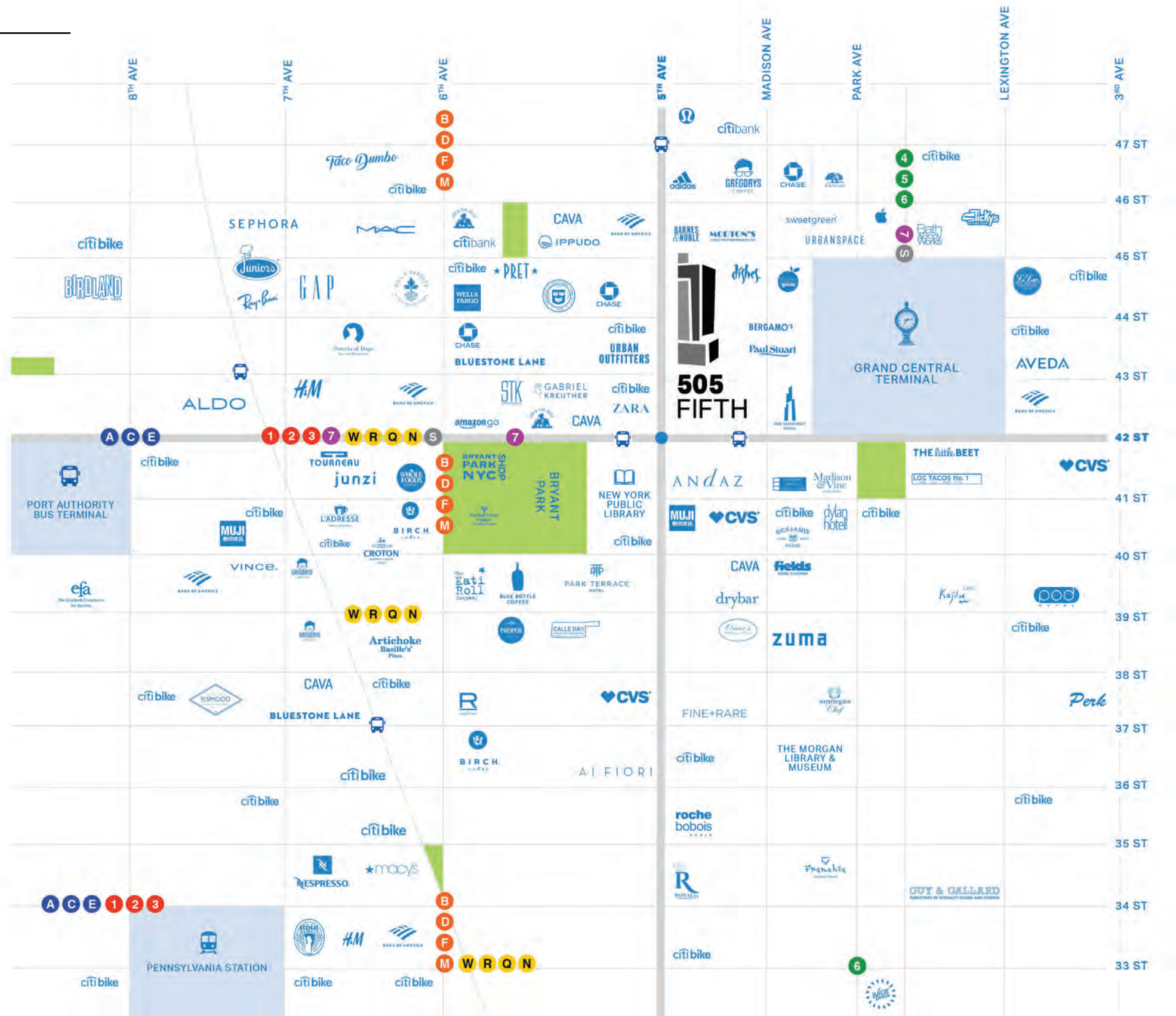
75 steps

/ PENN STATION

10 minutes

/ CITI BIKE

Multiple stations within a block



Transportation

NEW JERSEY

QUEENS

LaGuardia Airport

8.7 miles
25 minutes via car
48 minutes via train

Grand Central Terminal

0.4 miles
5 minutes on foot

Port Authority

0.6 miles
12 minutes on foot

505 FIFTH

Queens Midtown Tunnel
42 St.

/ LONG ISLAND CITY

2.5 miles
12 minutes via car
15 minutes via subway

Lincoln Tunnel

Penn Station

0.8 miles
10 minutes on foot

/ GREENPOINT

3.4 miles
15 minutes via car
25 minutes via subway

JFK Airport

15.2 miles
47 minutes via car
57 minutes via train

/ HOBOKEN

4.4 miles
23 minutes via car
30 minutes via subway/PATH

/ WILLIAMSBURG

6.4 miles
24 minutes via car
27 minutes via subway

/ JERSEY CITY

6 miles
33 minutes via car
56 minutes via bus and/or subway/PATH

Holland Tunnel

BROOKLYN

/ DUMBO

5.1 miles
30 minutes via car
26 minutes via subway

/ PARK SLOPE

9.9 miles
37 minutes via car
37 minutes via subway

Newark Airport

16.1 miles
33 minutes via car
59 minutes via train

Convenience, Exactly

/ COMMUTE
effortlessly.

/ REFRESH
at Bryant Park.

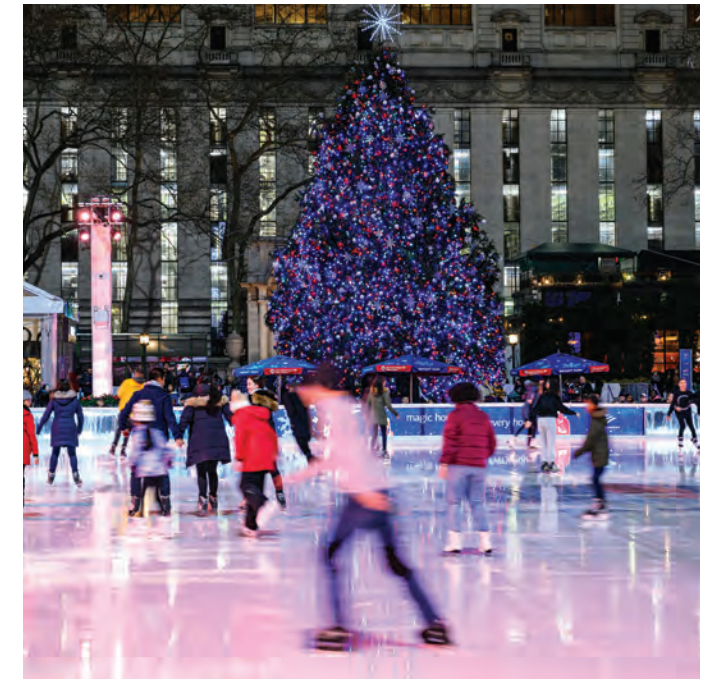
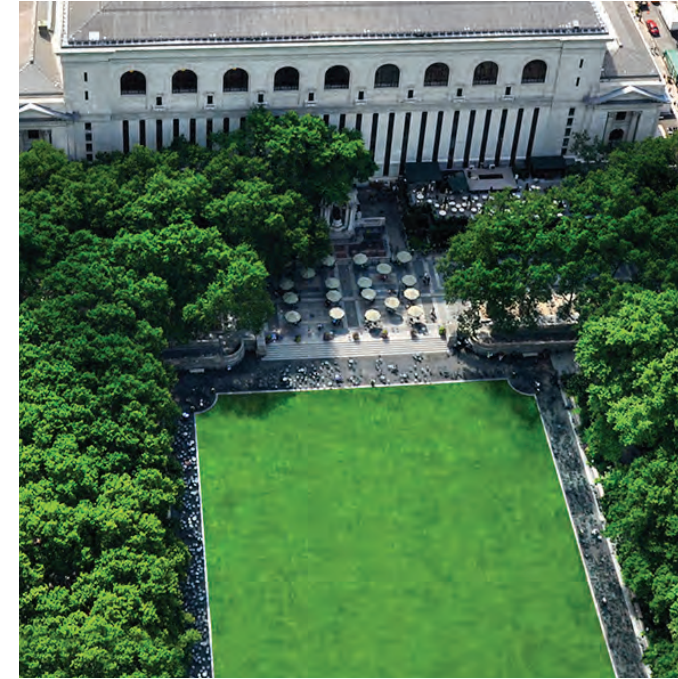
/ UNWIND
at local bars.

/ EXERCISE
around the corner.

/ SHOP
for work or for play.

/ INTERACT
with culture and nightlife.

Everything you need
within a few steps.





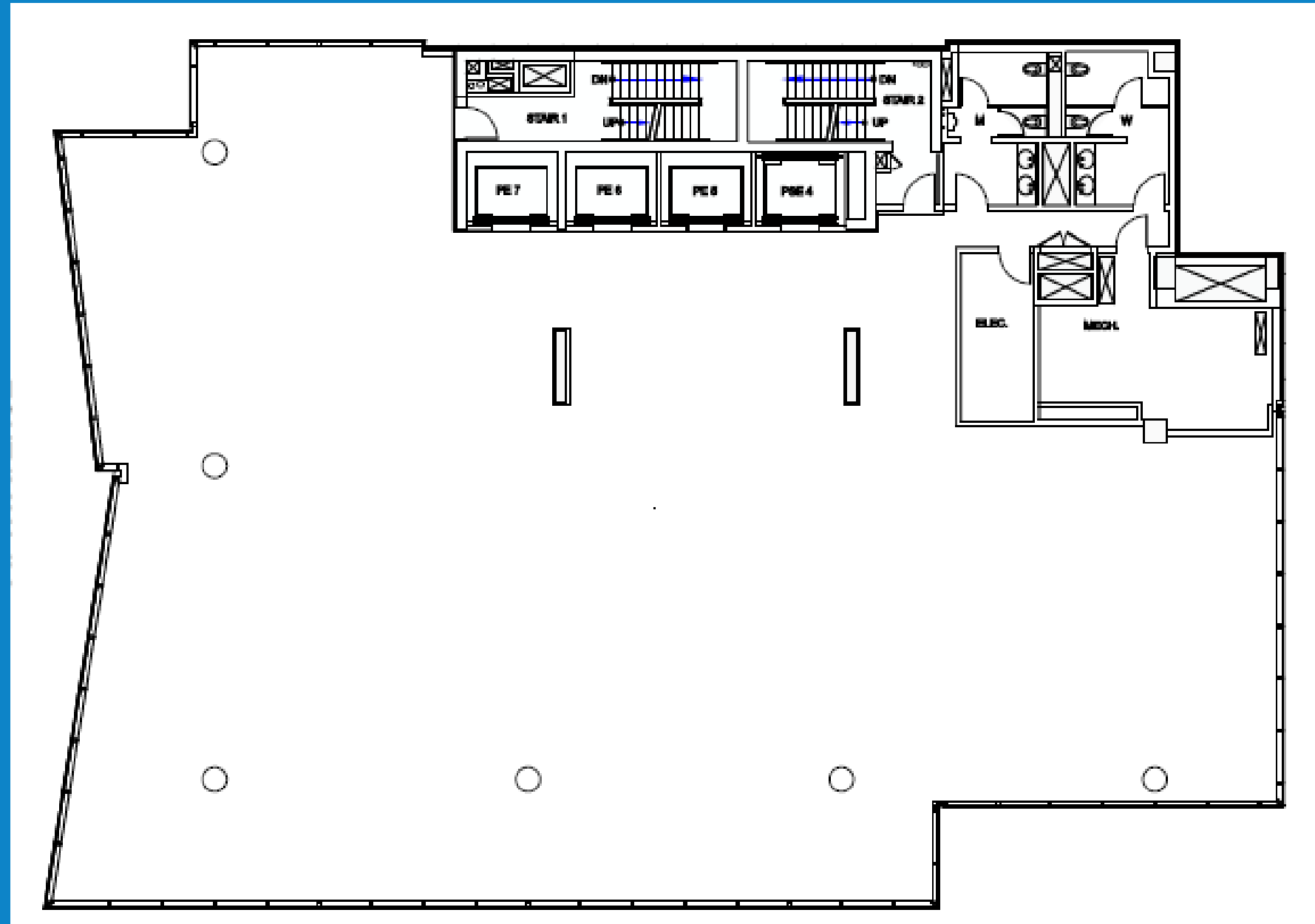


INCREASED FLEXIBILITY

- / Side-loaded core with column-free zones ideal for creative and open floor plans and design
- / Corner offices with multiple terrace opportunities
- / Floor plates from 7,683 to 11,000 RSF



5TH Ave.



42ND Street