



THE

STEIHL

BUILDING

33 West 19th Street

BETWEEN 5TH & 6TH AVENUES

Office Space Available



AVAILABILITIES

2nd Floor

Built & Furnished

12,000 RSF

5th Floor

Built & Furnished

12,000 RSF

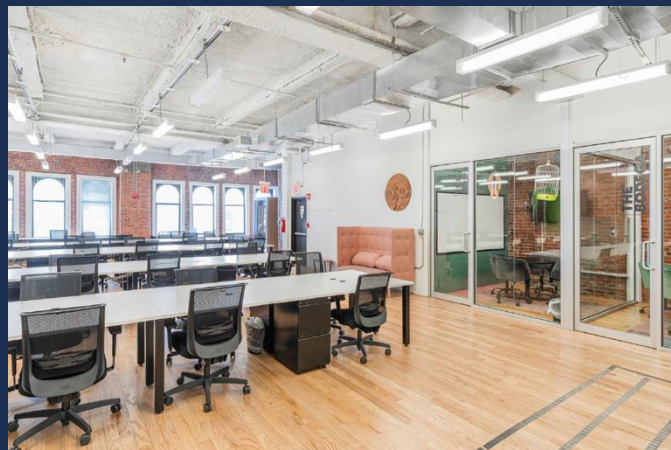
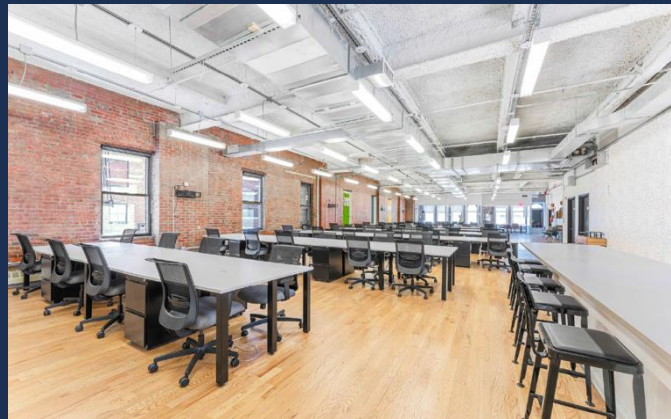
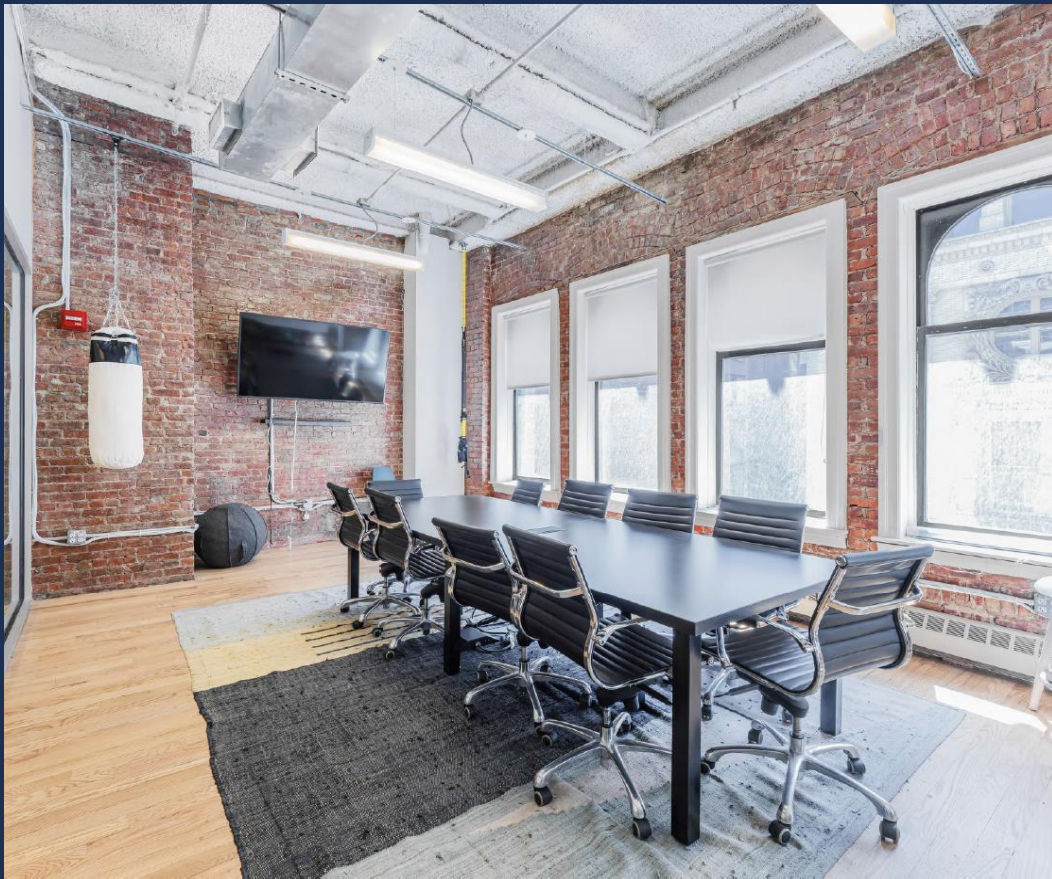
6th Floor

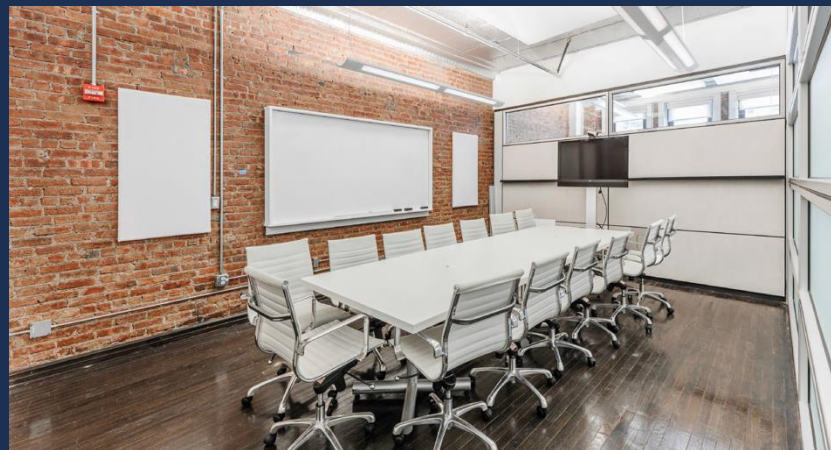
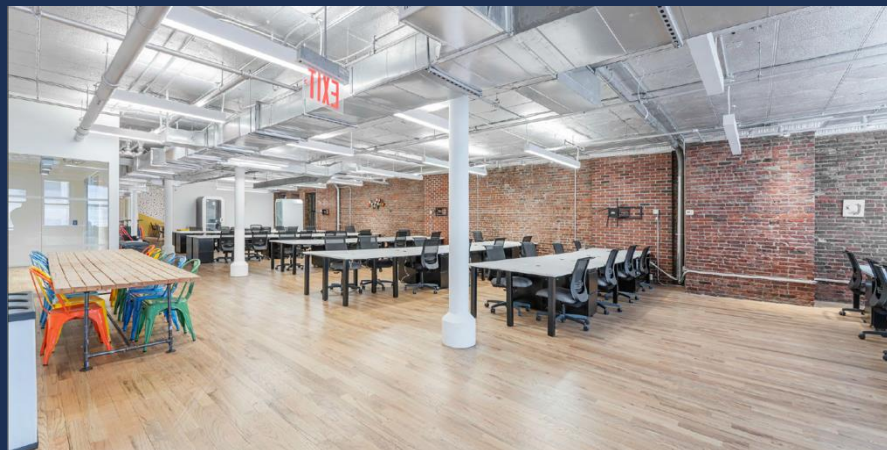
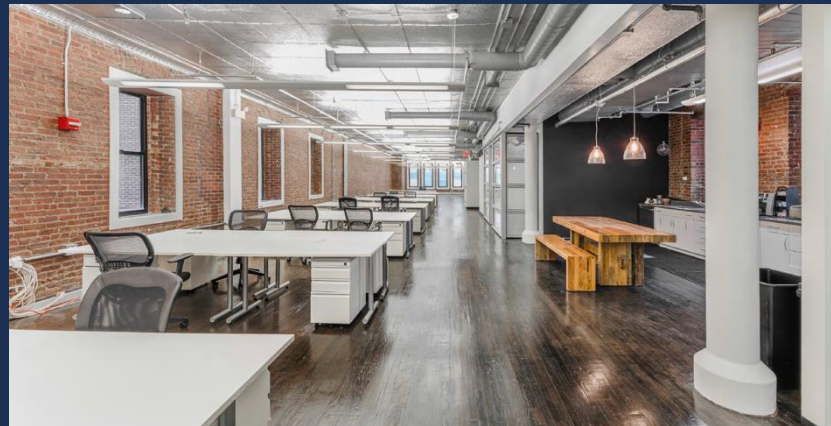
Built & Furnished

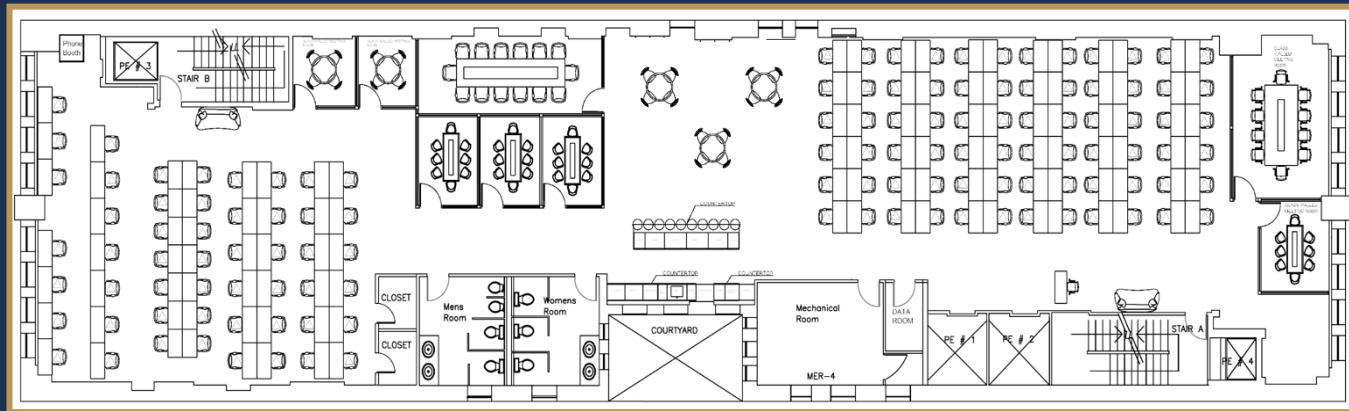
12,000 RSF

OPPORTUNITY HIGHLIGHTS

- 60,000 RSF full building opportunity
- Beautifully built move-in ready and furnished floors
- Renovations to the pantries and bathrooms underway
- Extraordinary ceiling heights ranging from 11'-14'
- Brand new modern lobby
- Potential signage opportunities

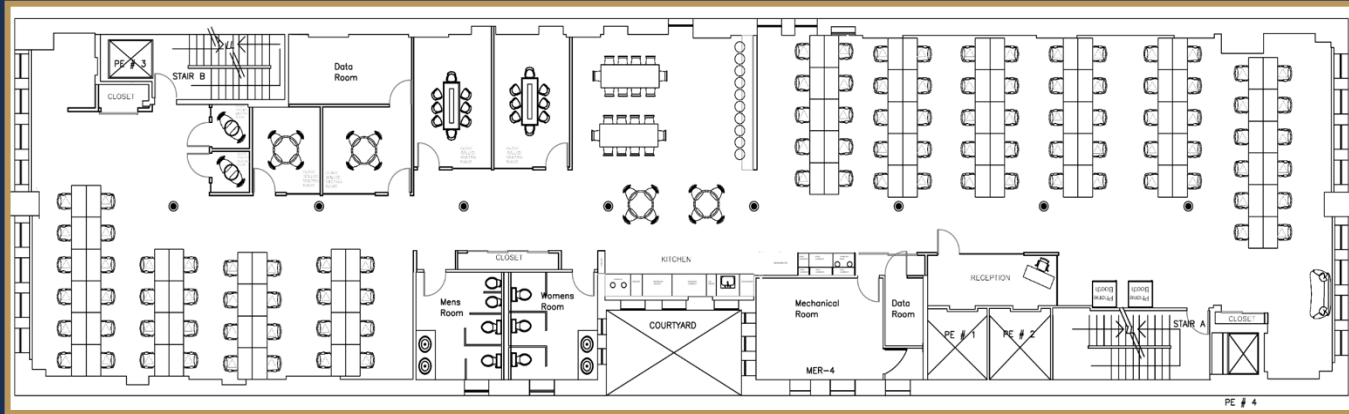






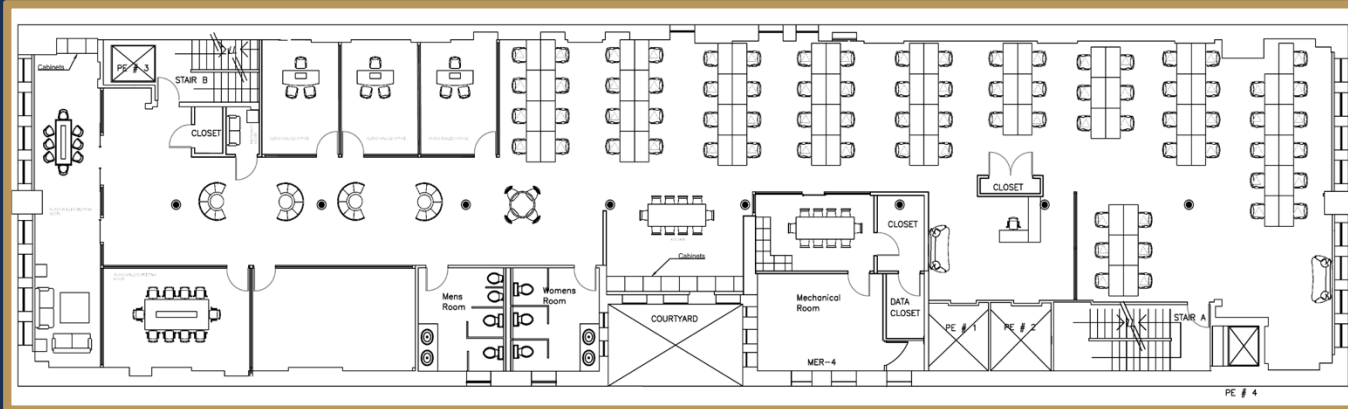
FLOOR LAYOUT

- 122 Workstations
- 5 Conference Rooms
- 2 Meeting Rooms
- 1 Phone Room
- 1 Large Collaborative Pantry



FLOOR LAYOUT

- 98 Workstations
- 2 Conference Rooms
- 2 Meeting Rooms
- 4 Phone Rooms
- 1 Large Collaborative Pantry



FLOOR LAYOUT

77 Workstations

3 Offices

1 Large Conference Room /
Boardroom

3 Conference Rooms

1 Large Collaborative Pantry

AREA MAP



TRANSIT

- N R W 23rd St 2 min walk
- F M 23rd St 4 min walk
- 1 18th St 2 min walk
- 4 5 6 L N Q R W 14th St–Union Sq 8 min walk

DINING

- | | | |
|---------------------|---------------------------|-------------------|
| Eataly NYC Flatiron | Portale | Casa Mono |
| Shake Shack | Shiraz Kitchen & Wine Bar | Union Square Cafe |
| ABC Kitchen | Casa Carmen | Cafe Zaffri |
| Upland | Barbounia | Maman |
| Boqueria | Taralucci e Vino | Dough Donuts |
| Oiji Mi | Rosa Mexicano | Gotham Coffee |
| Kyma | Mission Ceviche | :3 Coffee |
| Ilili | Pasta Eater | Blue Dove Coffee |
| Thai Villa | Chopt Creative | Devocion |
| Scarpetta | Da Andrea | Seven Grams Caffè |
| Little Maven | | Luckin Coffee |

LANDMARKS

- Whole Foods Market
- Flatiron Building
- Madison Square Park
- Union Square Park