

10 FIFTH AVENUE

FLATIRON
CORNER
RETAIL
OPPORTUNITY

NEW YORK CITY

FIFTH AVENUE AT WEST 16TH STREET

110 FIFTH AVENUE



Discover an unparalleled retail opportunity in the heart of the Flatiron District, with a premier corner location and commanding ground-floor presence. Boasting expansive wraparound frontage, this space offers exceptional visibility to capture the attention of one of Manhattan's most dynamic shopping corridors. Join an impressive roster of co-tenants including lululemon athletica, Vuori, Zara, Nespresso, Aritzia, On Running and Reformation—an ideal environment for brands looking to thrive alongside today's top retailers.

SPACE DETAILS

APPROXIMATE SIZE

GROUND FLOOR 10,300 SF
 BASEMENT 2,500 SF

FRONTAGE

200 FT OF WRAPAROUND

CEILING HEIGHT

GROUND FLOOR 15 FT

TERM

LONG TERM

SITE STATUS

CURRENTLY CAMP

POSSESSION

FEBRUARY 2027



COMMENTS


UNPARALLELED FLATIRON CORNER OPPORTUNITY

LARGE GROUND FLOOR PRESENCE WITH EXPANSIVE WRAPAROUND FRONTAGE AND VISIBILITY

DIRECTLY ACROSS FROM NESPRESSO'S NEW DOWNTOWN FLAGSHIP LOCATION AND FREE PEOPLE'S NEWEST NYC LOCATION

NEIGHBORS

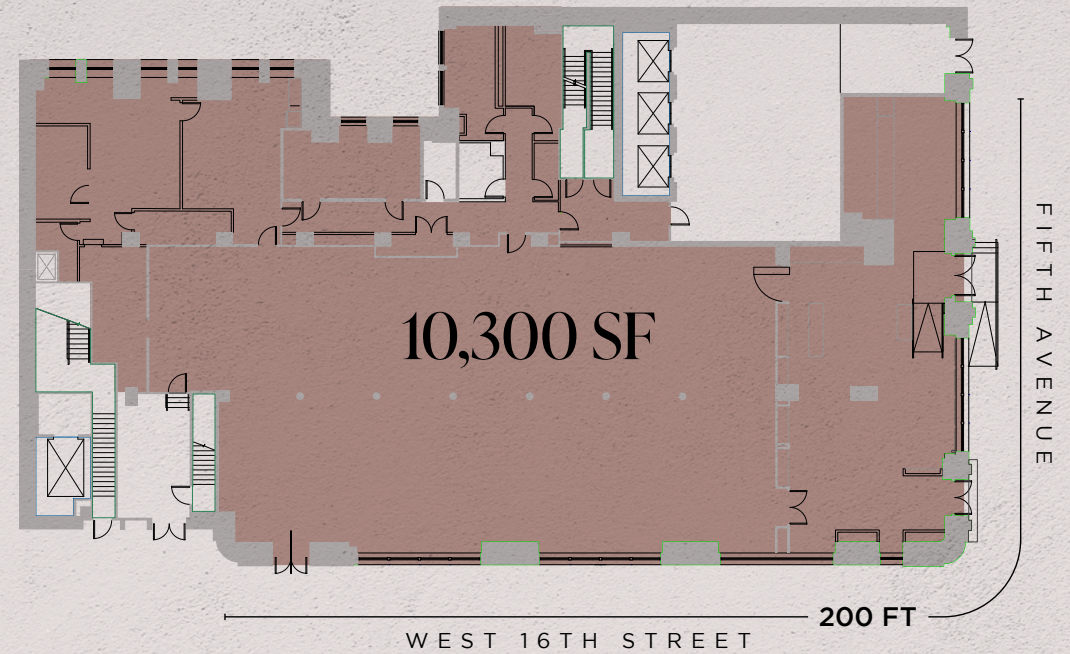
lululemon   Reformation NESPRESSO

WARBY PARKER VUORI  GANNI

 ATHLETA ARITZIA FREE PEOPLE PACSUN

HOKA SEPHORA COLE HAAN ZARA

GROUND FLOOR



BASEMENT

