

# 114

AVENUE OF THE  
AMERICAS

ULTRA HIGH-END SUBLEASE

**PARTIAL 21ST FLOOR**  
**15,000-20,000 RSF**



## PARTIAL 21<sup>ST</sup> FLOOR

# 15,000-20,000 RSF

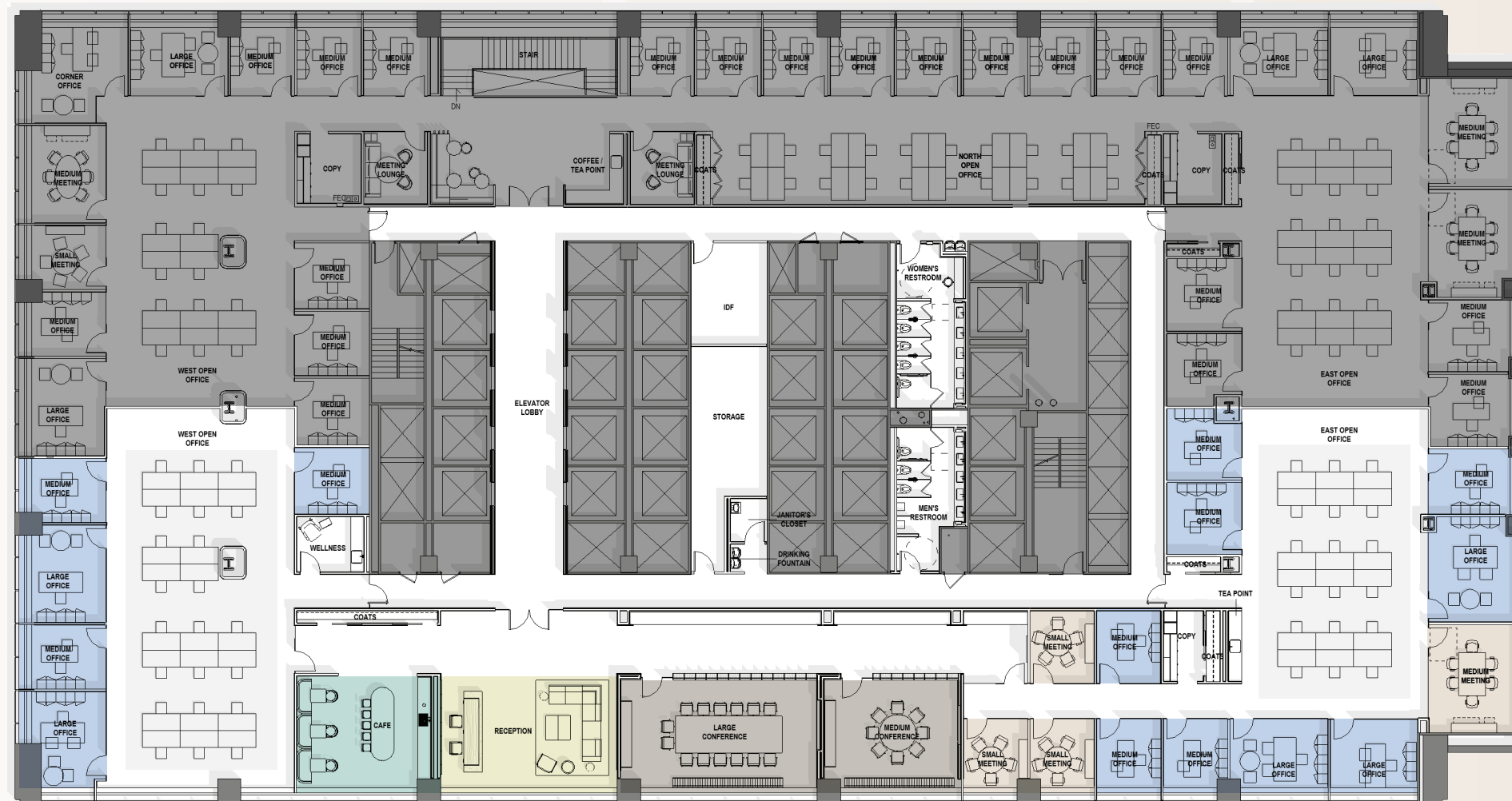
43rd STREET

**Possession:** ~Q2 2025

**Term:** 3-5 years

- Brand new ultra high-end buildout
- Prime southern portion of the floor
- Space will be delivered fully furnished
- Prime location with excellent transportation access
- Spectacular views of Bryant Park

AVENUE OF THE AMERICAS



OFFICES	14
WORKSTATIONS	40
MEETING	4
CONFERENCE	2
CAFÉ	1
RECEPTION	1

42nd STREET



Photos of 20th Floor space  
The 21st Floor will have substantially similar finishes



Actual View

