

GRAND  
CENTRAL  
TOWER

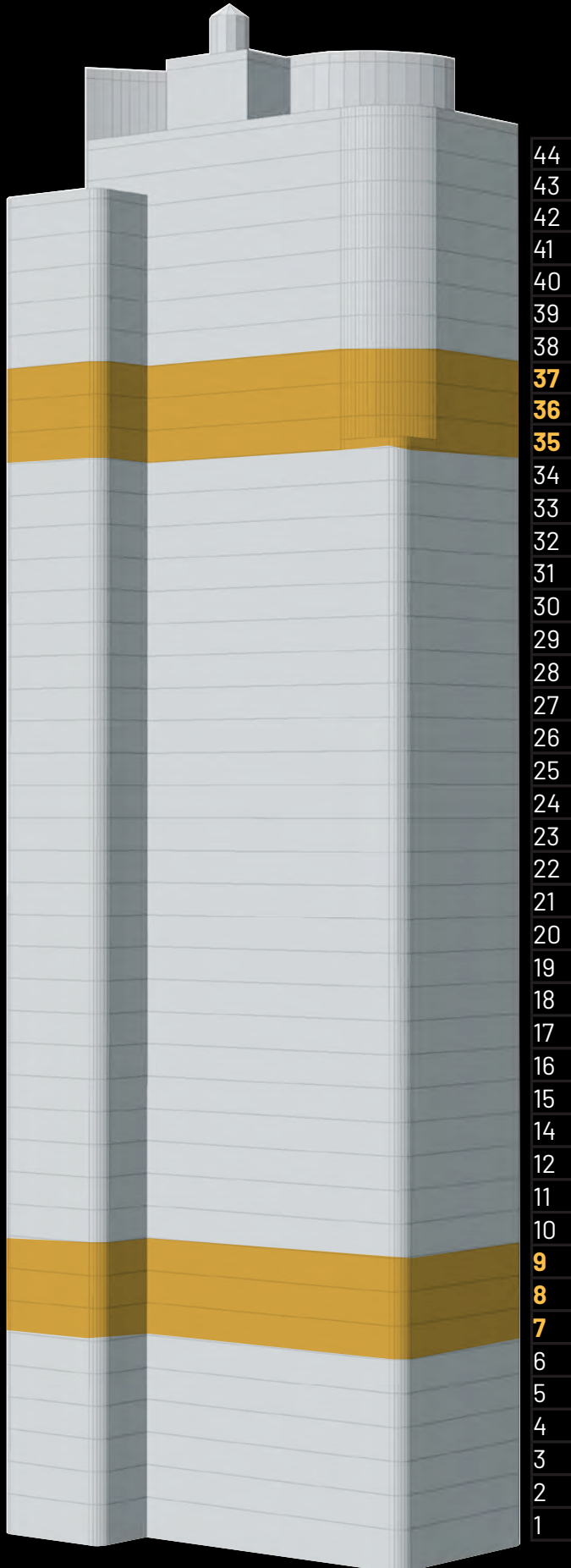
# *large blocks*

Floors 7-9 | Floors 35-37

50K RSF Blocks



# *available blocks*



---

*entire 7th-9th floors  
48,150 RSF total*

ENTIRE 9TH 16,050 RSF

ENTIRE 8TH 16,050 RSF

ENTIRE 7TH 16,050 RSF

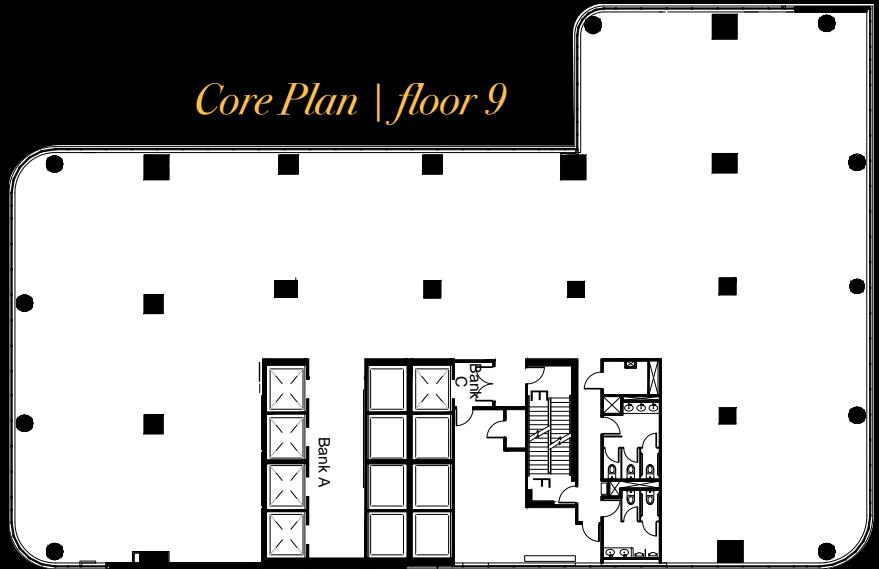
Available 3Q 2026.

# block 7-9

ENTIRE 9TH 16,050 RSF  
ENTIRE 8TH 16,050 RSF  
ENTIRE 7TH 16,050 RSF  
*48,150 RSF total*

- Available 3Q 2026.
- State-of-the-art amenity spaces.
- Excellent location.

*Core Plan | floor 9*



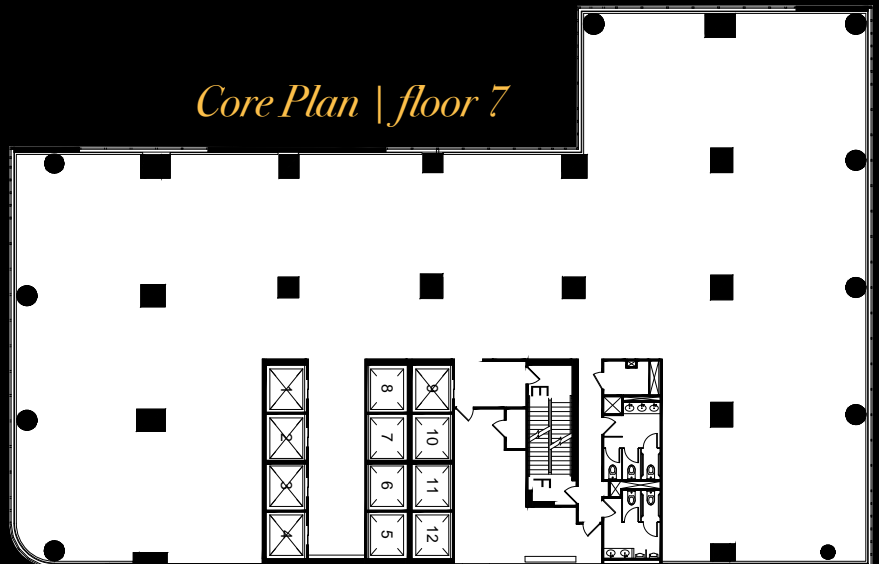
East 45th Street

*Core Plan | floor 8*



East 45th Street

*Core Plan | floor 7*



East 45th Street



*sample finishes*



# *elevated entrance*

New lobby and New Elevators  
Lobby and elevators to be renovated.



# *superb amenities*

18th Floor amenity features tenant lounge space, conference rooms, pantry and showers. Additional state-of-the-art amenities planned.





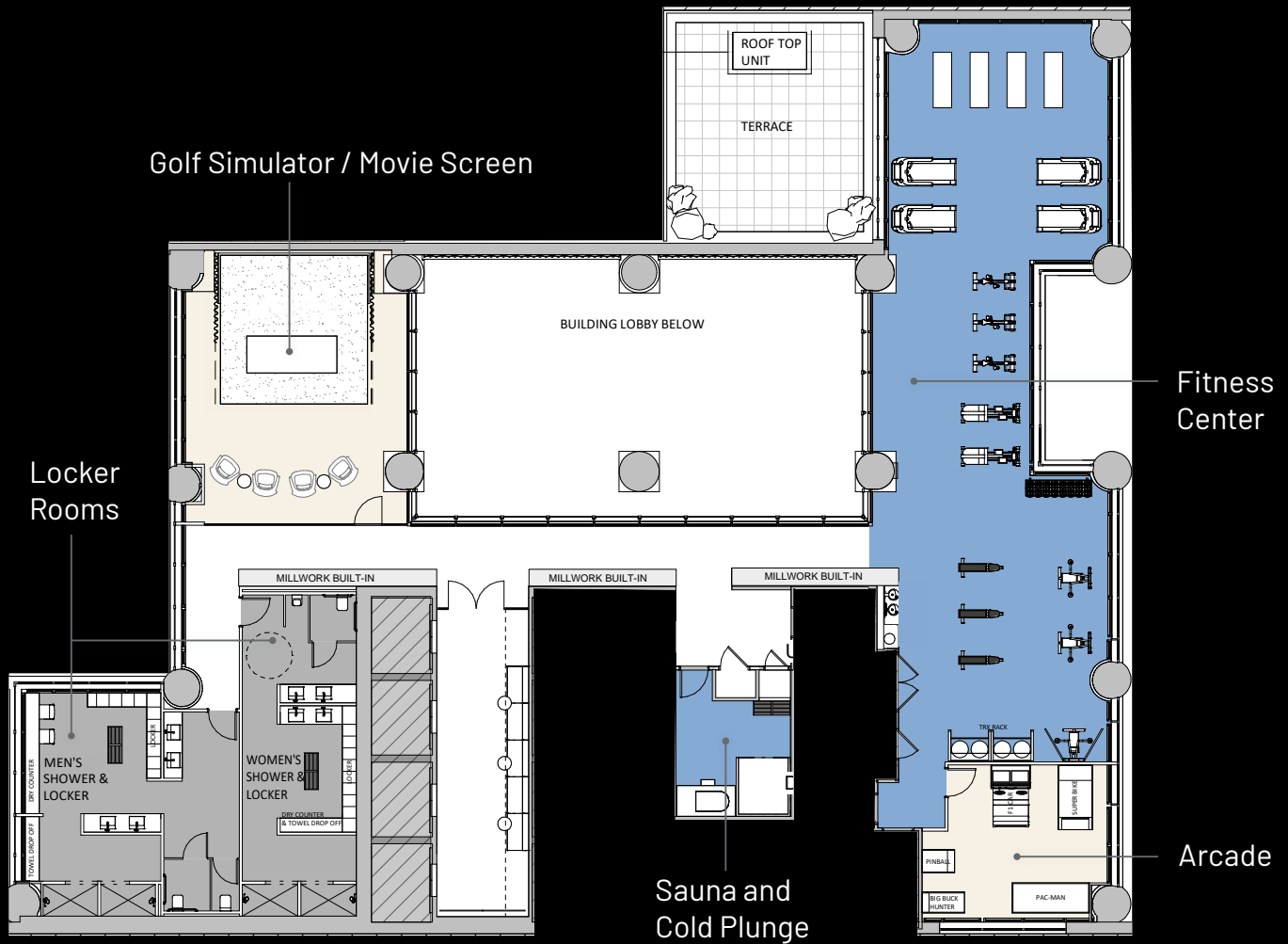
*amenity space*  
18TH FLOOR



# *future amenities*

Additional state-of-the-art amenities planned.





*planned amenities*  
2ND FLOOR



# supreme commutes

Steps from the Grand Central transit hub, tenants can quickly access all parts of the city.