



# For Sublease

- 16,820 RSF
- Built, furnished plug-n-play sublease
- Full floor presence
- +/-90 workstations, 12 offices/small meeting rooms, 4 phone rooms, one 24-person conference room w/ partition to create two conference rooms (one 8-person & one 16-person), reception, lounge, and pantry
- Available immediately
- **Term thru November 30, 2025**
- Rent upon request
- Fiber optic and telecommunications available
- 24/7 access

**151 West 26<sup>th</sup> Street**

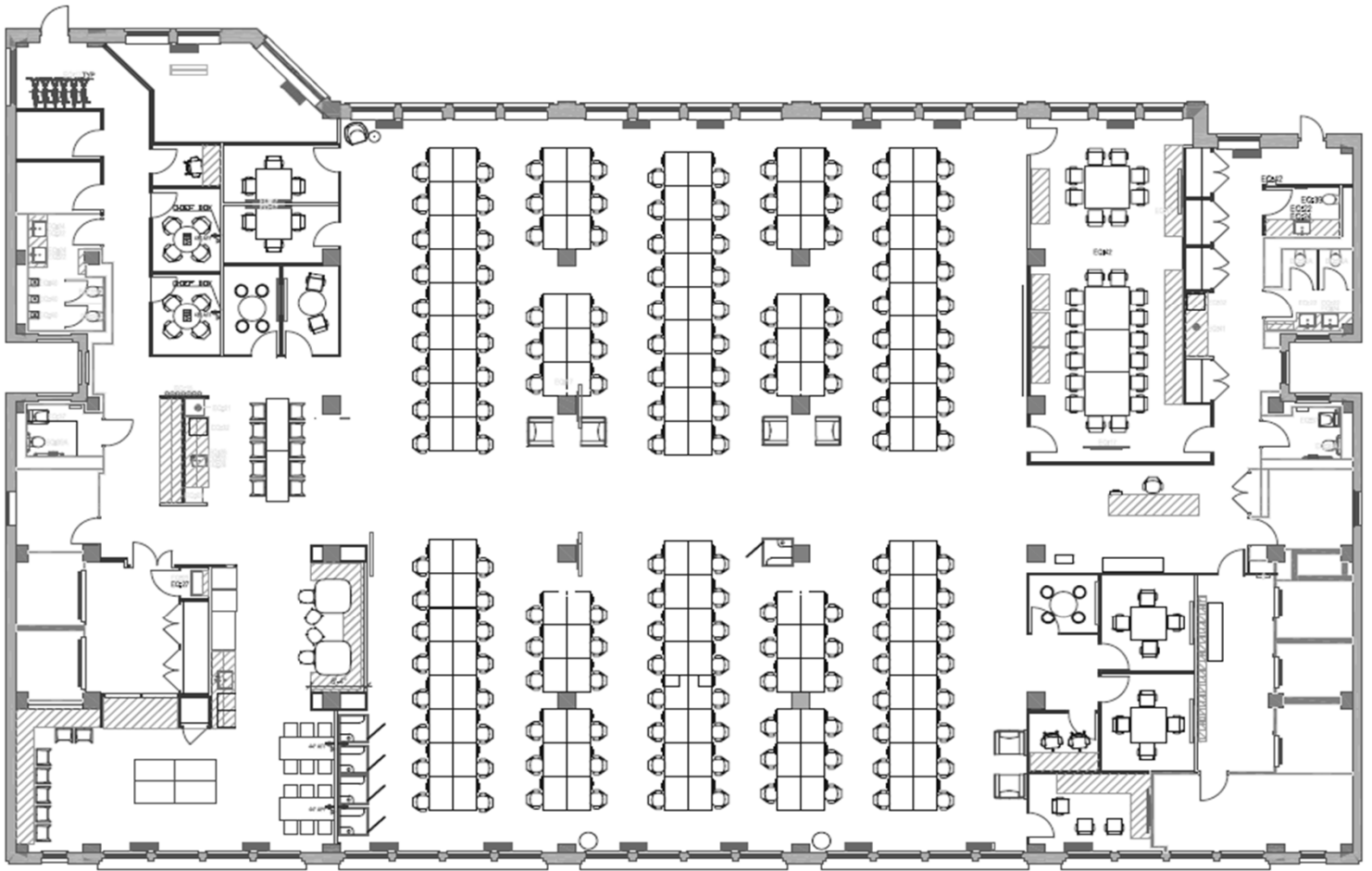
*Between Sixth & Seventh Avenues*

*9<sup>th</sup> Floor*

---

# For Sublease

151 West 26<sup>th</sup> Street | 9<sup>th</sup> Floor Plan | 16,820 RSF

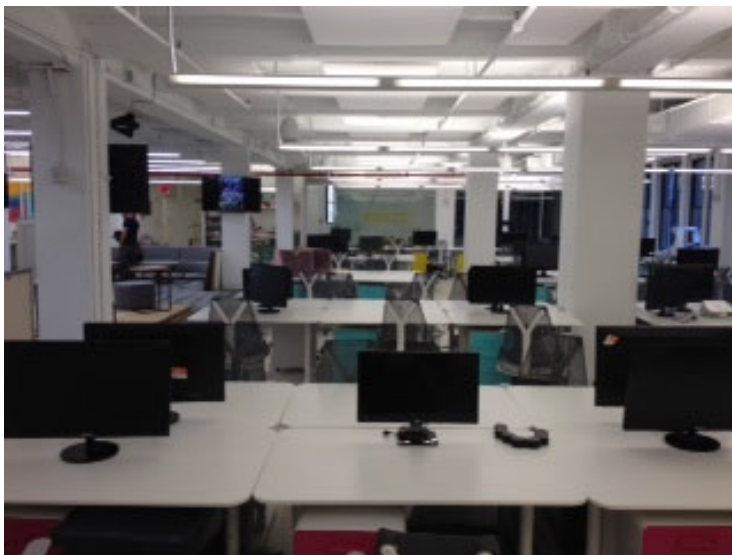
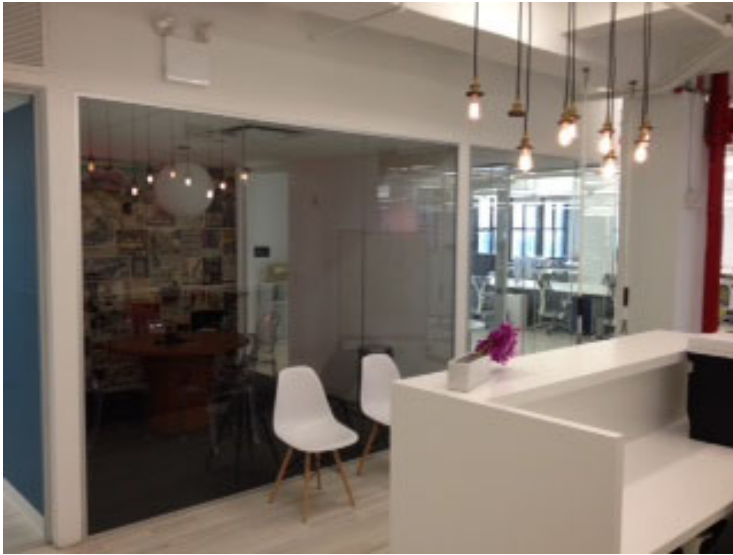


- Built, furnished plug-n-play sublease
- 150 workstations
- 12 offices/small meeting rooms
- 4 phone rooms
- One 24-person conference room with partition to create two conference rooms (one 8-person & one 16-person)
- 1 lounge
- 1 pantry
- 1 reception area



# For Sublease

151 West 26<sup>th</sup> Street | 9<sup>th</sup> Floor



# For Sublease

## 151 West 26<sup>th</sup> Street | 9<sup>th</sup> Floor

### RESTAURANTS

1. Barcade
2. Hanjan
3. Smithfield Hall NYC
4. L'Amico
5. The Ainsworth
6. The Smith
7. Trattoria Italiana
8. Flatiron Hall & Beer Garden
9. Cote Korean Steakhouse
10. Momoya

### GRAB-N-GO

1. Panera
2. Whole Foods
3. Brooklyn Bagel & Coffee Co.
4. Eatly
5. Olympia Deli & Juice
6. by Chloe
7. Bombay Sandwich Co.
8. Chipotle
9. Inday
10. Pret
11. Johnny's Luncheonette
12. Murrays
13. Doughnut Plant
14. Bean & Bean
15. Brooklyn Roasting Company

### HOTELS

1. NoMad
2. Kimpton Eventi
3. Ace Hotel
4. Cambria Hotel - Chelsea
5. INNSIDE New York NoMad
6. Courtyard Marriott NY Chelsea
7. Chelsea Savoy Hotel
8. Hotel Henri
9. Hilton New York Fashion District
10. Hyatt House NY/ Chelsea

### FITNESS

1. Crunch
2. AKT Fitness
3. Blink
4. Equinox
5. Rumble Boxing
6. Soul Cycle NoMad
7. Orangetheory Fitness
8. Barry's Chelsea

