

Tower 40

For lease

Plug and Play Sublease Space Available

10 East 40th Street

17,755 RSF

Space/Area: Entire 19th Floor

Asking Rent: Upon Request

Possession: Arranged

Term: September 29, 2029

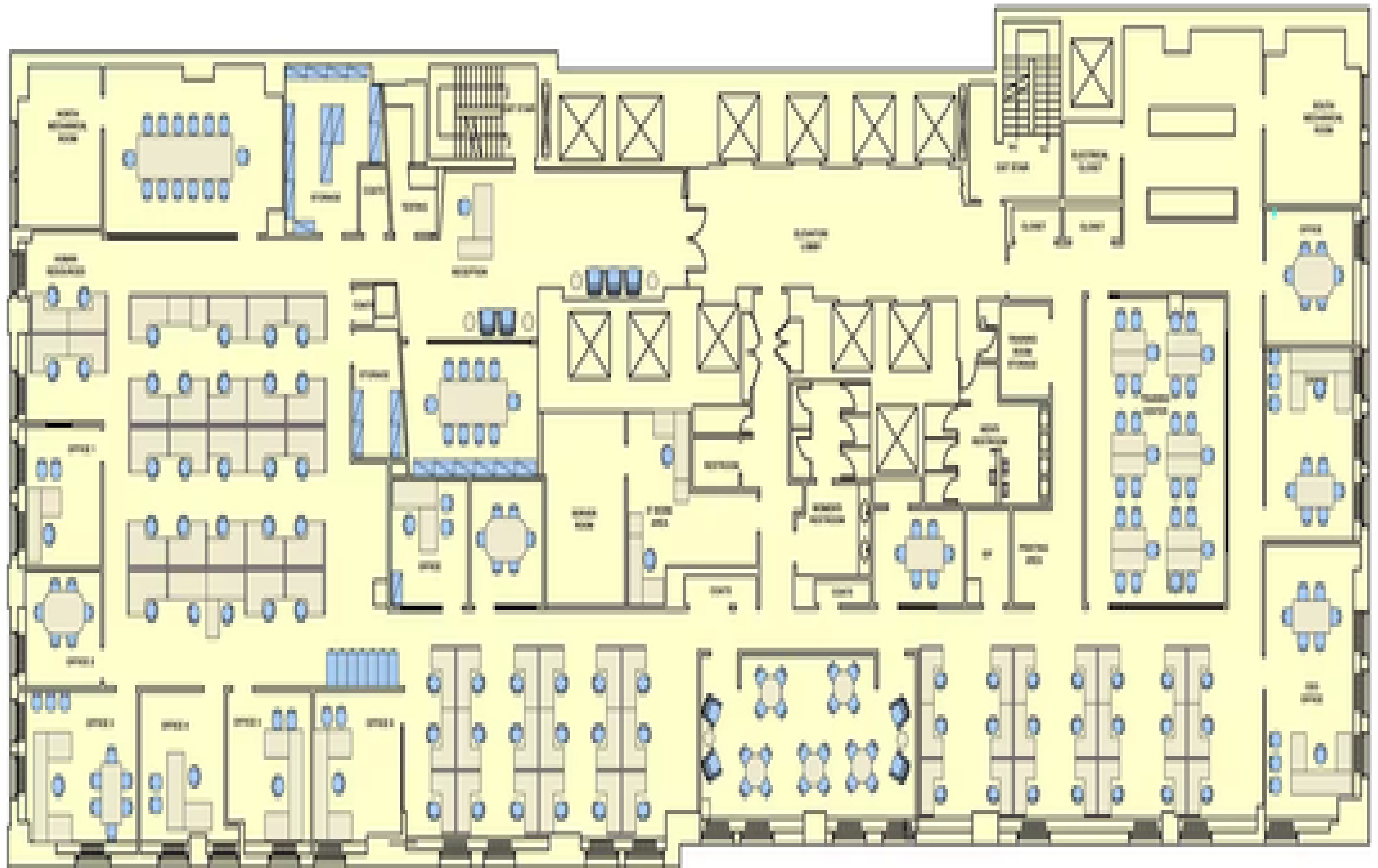
Space Features:

- Fully built and furnished
- High-end finishes
- Space features 10 offices, 4 conference rooms, 1 training center, open area for about 63 workstations, lounge/collaboration area, and reception area.

Building Features:

- Newly renovated lobby
- Short walk to: Bryant Park, Grand Central, and a 10 minute walk to Penn Station.
- Close to the 7, B, D, F, M, S, 4, 5 and 6 subways





0 10' 20' 30' 40' 50'