



345

SEVENTH

FLOOR PLANS

EMPOWER
WHAT'S NEXT AT

345

SEVENTH

Discover the ideal blend of modern office space and prime location at 345 Seventh Avenue — This professionally managed building offers versatile spaces suited for a wide range of businesses, with modern upgrades and thoughtful amenities designed to support productivity, creativity, and growth every day.



345

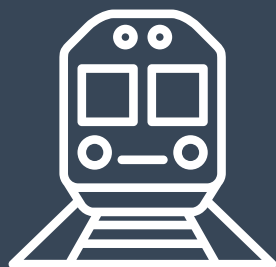
SEVENTH

AT THE CENTER OF IT ALL.

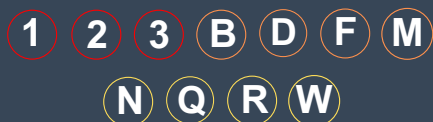
Strategically located just two blocks from Penn Station in the heart of Chelsea, 345 Seventh Avenue offers a premier business address with unmatched accessibility. The building features 24/7 access, flexible floor plans, and abundant natural light—ideal for today’s dynamic workforce. With modern infrastructure and professional management, it’s a workplace designed to support performance, productivity, and long-term growth.



ACCESS



PUBLIC TRANSIT



Path

Penn Station



NATURAL LIGHT



PRIME LOCATION

Chelsea



THE VIEW
345
SEVENTH

AVAILABLE SPACE

<u>FLOOR</u>	<u>SQUARE FEET</u>
THIRDFLOOR	
SUITE 403	2,378 SF
SUITE 502	2,330 SF
6TH FLOOR	9,166 SF
SUITE 804	2,366 SF
SUITE 802	2,600 SF
SUITE 1803	2,400 SF
DUPLEX - FLOOR 23 & 24	13,128 SF
TWENTY-FIFTH FLOOR	3,840 SF

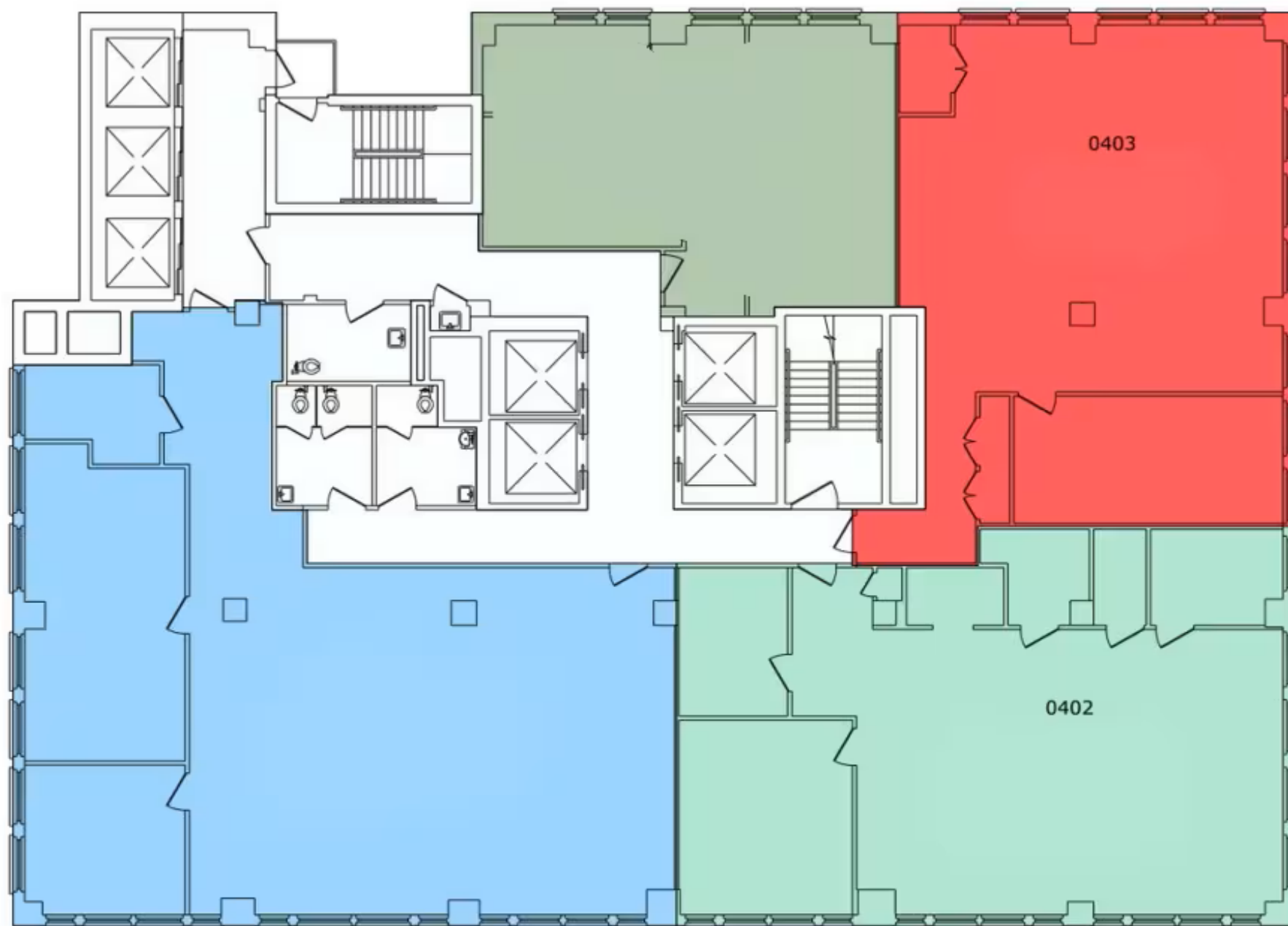
345

SEVENTH

FOURTH FLOOR

SUITE 402
2,378 SF

SUITE 403
2,060 SF

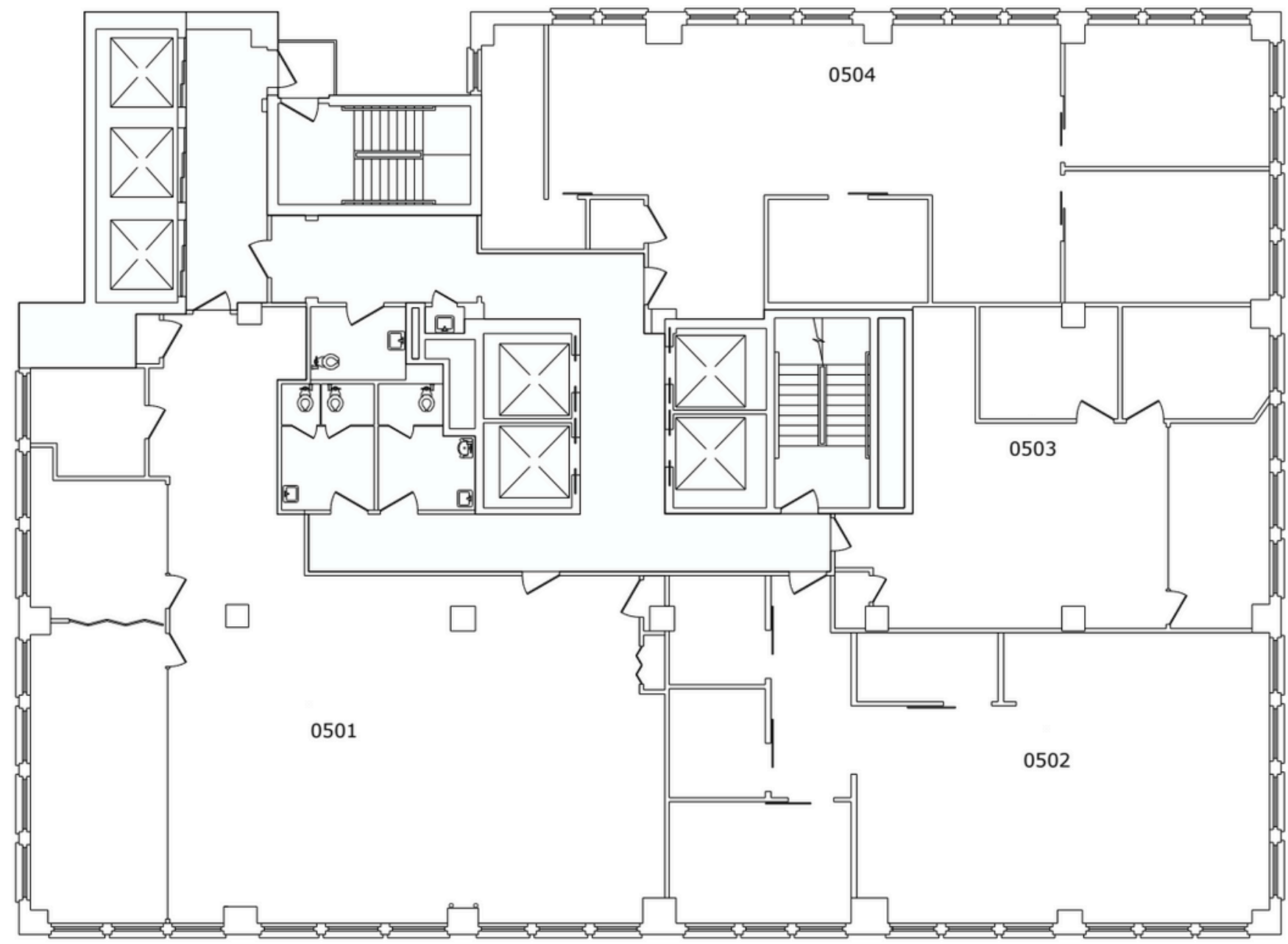


345

SEVENTH

FIFTH FLOOR - SUITE 502

2,330 SF



WET PANTRY | 2 OFFICES | 2 STORAGE CLOSETS |
OPEN SPACE | WINDOWS ON 2 SIDES

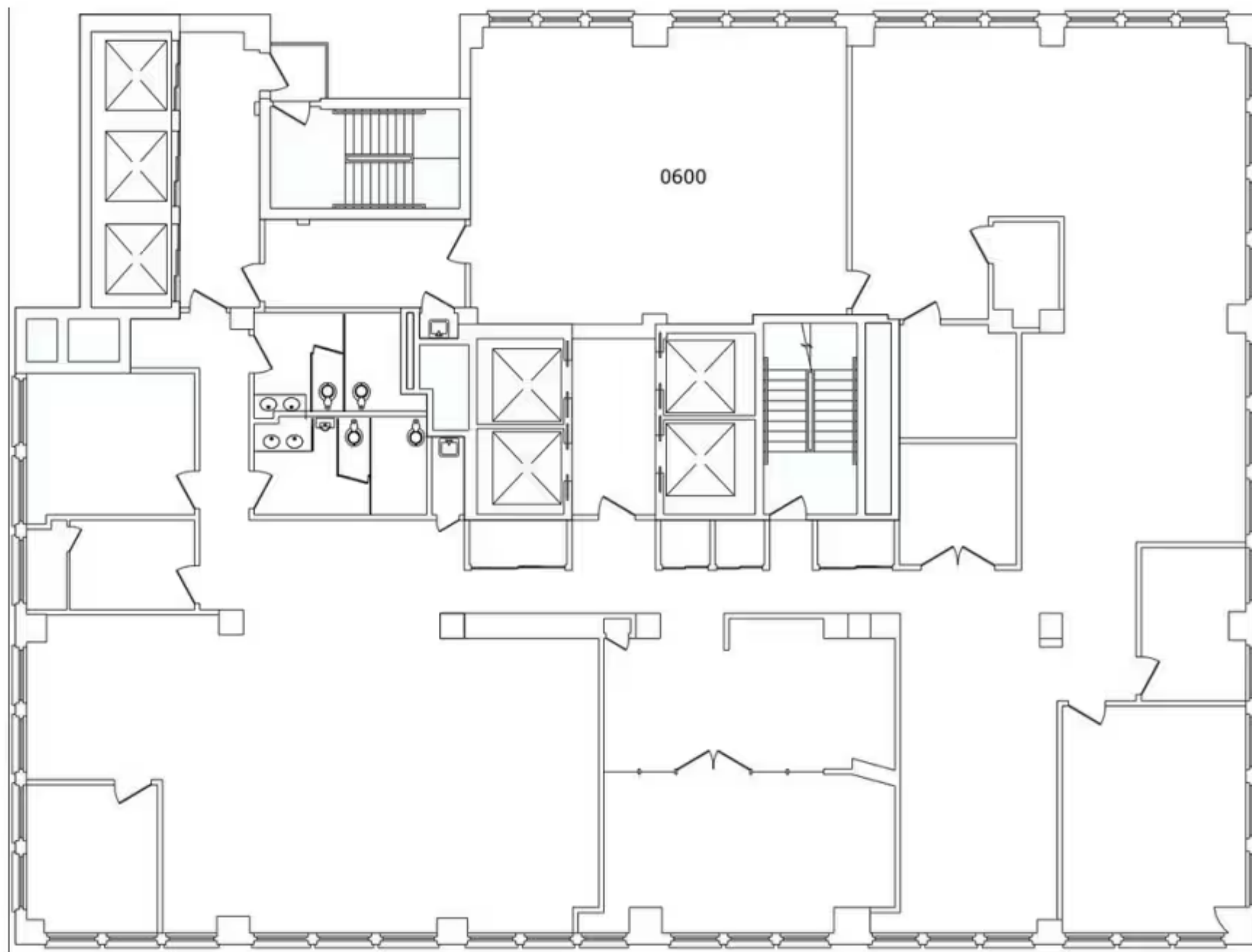


345

SEVENTH

SIXTH FLOOR - CO-WORK

10 - 9,166 SF



WET PANTRY | 2 OFFICES | 2 STORAGE CLOSETS |
OPEN SPACE | NATURAL LIGHT | FURNISHED

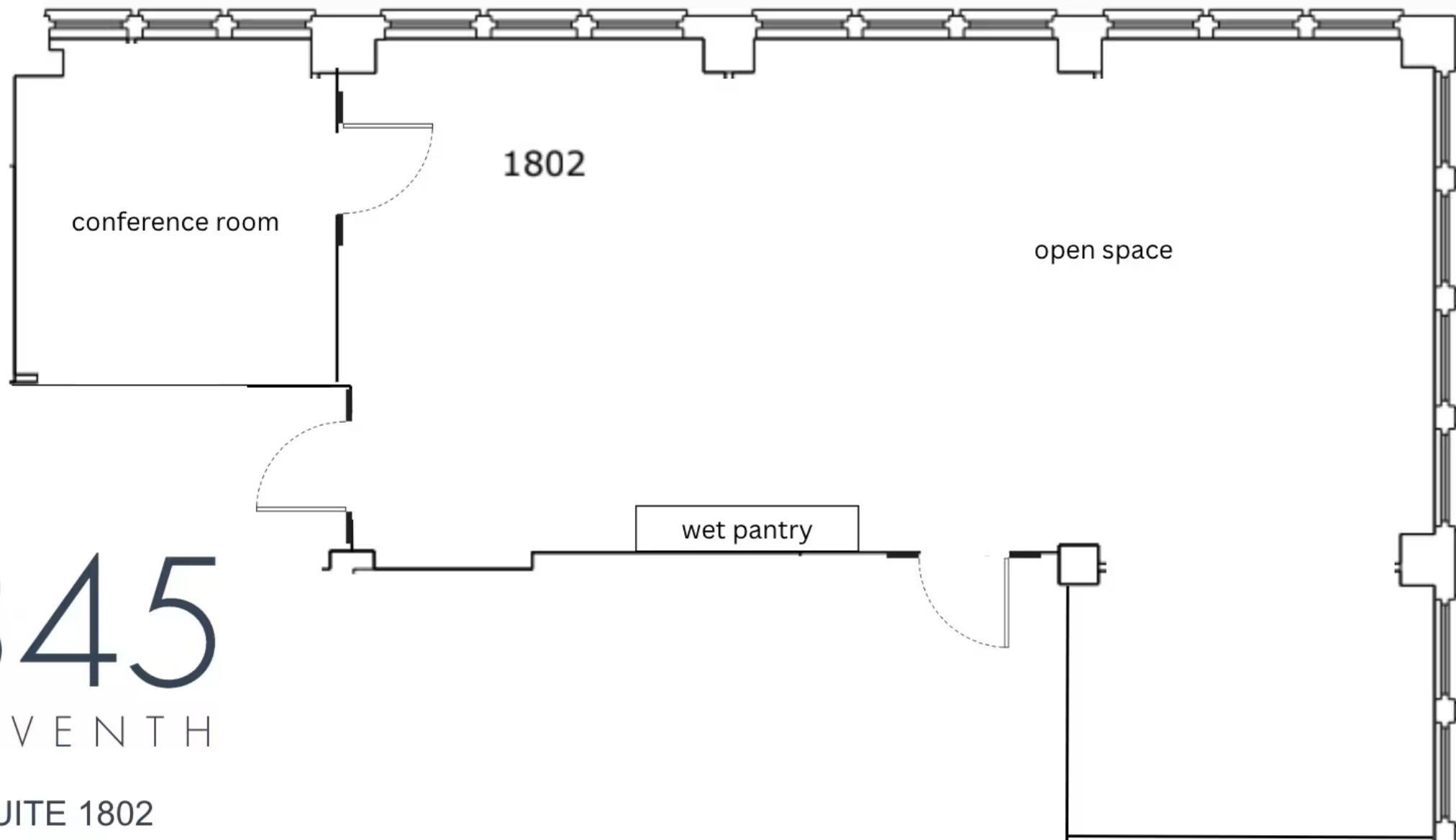




345

SEVENTH

SUITE 1802
2,391 SF



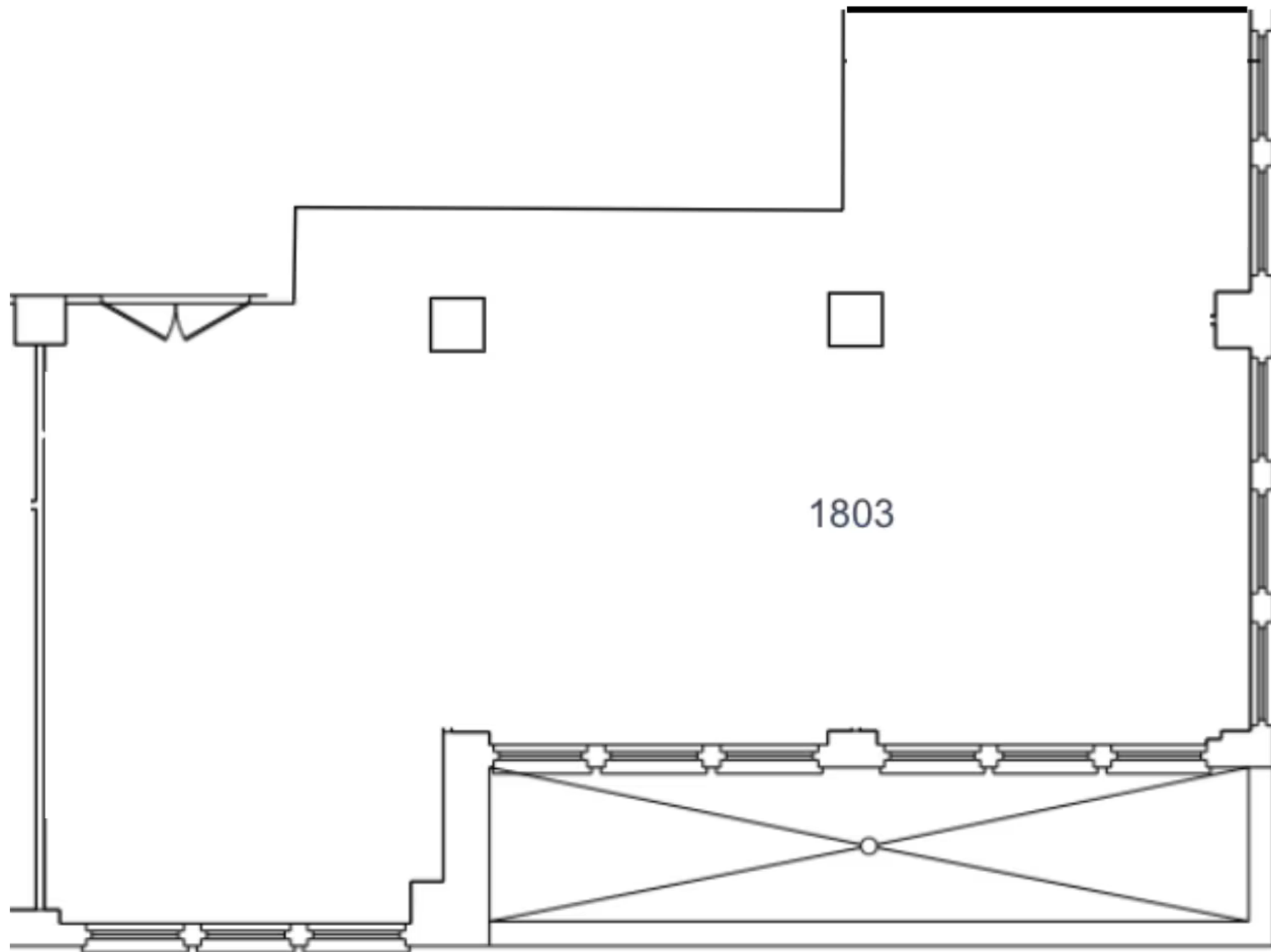






345
SEVENTH

SUITE 1803
2,100 SF



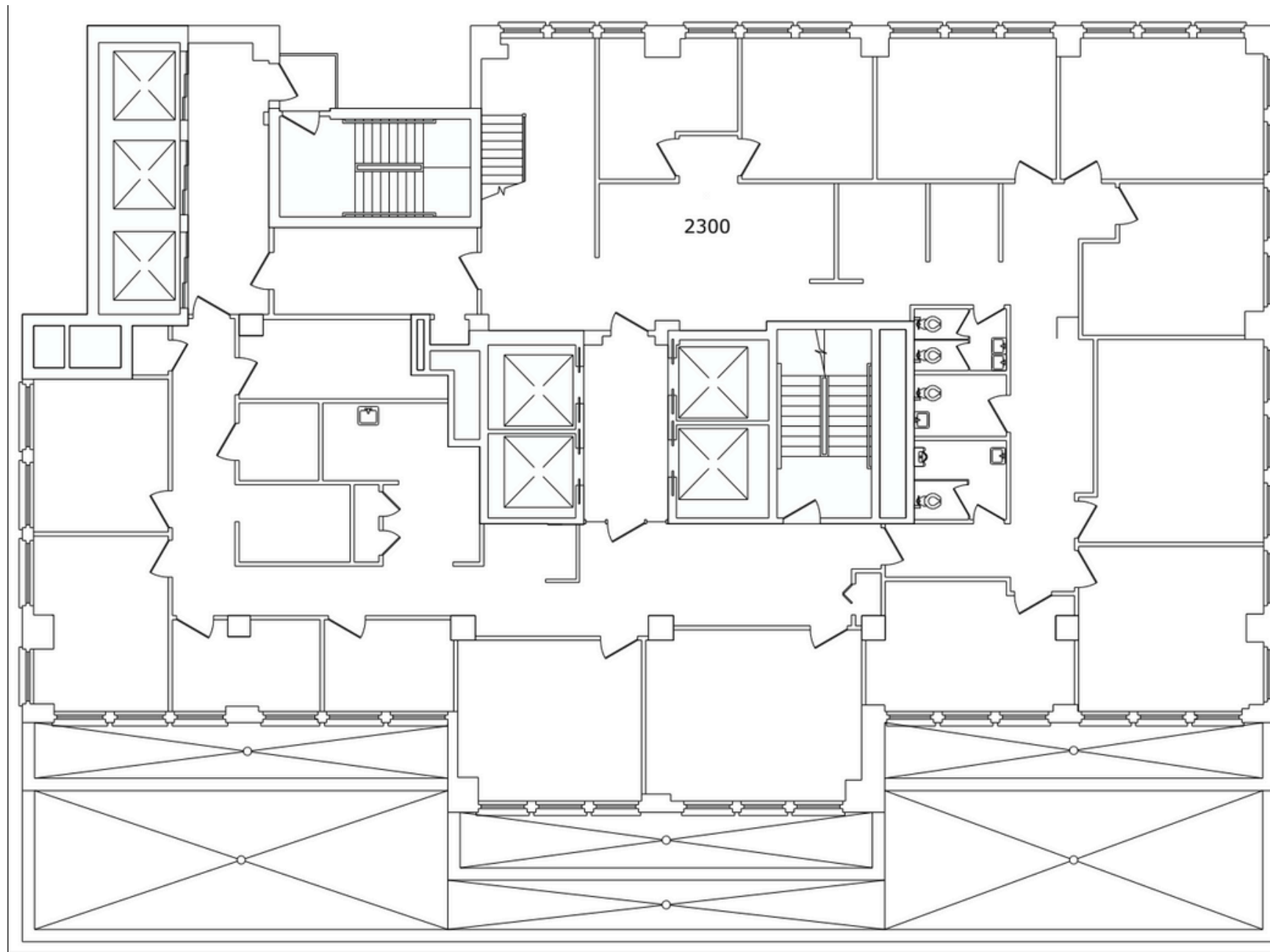


345

SEVENTH

THE DUPLEX - 23 & 34 FLOOR

13,128 SF



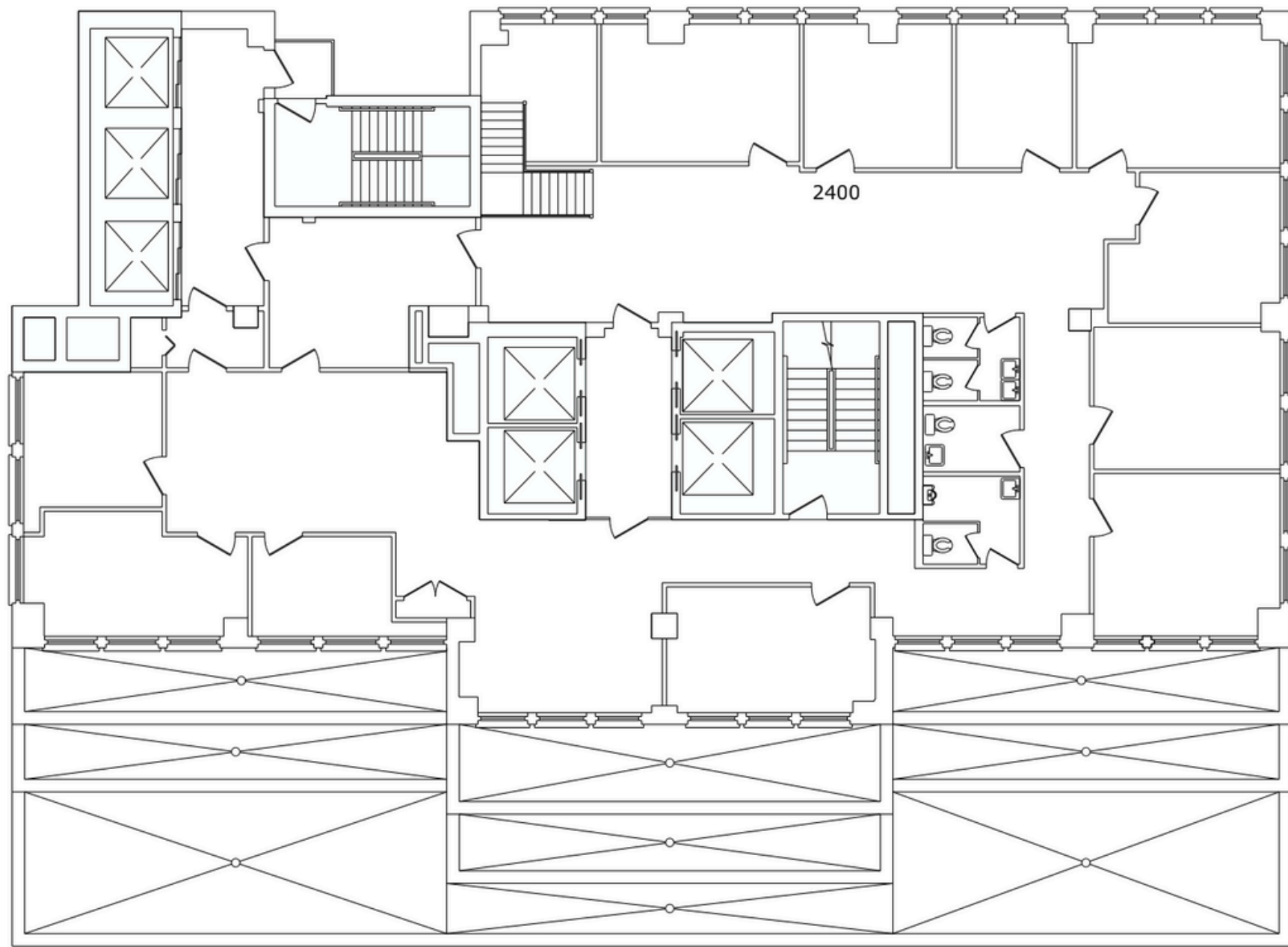
RAW SPACE WITH UNLIMITED POTENTIAL. TAILOR EVERY SQUARE FOOT TO YOUR VISION, BRAND, & BUSINESS.

345

SEVENTH

THE DUPLEX - 23 & 34 FLOOR

13,128 SF



RAW SPACE WITH UNLIMITED POTENTIAL. TAILOR EVERY SQUARE FOOT TO YOUR VISION, BRAND, & BUSINESS.





