



11
sixty two
11

BROADWAY



FLATIRON DISTRICT |



| [VIEW MORE](#)

A NOTION OF EXCELLENCE IN THE HEART OF FLATIRON

1162 Broadway offers a refined workplace experience in the heart of the Flatiron District. A thoughtfully designed lobby by Morris Adjmi sets a strong first impression, complemented by 24/7 access and a seamless tenant app for effortless entry. An on-site gym supports daily wellness, while an upcoming lobby coffee shop adds convenience, creating a balanced environment for modern tenants.

| AVAILABLE SPACES

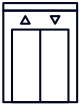
| HIGHLIGHTS



ACCESS



NATURAL LIGHT



ELEVATOR



ATTENDED LOBBY



GYM





OFFICE | CONFERENCE ROOM

DESIGNED FOR DISTINCTION



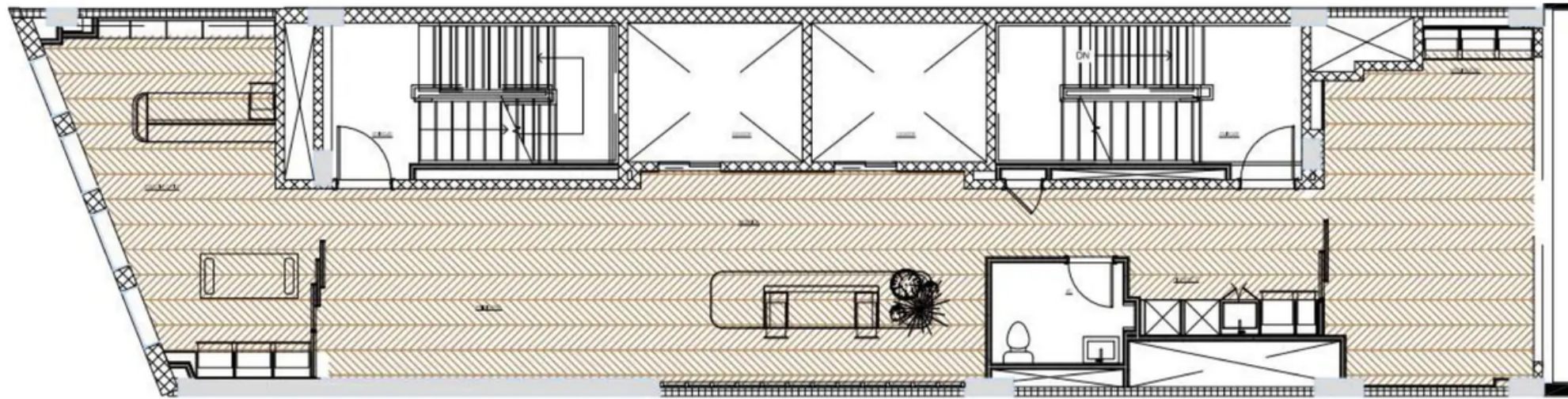
THE GYM

Tenants have access to a 24/7 fitness center equipped with workout equipment and two showers.



FLOOR PLAN

2,200 SF





THE NEIGHBORHOOD

1162 Broadway is ideally positioned in the heart of the Flatiron District, one of Manhattan's most dynamic hubs for fashion, technology, food, and media. The building offers convenient access to the I, F, M, N, Q, R, W, and 6 subway lines, providing seamless connectivity throughout the city. Just steps away, Madison Square Park offers tenants a refreshing escape for a quick stroll, coffee break, or moment of relaxation during the day.

