

232 MADISON

Office for Lease

MIDTOWN SOUTH

2,290 SF

Madison Avenue Sublet

- *Newly Renovated*
- *Furnished or Unfurnished*



Renovated Office Opportunity

232 Madison Avenue

Corner of 37th Street and Madison Avenue

Suite 600

2,290 SF

10-12'
CEILING
HEIGHTS

Recently renovated in 2026, Suite 600 at 232 Madison Avenue offers a bright, modern workspace with three sides of windows and abundant natural light. The layout includes three private offices, conference room, open workspace, waiting area, pantry, and a fully equipped kitchenette. Available furnished or unfurnished, with expansion potential of up to 1,000 sq ft. Centrally located in Midtown Manhattan, the property is within walking distance of Grand Central, Penn Station, and Port Authority, and a short stroll from Bryant Park.

HIGHLIGHTS

- Recently Renovated in 2026
- Fully equipped private kitchenette with new appliances (refrigerator, dishwasher, microwave etc..)
- 3 private offices, conference room, open space, waiting area and pantry
- Independent HVAC unit
- Windows along the entire office perimeter - 3 sides of windows with plenty of natural light
- Dedicated storage closet and coat room
- Prewired with Ethernet cabled and IT area
- Can be delivered furnished or not furnished
- Possibility of expansion into additional adjoining offices for an additional 1,000 sq ft.
- Nearby subway lines: 4, 5, 6, B, D, F, M, N, Q, R, W

ASKING RENT UPON REQUEST



Interior Photos



WAITING AREA



OFFICE

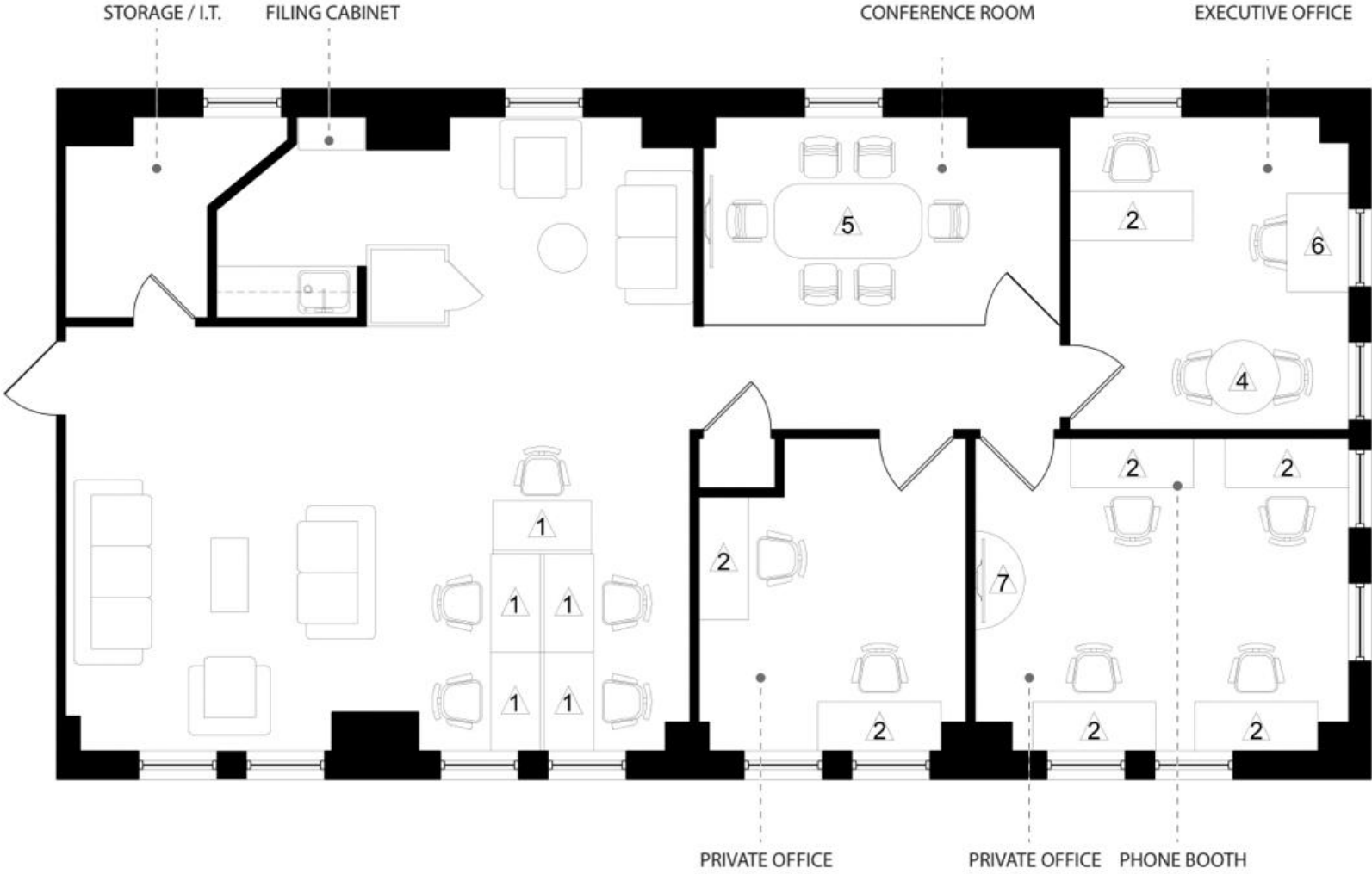


OFFICE

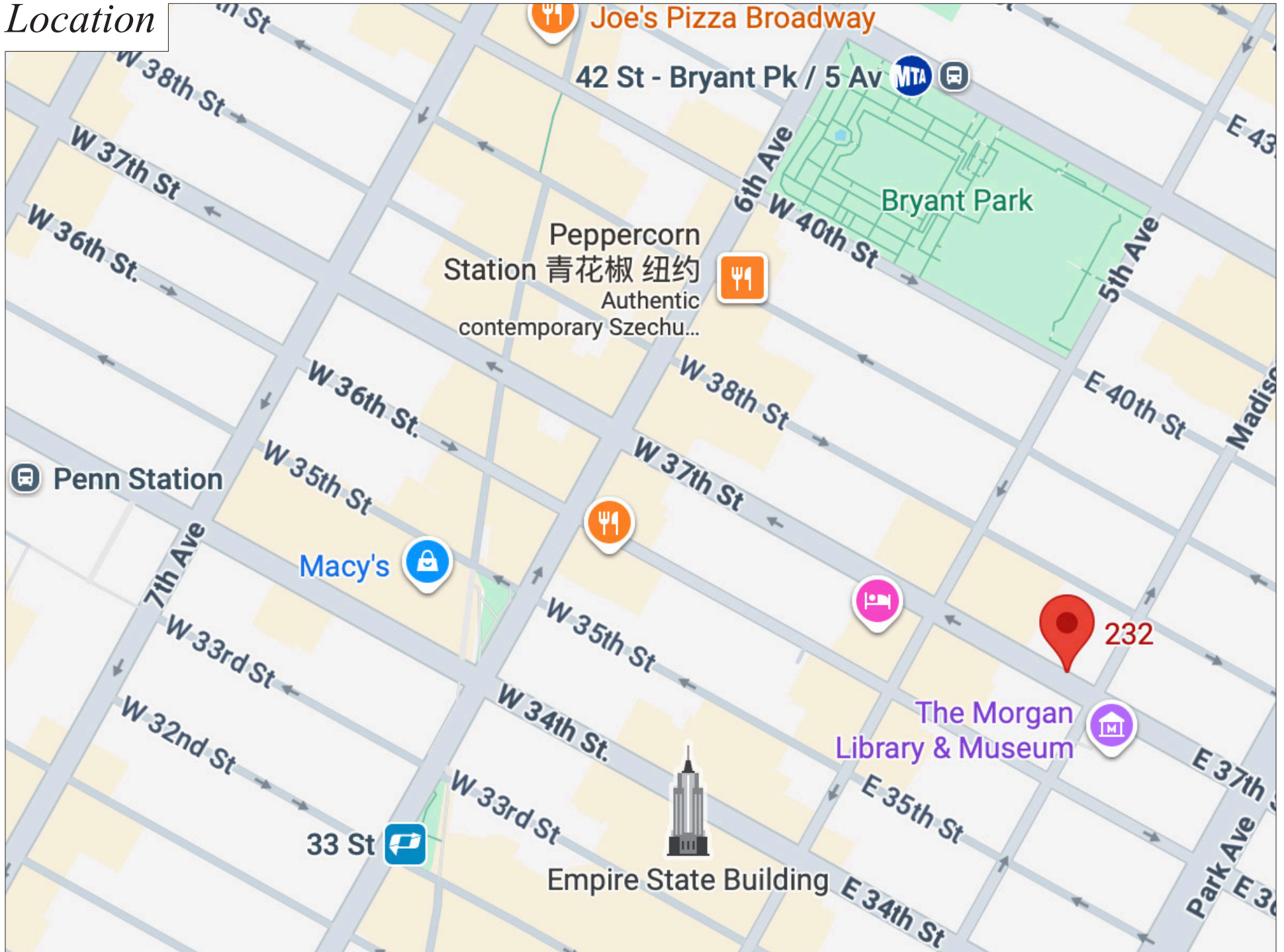


CONFERENCE

Floor Plan



Location





Office Views