

# 140 WEST 36TH STREET 4TH FLOOR

JANUARY 1, 2026

2,300 SF

## HIGHLIGHTS

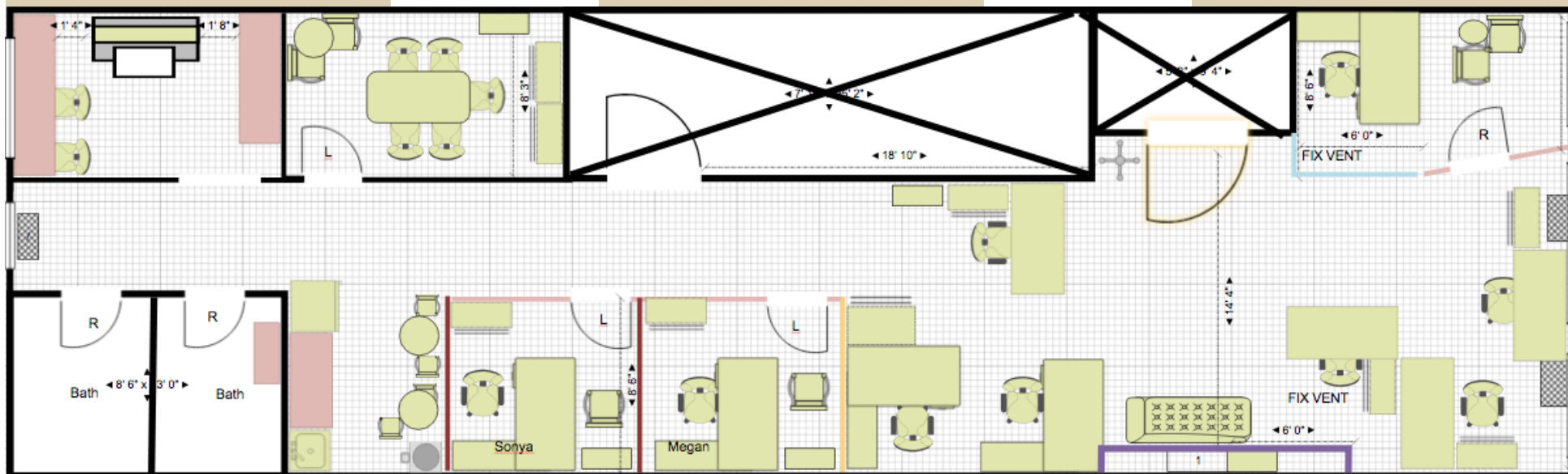
\$37/RSF

- 3 Large Offices
- Large Conference Room
- Bullpen Area
- Wet Pantry
- Large Walk-in Freezer
- High Ceilings
- Tenant controlled Central AC
- 2 Bathrooms
- Centrally located in Midtown Manhattan
- Build to suit

2 BLOCKS  
FROM PENN  
STATION

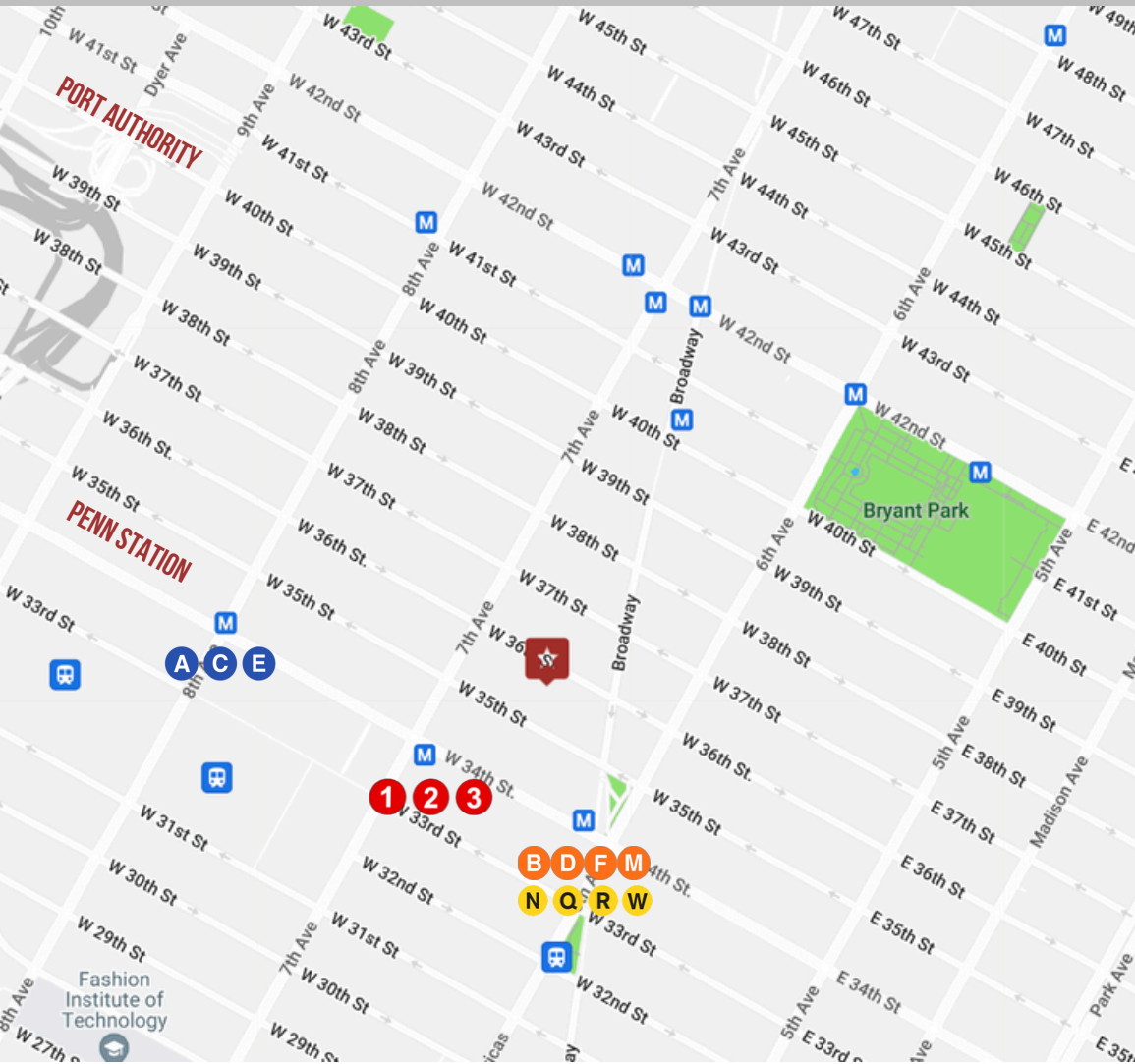
6 BLOCKS FROM  
PORT  
AUTHORITY &  
TIME SQUARE





# OFFICE SPACE FOR LEASE

140 WEST 36TH STREET, NEW YORK, NY 10018



HERALD SQUARE

*.1 Miles Away*

BRYANT PARK

*.3 Miles Away*

PENN STATION

*.7 Miles Away*

SUBWAYS NEARBY

A C E B D F M  
1 2 3 N Q R W